



URBAN VENUE HUB

by cic berlin





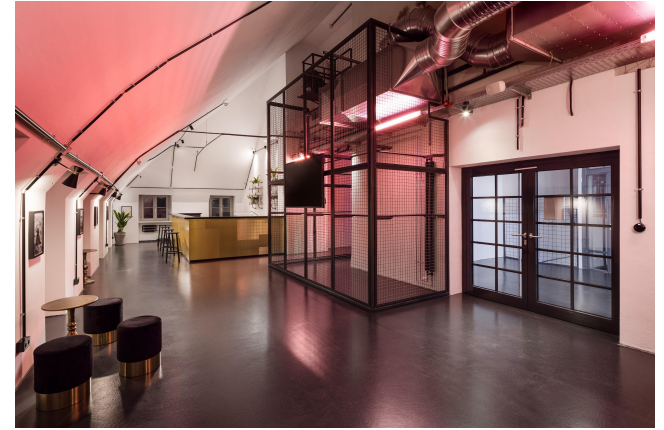
Welcome to CIC Berlin!

Located between the vibrant districts of Alt-Treptow and Kreuzberg, **CIC Berlin** is part of a global innovation network spanning more than 15 cities across three continents. More than just a coworking space, we are a thriving hub for startups, entrepreneurs and creatives.

Beyond coworking and office spaces, we offer unique **event venues** that bring your ideas to life. From hands-on workshops and high-energy hackathons to conferences, panels, or full-on festivals — our Events team has the expertise to turn your vision into an unforgettable experience.



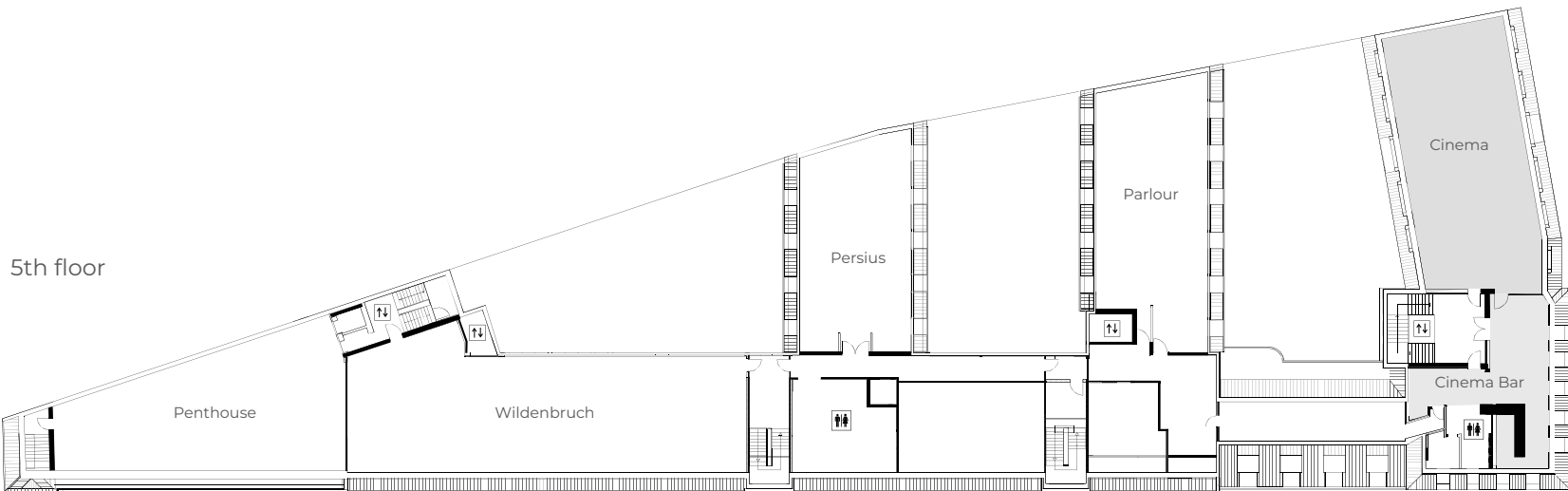
CINEMA & CINEMA BAR



CINEMA & CINEMA BAR

The cinema on the fifth floor offers the perfect setting for panel discussions, keynotes and movie screenings. Equipped with a built-in stage, a projector, a screen and comfy seating, the cinema accommodates up to 98 guests.

The cinema bar adjacent to the theater provides an inviting space for a pre-show reception as well as networking after the event and offers a panoramic view of the Berlin skyline.



CINEMA | 249 m²



Built-in stage - projector - screen 4 x 2,2m -
WiFi - sound system - air conditioning -
daylight

set up  theatre

capacity 98

CINEMA BAR | 104 m²

Bar and bar kitchen - wardrobe - 2 x 65" screens -
WiFi - air conditioning - daylight

set up  standing  banquet

capacity 50 20

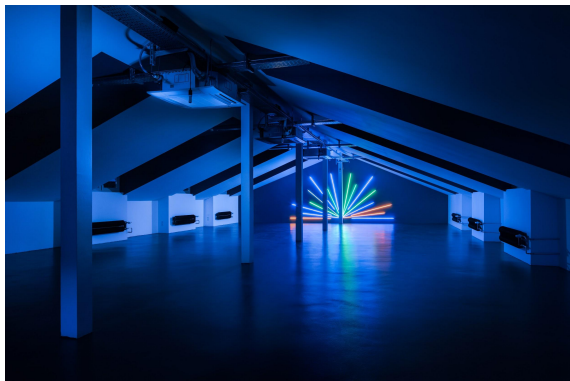
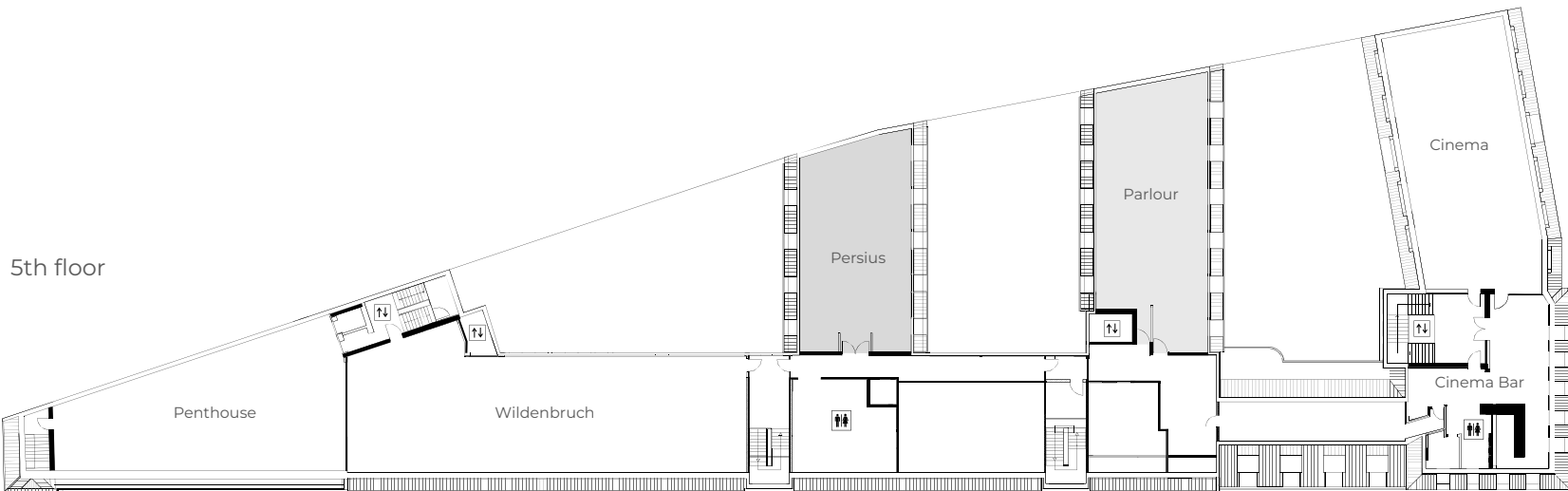


PARLOUR & PERSIUS






PARLOUR & PERSIUS

Parlour and Persius provide a minimalist and focused environment for hosting workshops, brainstorming sessions or team meetings. Both spaces can accommodate 40 participants in workshop seating, allowing interaction, creativity and productivity to flow in a comfortable yet professional setting.



PARLOUR | 214 m²




65" screen - built-in LED installation - WiFi - air conditioning - daylight

set up  standing  theatre  workshop

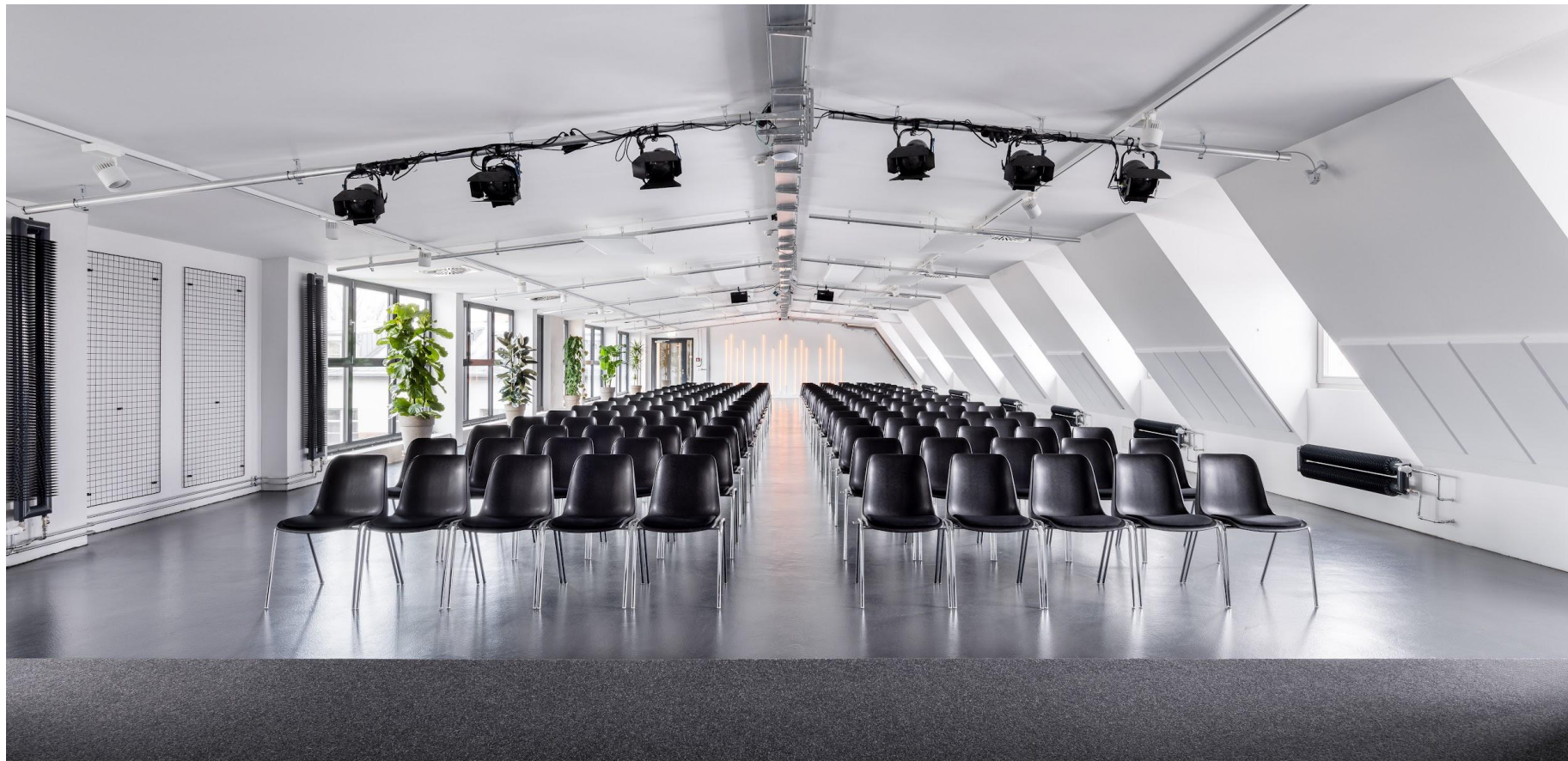
capacity 60 50 40

PERSIUS | 178 m²

65" screen - built-in LED Installation - WiFi - air conditioning - daylight

set up  standing  theatre  workshop

capacity 60 50 40



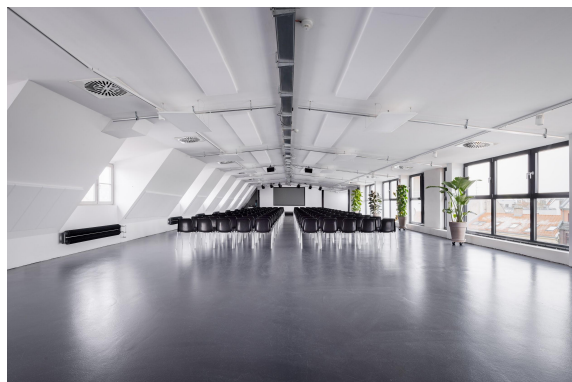
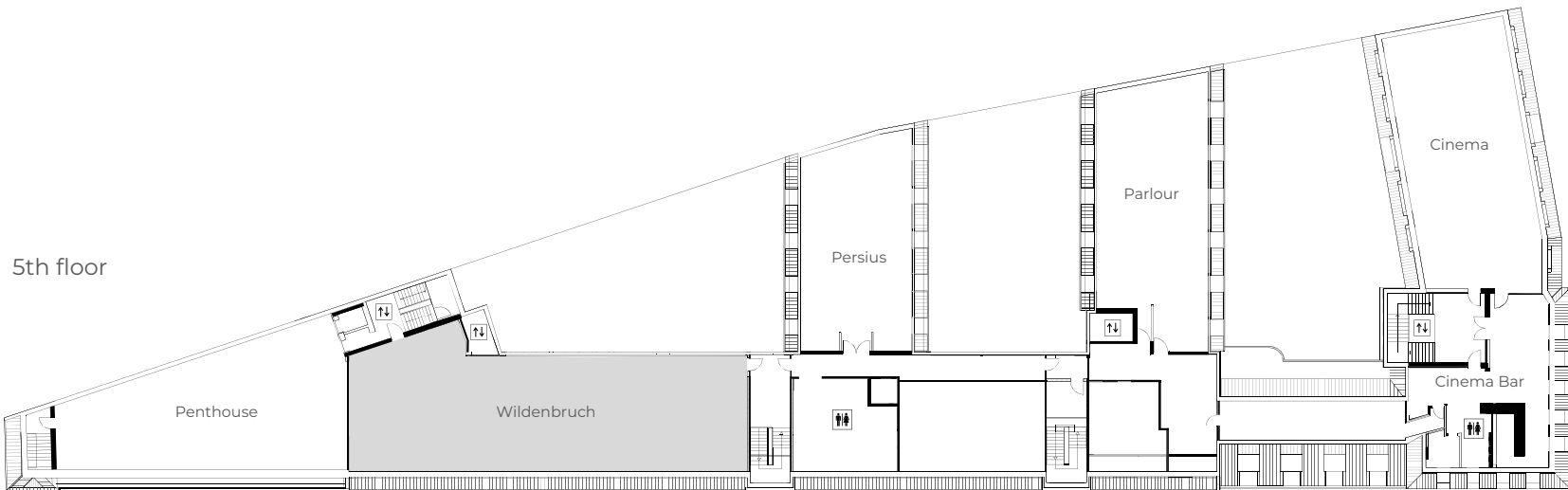
WILDENBRUCH



WILDENBRUCH

Wildenbruch, the largest event space on the fifth floor, offers a versatile and fully equipped framework for a wide range of events. Equipped with a stage, stage lighting, projectors and a screen, the space is suitable for impactful presentations, exhibitions, networking events and big gatherings.

With a capacity of up to 200 guests, Wildenbruch seamlessly adapts to your event's needs—whether it's a keynote, a startup showcase, or an evening reception.



WILDENBRUCH | 371 m²

Built-in stage - stage lighting - projector - screen 3,2 x 1,9m -
 sound system - WiFi - air conditioning - daylight

set up	 standing	 theatre	 workshop
capacity	<200	<200	90

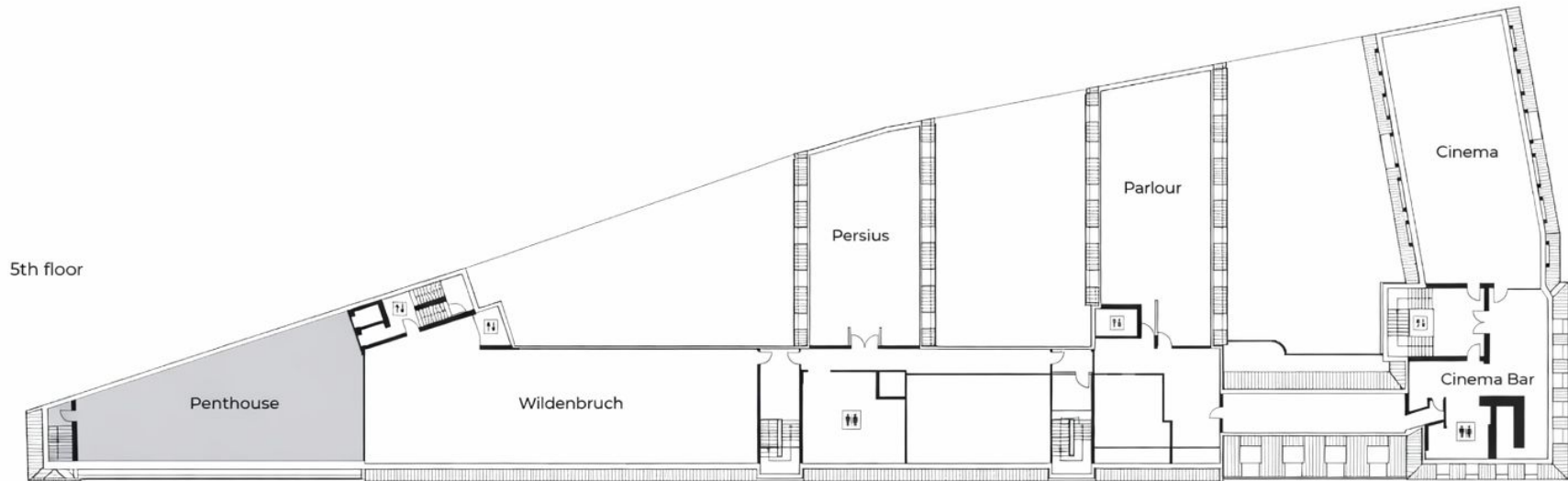


PENTHOUSE



PENTHOUSE

Featuring an open-plan layout, a cozy fireplace, and a charming terrace with city views. Perfect for networking receptions, birthday celebrations, C-level meetings, workshops, or casual drinks with colleagues, this space blends sophistication with comfort, creating memorable experiences for every occasion.



PENTHOUSE | 185.4 m²

TV Screen - WiFi - air conditioning - daylight - fireplace

set up	standing	banquet	workshop
capacity	60	40	40

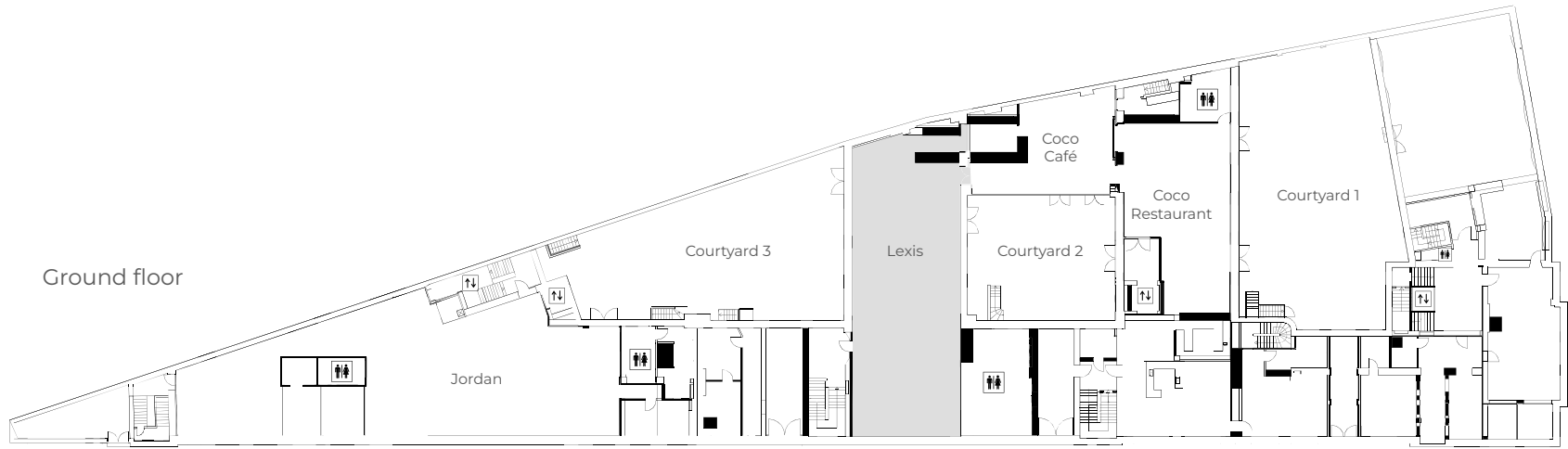


LEXIS



LEXIS

Located on the ground floor with its own private entrance through a courtyard, Lexis provides a versatile and fully equipped space for events of up to 200 guests. Featuring a built-in stage, stage lighting, two projectors, and two screens, it seamlessly accommodates a variety of functions, from presentations and panel discussions to networking sessions and live performances.



LEXIS | 300 m²

Built-in stage - stage lighting - two projectors - two screens 2,8 x 1,7m - 2 x 65" TV screens - sound system - WiFi - air conditioning - daylight

set up  standing  theatre  workshop

capacity <200 170 72

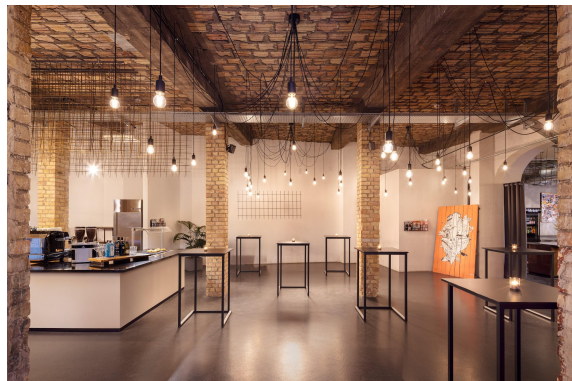
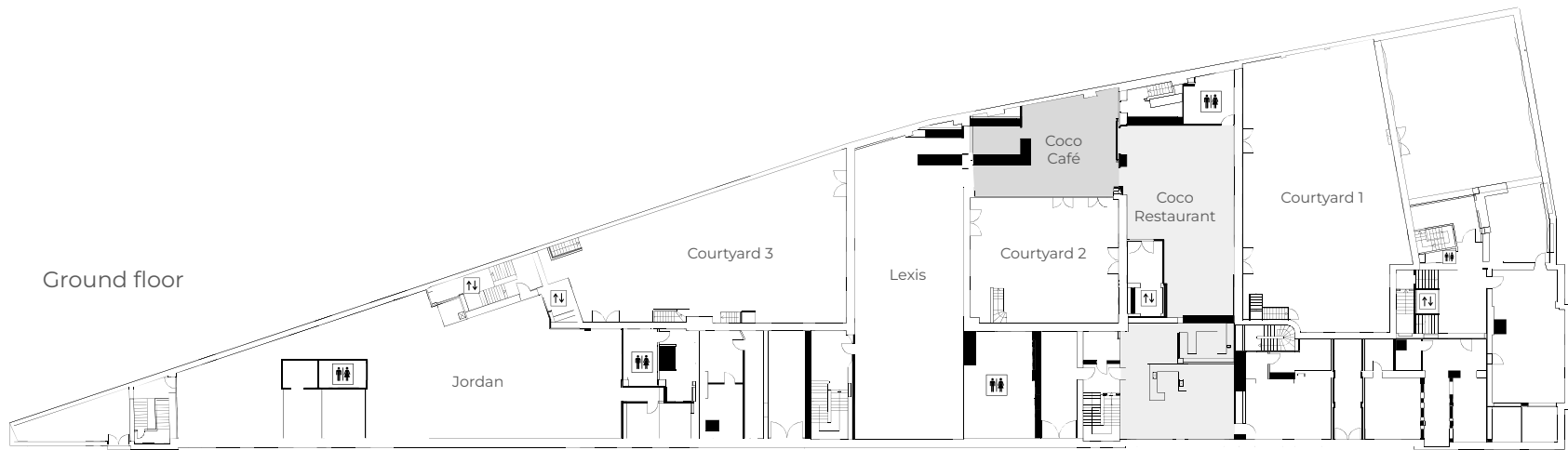


COCO



COCO

Whether you're looking to host a business lunch, an elegant dinner or a flying buffet with signature drinks for post-event networking, Coco offers a sophisticated ambience catering to your requirements. With an inviting courtyard entrance, refined brick aesthetics, a versatile menu to satisfy all preferences, Coco Café and Restaurant provide a smooth and memorable dining experience for any occasion.



COCO CAFÉ | 124 m²

Independent entrance - bar and bar kitchen - WiFi - background music - daylight

set up  standing

capacity 50

COCO RESTAURANT | 200 m²

Independent entrance - built-in seating nooks - WiFi - background music - daylight

set up  banquet

capacity 100



ELSE | 117 m²

set up  workshop

capacity 30

Comfortable and bright boardroom, ideal for smaller meeting and workshops. Designed for up to 30 people, it includes a 98" TV screen, whiteboard and coat hangers.



KIEFHOLZ | 120 m²

set up  workshop

capacity 32

Bright space, ideal for workshops, brainstorm meetings and presentations. Designed for up to 32 people, it includes a Samsung 85" Flip Pro Interactive UHD Display WM, whiteboards and coat hangers.



URBAN VENUE HUB 
by cic berlin

Lohmühlenstraße 65
12435 Berlin, Germany

berlin-events@cic.com
www.urbanvenuehub.com
www.cic.com/de