



# welcome to moa

Hotel MOA Berlin is  
your all-in-one perfect match for  
tailor-made experiences and  
stays of every kind - for  
business and private occasions.



## MOA Berlin

### Stay.

Modern 4\*\*\*\* independent hotel with 336 comfortable rooms & suites.

### Meet.

Central event location for conferences, meetings & conventions of various formats.

### Eat.

Culinary variety in the large restaurant with front cooking kitchen as well as MOA Event Catering & 3 separate event bars.

### Work.

Co-working area in a flexible and fully equipped working environment.



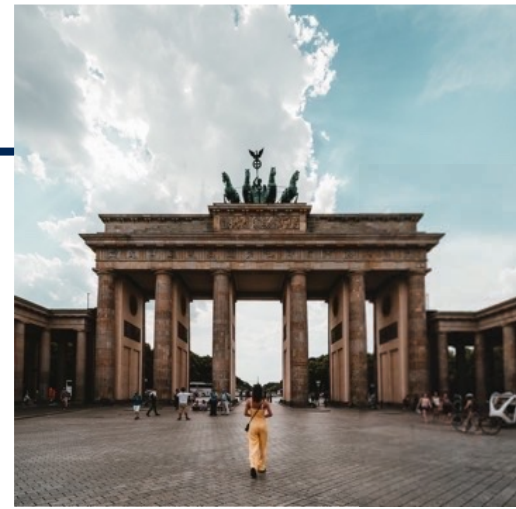
## MOA Berlin

MOA Berlin is a true all-rounder and much more than a conference hotel.

Whether award ceremony or meditation guru, whether meeting or Sunday brunch, whether city trip or business meeting - we live and love every day anew the many facets of encounters - because we burn for it!

MOA Berlin is located directly in the center of the capital. With our modern flair we promise business and private travelers as well as event participants a pleasant stay.

Our green atrium forms the center of the hotel and provides a special feeling in the middle of the capital.



Berlin



3

Public transport lines with S/U Westhafen, U Birkenstraße & tram Turmstraße on site

15

Bus minutes to the main station

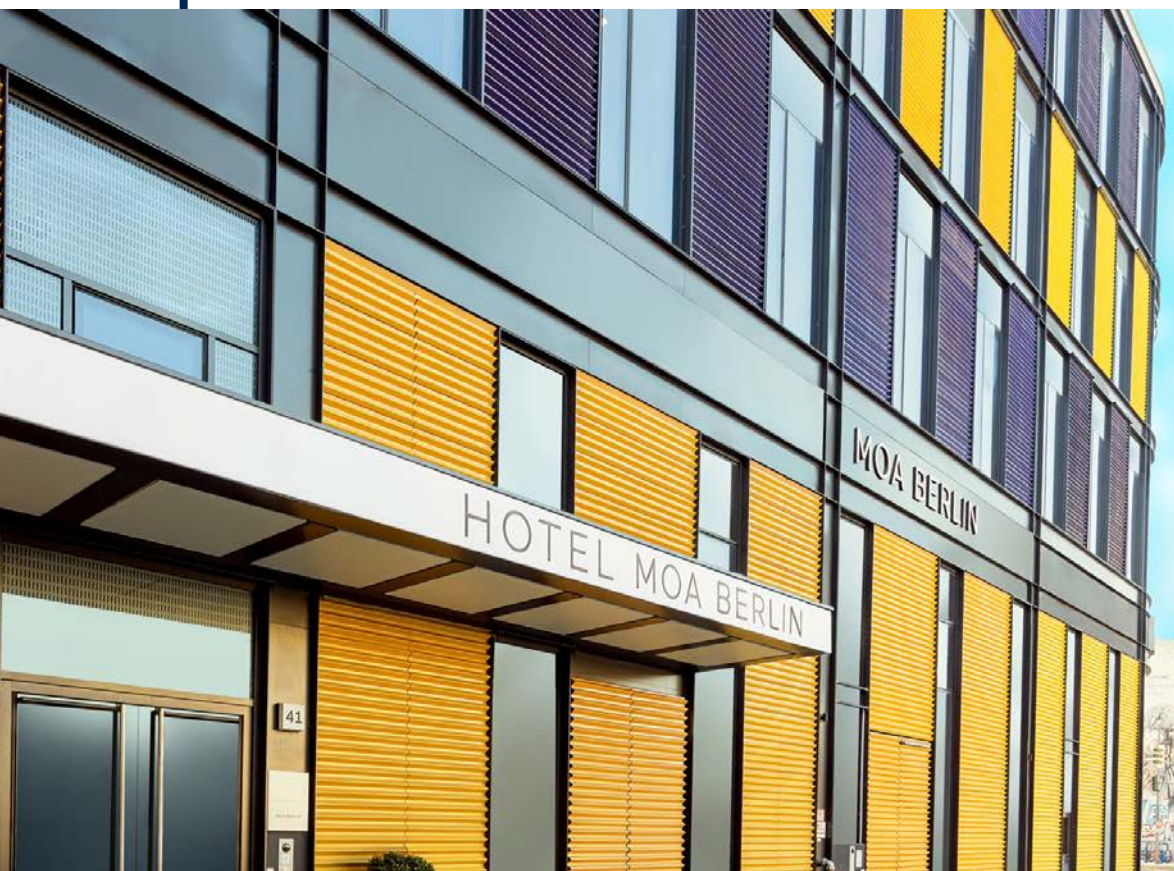
11

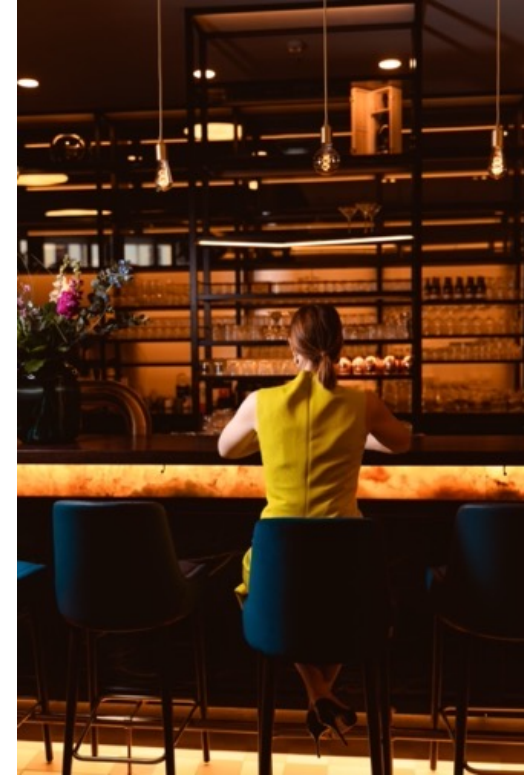
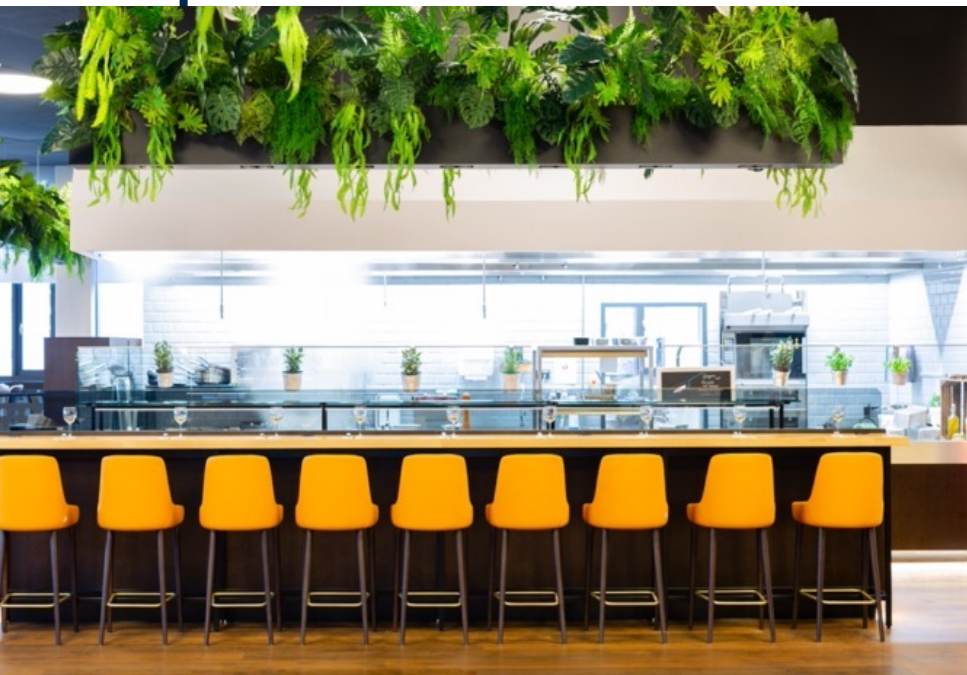
BER-Express-lines per hour from BER to the city center

45

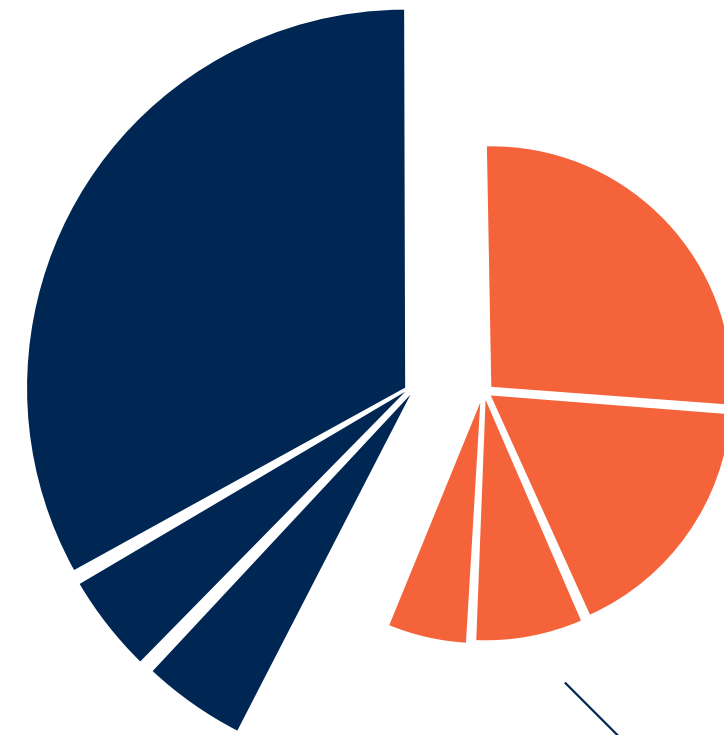
Minutes by car to BER airport

With our location in Berlin Mitte, we are right on the pulse of the capital and yet in a quiet location - a kind of central haven of peace in the urban jungle of the city.





Hotel MOA Berlin



MOA MEET

# 336

Rooms & Suites

# 24h

Rezeption & Service

# 440

Parking spaces incl. 20 e-charging stations in the hotel parking garage



CERTIFIED PARTNER  
**SUSTAINABLE BERLIN** | Leader

GSTC Recognized



# MOA Berlin



No matter what day it is and in which of our 336 rooms - we ensure that our guests find the necessary rest and relaxation after a successful day of events.

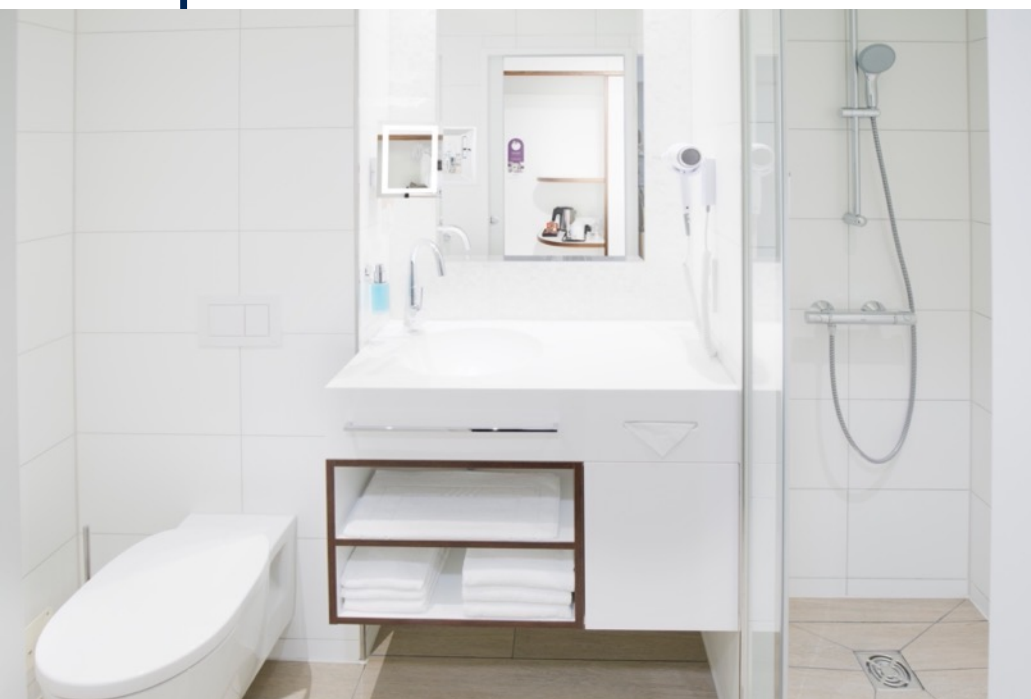
336 rooms & suites | 4 stars | 24/7 reception | room allotments possible | 440 parking spaces

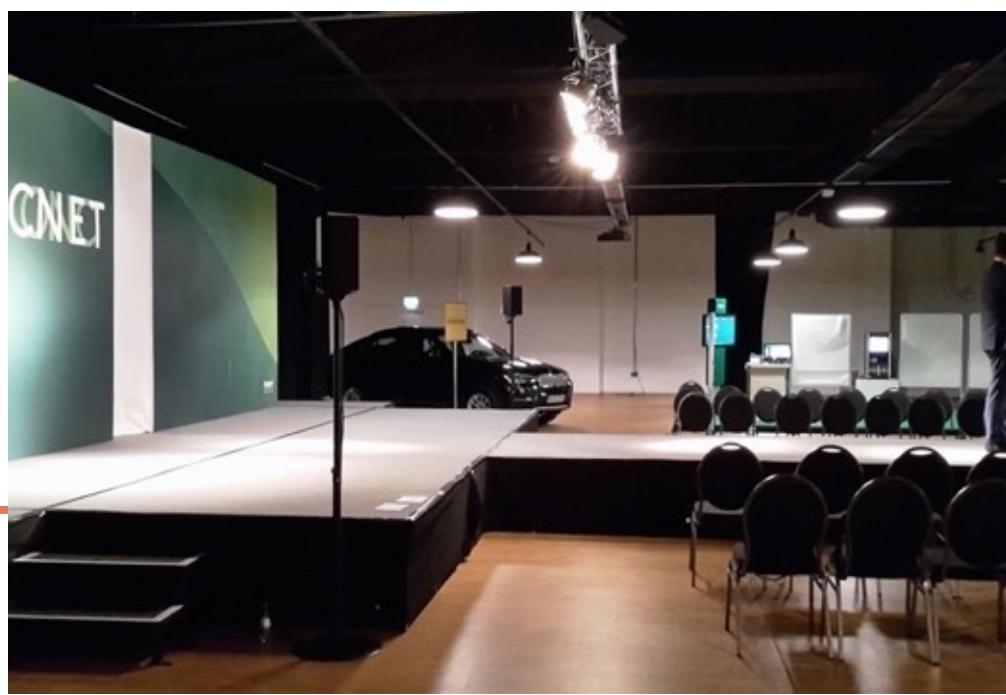


# MOA Berlin

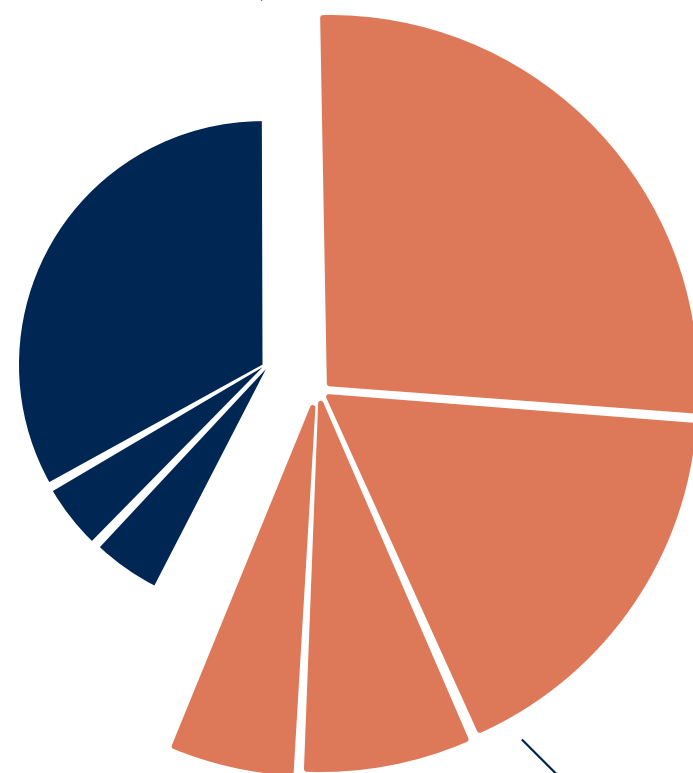
Standard & Superior Double Rooms | Junior & Superior Suites | Deluxe Suites | Single Rooms.

Our spacious rooms are at least 20 m<sup>2</sup> in size and ideally suited to guest needs. In addition to a flat-screen TV and telephone, they feature a high-quality double bed, comfortable seating, a functional workstation and free Wi-Fi.





Hotel MOA Berlin



MOA MEET

**7.500m<sup>2</sup>**

total space with high quality conference technology

**4.000**

guests

**40**

event rooms of various sizes

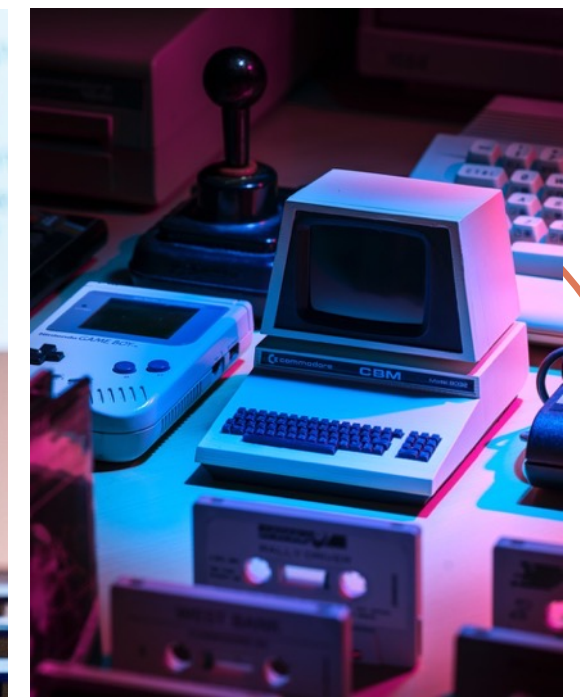
**MOA**  
MEET



**We find the perfect match.**

Our 40 event spaces consisting of different sized meeting rooms and meeting suites, the Convention Hall and the light-flooded Atrium, are spread over three event levels. Thanks to our **flexible room concept**, everyone is guaranteed to find their favorite room constellation for their event.

**40 conference and event rooms** | 7,500 m<sup>2</sup>  
4,000 guests | Conferences & meetings  
Fashion shows | Conferences | Trade fairs  
Product presentations | Private business  
lunches & dinners | Concerts & musicals  
LED lighting concept | 4m ceiling height  
12m ceiling height in the atrium



## Hybrid & virtual.

Our goal - a consistent experience  
Our partners work innovatively & support you with years of experience.

From live video streams, to digital check-in, virtual booths or digital collaboration networks during your event. Our gigabit connectivity stands the test of time.

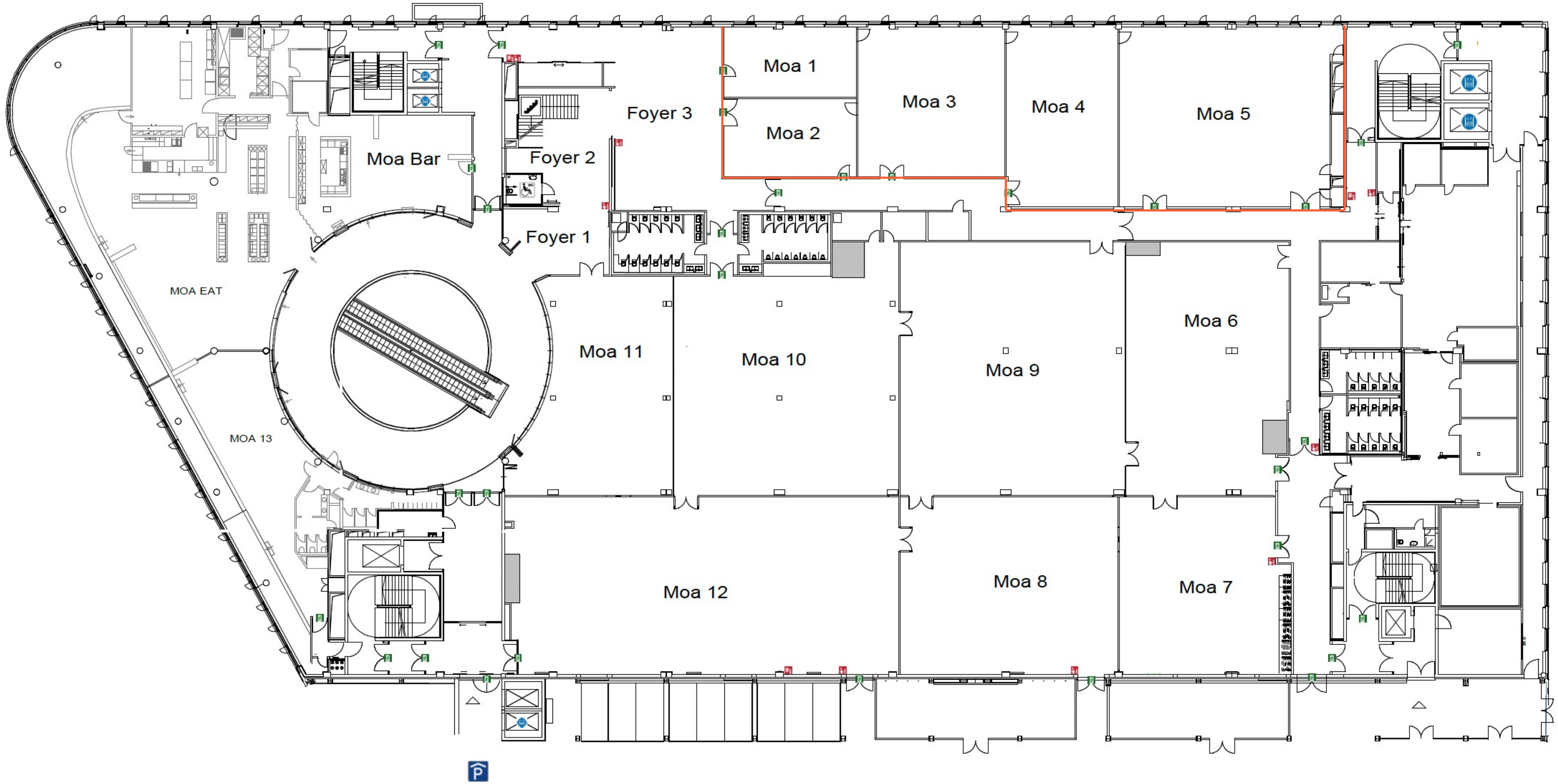
## Know-How & Equipment

Professional know-how of internal technicians as well as external technology partners.  
Tailor-made & field-tested technology concepts.  
Consulting & planning of technical requirements.  
Creative & budget-oriented implementation.  
High-speed wifi for digital & hybrid formats.

## MOA Meet Tech Stack

Sound. ideal room acoustics, tuned digital sound technology & wireless microphony.  
Conference. Powerful projectors, video conference systems incl. microphone technology.  
Lighting. Moving light systems, spotlights, fog machines, projectors & individual LED lighting concept.  
Media: powerful projection technology, large screen formats & LED technology. Stage construction & rigging: flying systems & trusses

# 1st floor: MOA 1 – MOA 5



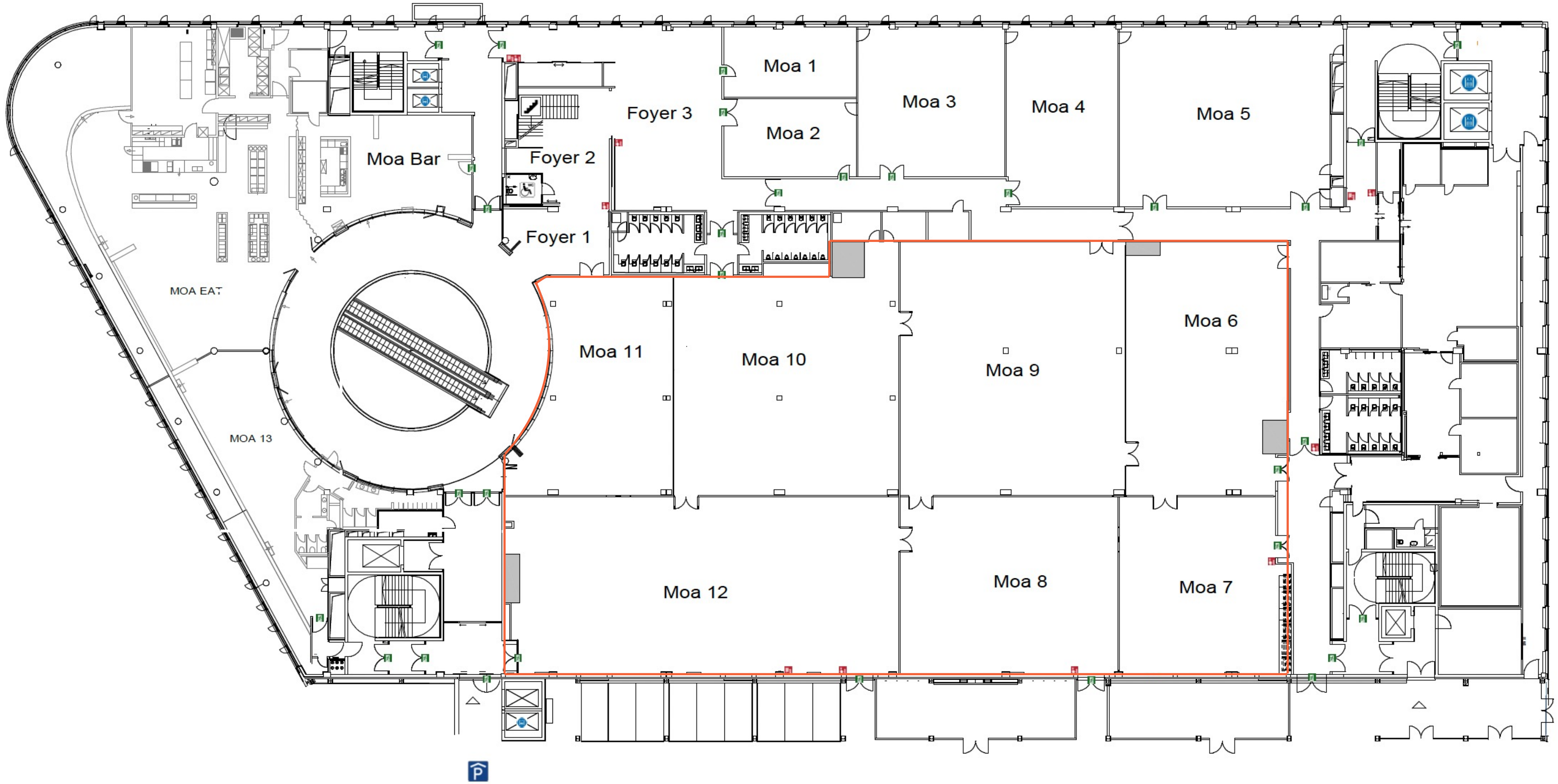


# MOA 1-5

695 m<sup>2</sup> separable into 5 sections  
Daylight, air-conditioned, car-accessible, modern carpeting  
LED lighting concept & digital signage  
4 m ceiling height  
Separate entrance area possible



# 1st floor: MOA 6–MOA 12 | Convention Hall





# MOA 6-12

2258 m<sup>2</sup> divided into 7 sections, air-conditioned, accessible by car, power connections available, modern lighting concept, high-quality carpet/parquet flooring, separate entrance area possible, 4 m ceiling height.  
floor load 509 kg per m<sup>2</sup>



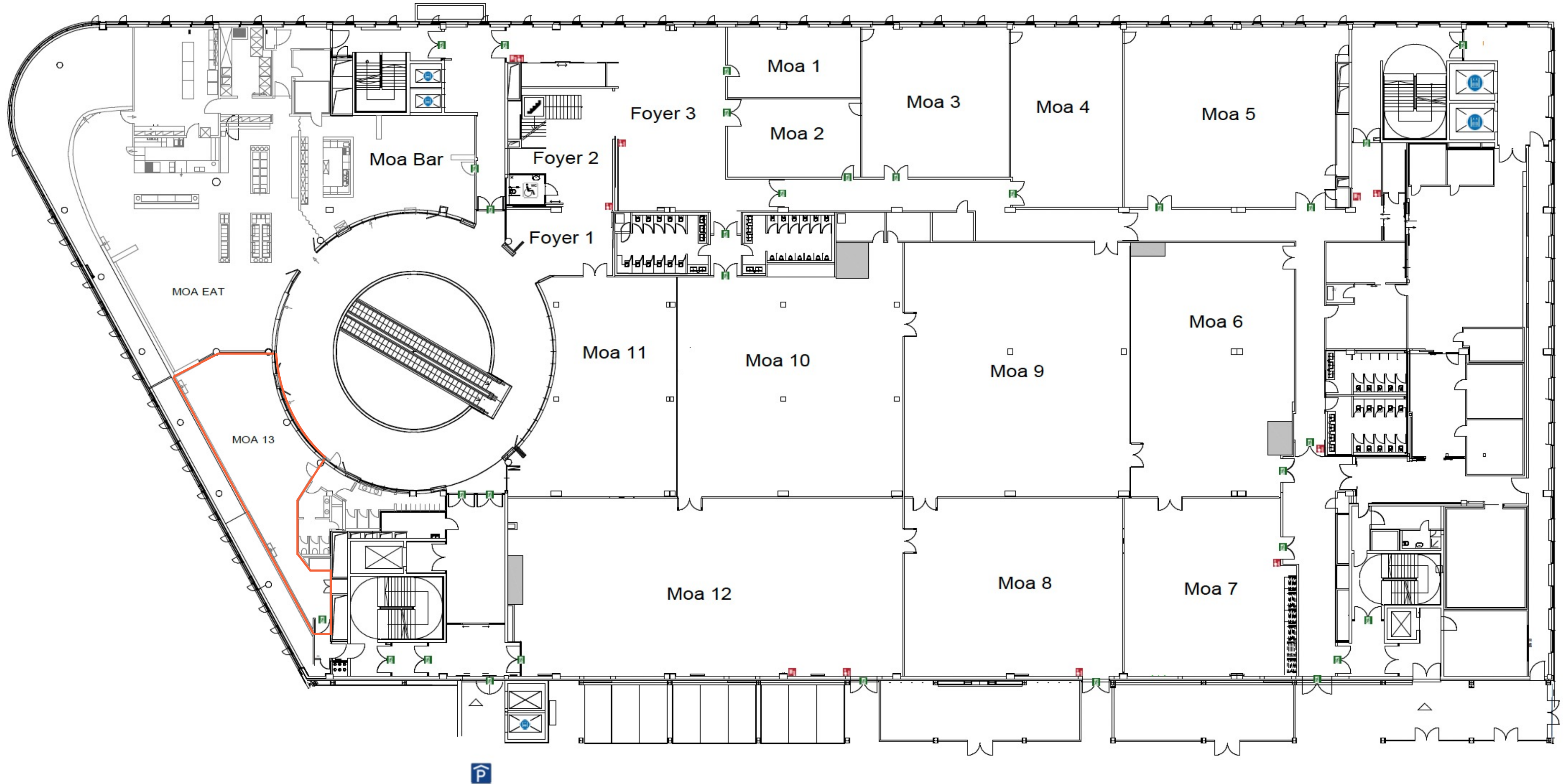
# MOA 6-12

Due to the flexible room concepts, our meeting rooms of different sizes can be combined with each other.

Our modern LED lighting concept allows you to design your meeting room individually according to your corporate identity specifications.

Conferences | Company celebrations | Fashion shows | Trade fairs | Congresses | Concerts

# 1st floor: MOA 13





# MOA 13

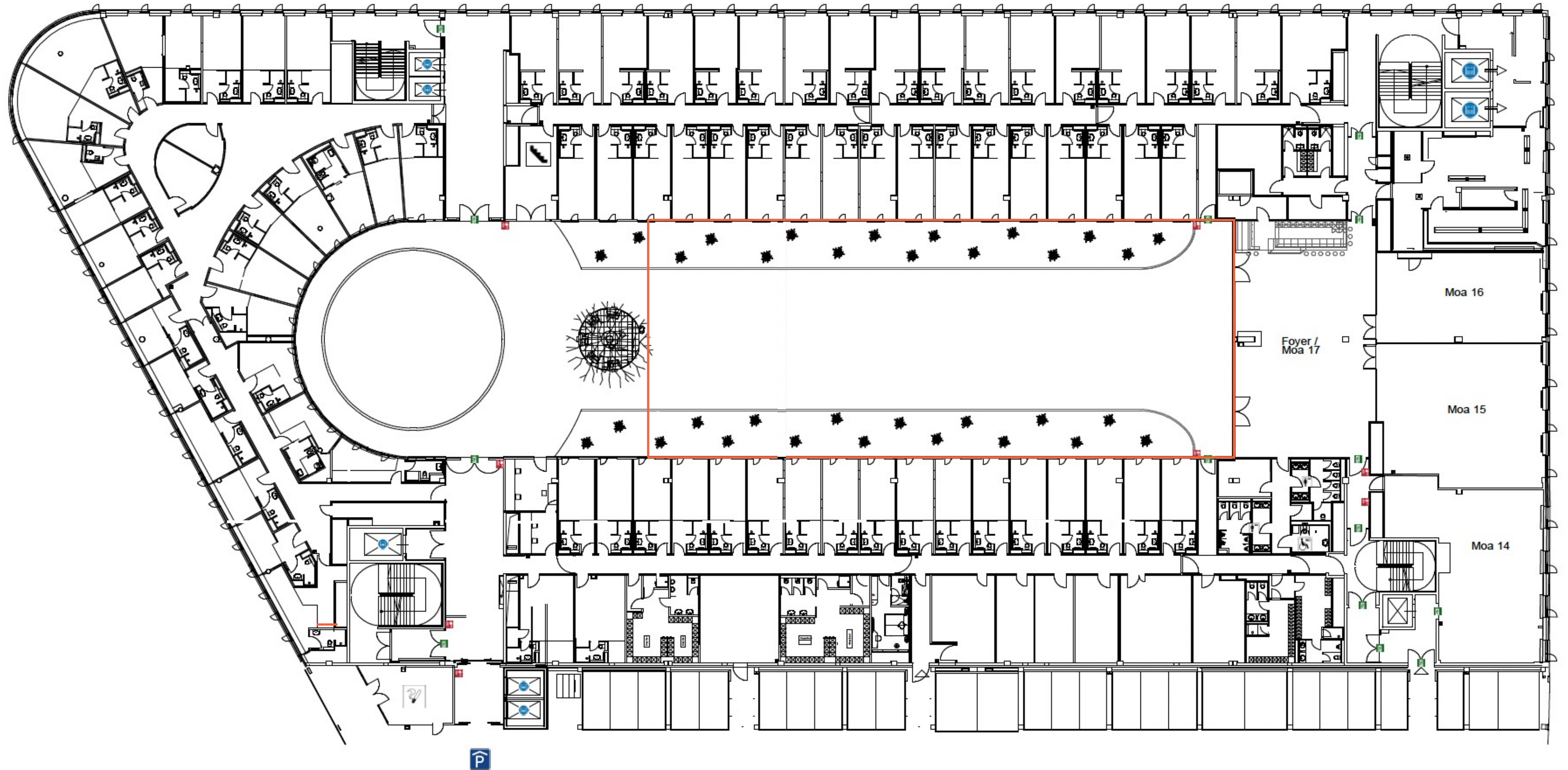
Daylight

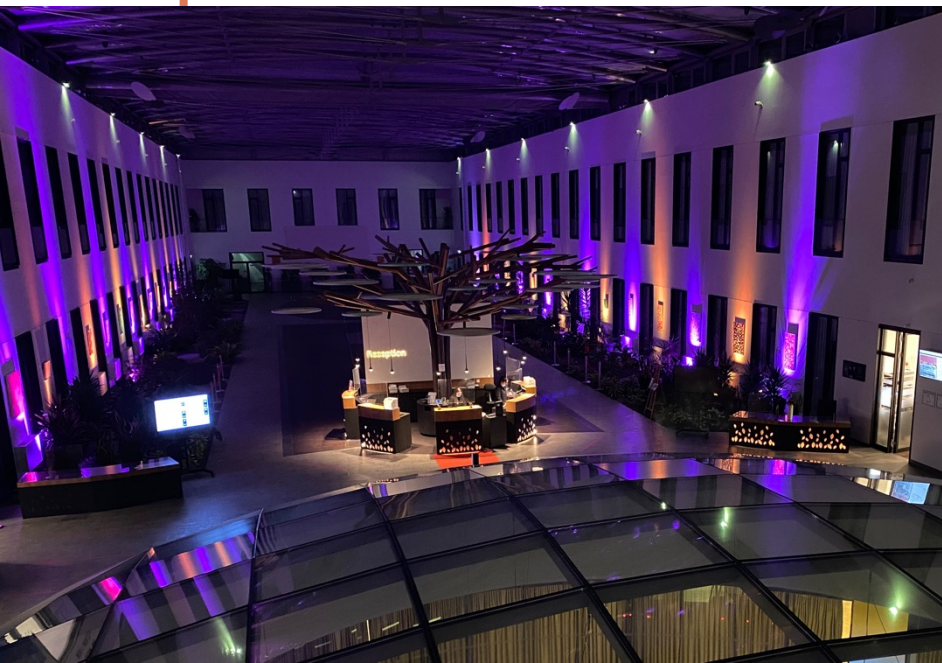
The versatile event space of MOA 13 is ideal for lectures, readings, exhibitions, workshops, seminars.

On request only.



# 2nd floor: The Atrium

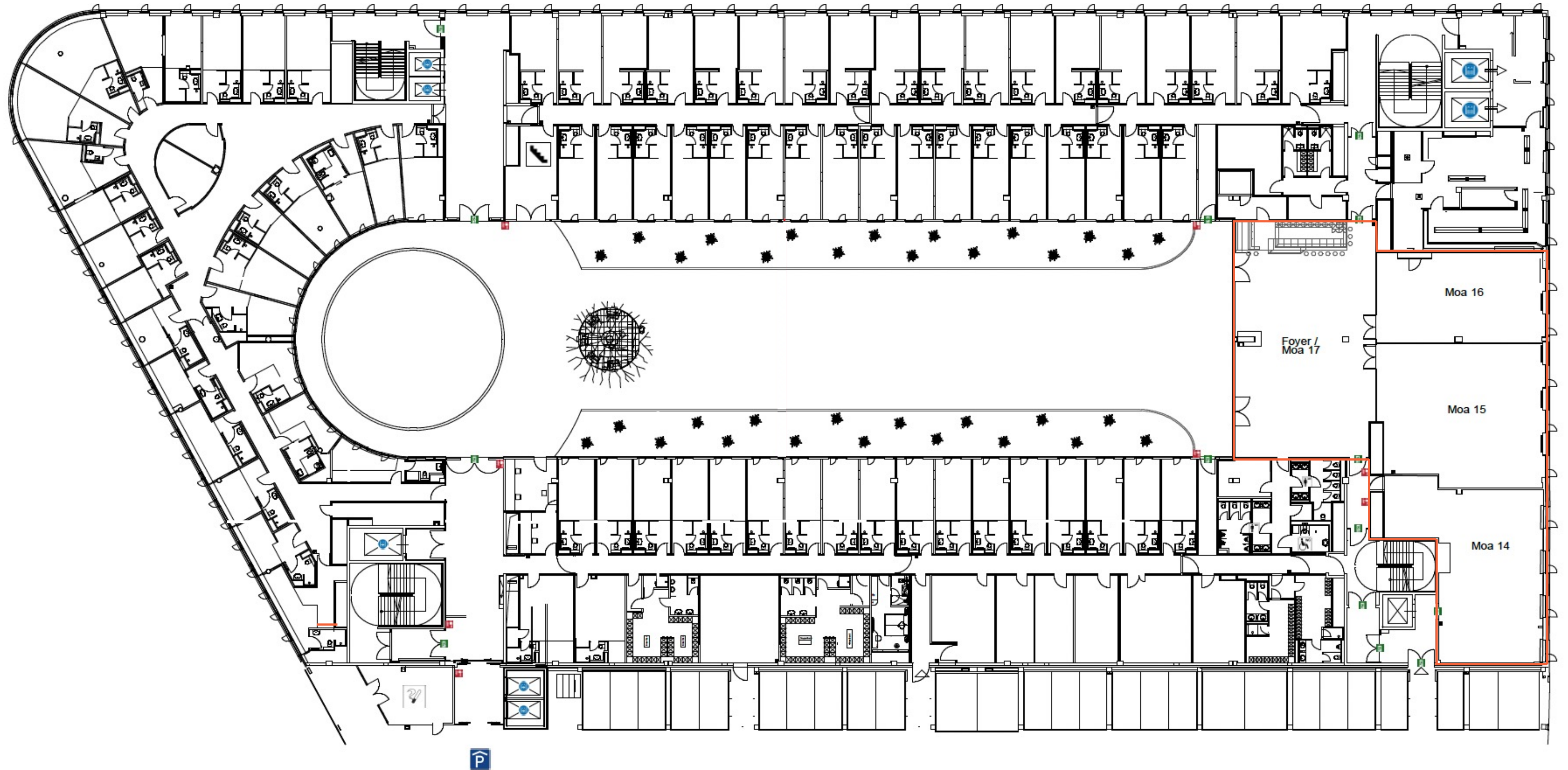


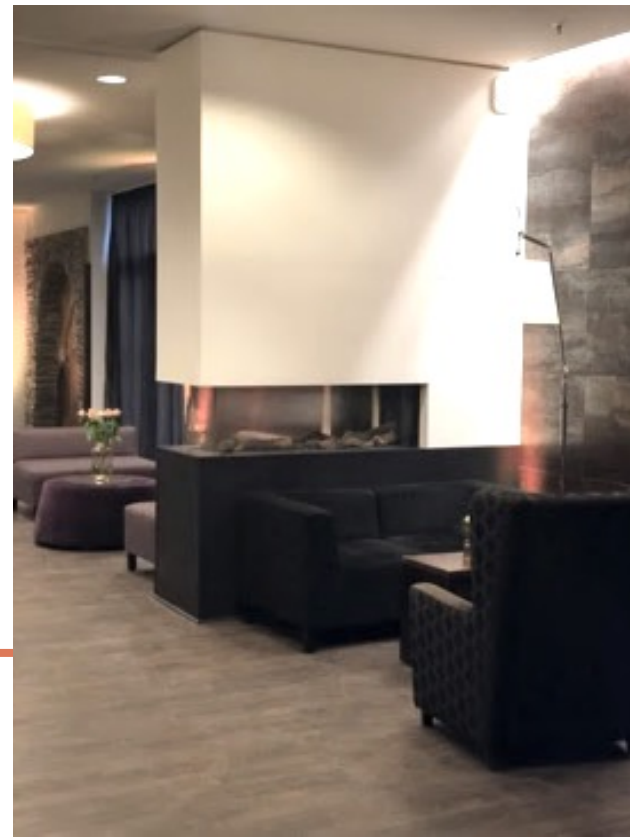
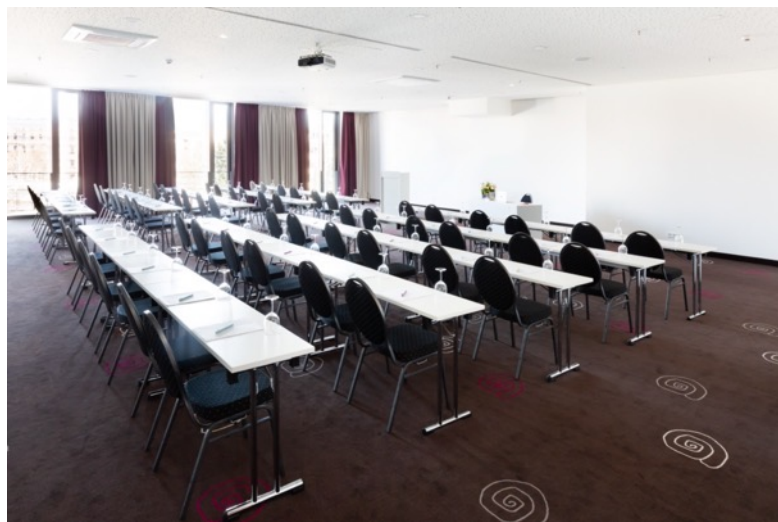


# Atrium

600 m<sup>2</sup>  
12 m ceiling height  
Floor load 509 kg per m<sup>2</sup>  
Flooded with daylight  
Decorative green areas

# 2nd floor: MOA 14 – MOA 17

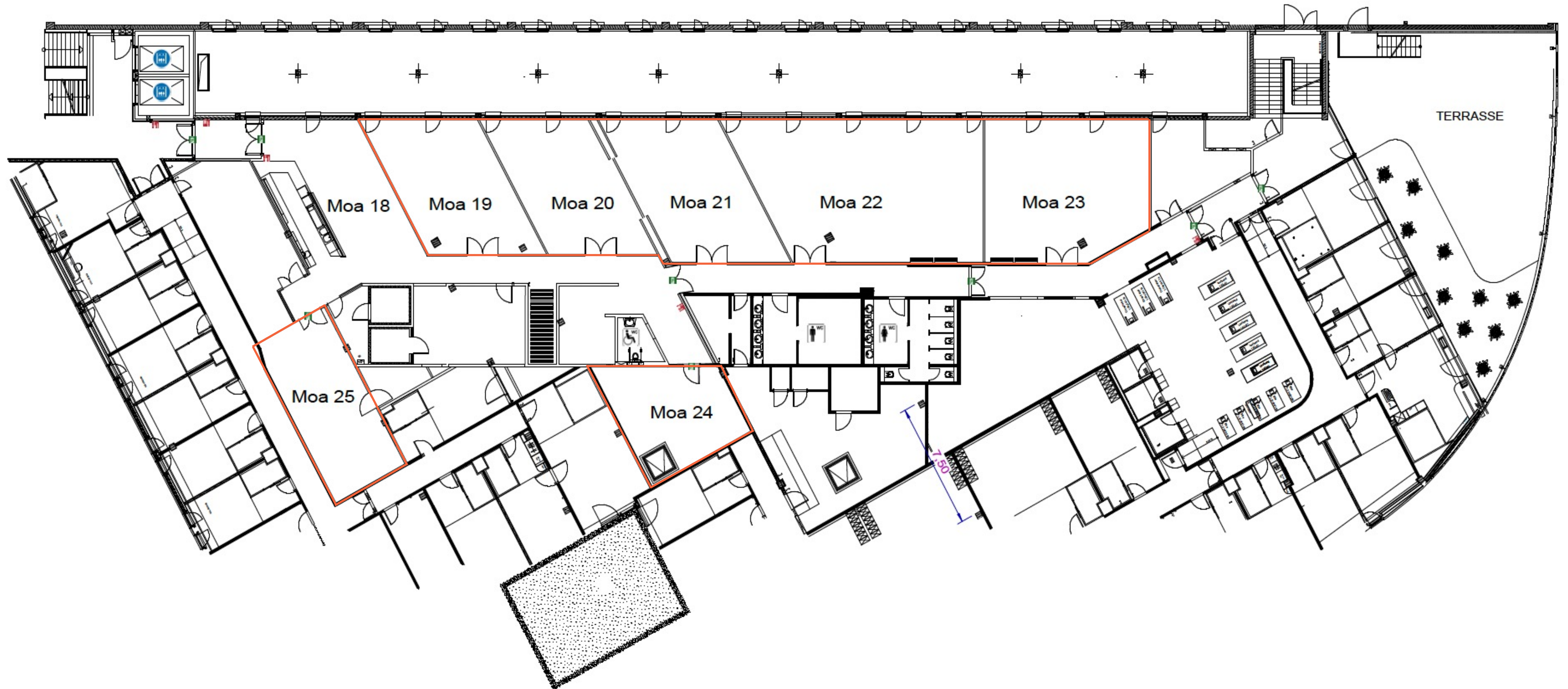




# MOA 15-17

470 m<sup>2</sup> exclusive event area  
3 rooms from 105 - 204 m<sup>2</sup>  
Exclusive foyer with bar  
Variable combination up to 430 PAX  
expandable through the atrium  
Daylight  
Versatile event space for lectures,  
readings, exhibitions, workshops &  
seminars

# 3rd floor: MOA 18 – MOA 25





# MOA 18–25

- Daylight
- Air-conditioned
- Modern carpet
- Exclusive terrace access
- Foyer including bar
- 3.10 m ceiling height
- MOA 18 - 23 can be combined throughout
- Independent event area



## Nice to suite you!

Our 10 loft-style meeting suites provide absolute big city flair & a meeting experience of a different kind.

Whether business meetings, coaching sessions or private lunches - our conference suites ensure a productive meeting in a cozy living room atmosphere. The integrated kitchenette with refrigerator and coffee maker allows you to hold private meetings - completely undisturbed.

30 m2 per floor | Daylight | WC



# Suite Life

Our Business & Meeting Suites





## For Food Lovers.

Whether it's breakfast with a fresh kick, Mediterranean antipasti in a meeting, Berlin classics reinterpreted or a menu of your choice - our kitchen team knows how to think big and cook to the point!

Front Cooking | 380 seats | separable restaurant areas | catering for large events

Invite your guests to our MOA BAR for after-hours in the evening or combine your meeting with a subsequent lunch or dinner directly in the MOA BAR?

75 m2 | 70 PAX | Exclusively bookable



## Event Catering

Catering for every conference and large event.

Oriental bagels with halloumi, a typical Berlin Stulle or rather wholemeal bread & smoothie shots?

Our MOA toppings give your event that certain kick from the candy bar to pimp-your-secco or our colorful waffle station!



## Tailor-made.

**Included:** Basic technology equipment for your first meeting room: projector | screen | flip-chart | pin board | presentation case | WLAN.

**On request:** From storage table, to stage and sound system, LED lighting, microphone & media equipment, technical support, video systems & exclusive Wlan.



# Some feedback.

## Perfect location

We felt welcome from the very first minute. The atmosphere, the lovingly prepared and extensive brunch buffet and the attentive team created exactly the setting that our event needed: a place where real encounters can take place and women can network in a relaxed and inspiring environment.

What particularly impressed us: The professionalism and warmth of the entire team. From the initial discussions with the event team to the on-site service. Everything ran smoothly and we were able to concentrate on what our job was - our event and the networking of our guests. And that's exactly how it should be.

That's why we're really looking forward to organising more brunches at MOA Berlin in 2026. After all, if you want networking to have a real impact, you not only need the right people, but also the right place. And we've definitely found it here.

Thank you to the entire MOA BERLIN team for your hospitality - we'll be back!

**January 2026**

Maria Fedtke, Lisa Liebenau, Carolin Zahn

Female Business Brunch

## Highly recommended!

We were very satisfied with our event at MOA Berlin. Everything was perfect. Both the planning (communication) in advance and the on-site support. The entire hotel staff was very friendly and courteous. There was plenty of choice of food, so there was something for every taste and intolerance and the flavour was very good. The accessibility and connection to the hotel is great.

The rooms and the hotel are really great and we can only recommend anyone to book the MOA Berlin.

**October 2024**

Anonymous



## Want MOA?

### **MOA, you make me feel so high!**

Catch the feeling for a moment: a flight over & through MOA Berlin. **[This way!](#)**

### **Nice to #suite you!**

Want to take a look at our maisonette suites? Ideal for private meetings or small meetings.

**[This way!](#)**

### **Sweet dreams!**

Take a look at our Privilege double rooms

**[This way!](#)**

# Numbers, data, facts.

| Room<br>1st floor | Ceiling<br>height<br>3,95 m<br>Area | Measures<br>(m) | Parliament | U-shape | Block/<br>Board | Chairs in<br>rows | Round table<br>á 10 Pax | Cabaret<br>á 7 Pax |
|-------------------|-------------------------------------|-----------------|------------|---------|-----------------|-------------------|-------------------------|--------------------|
| <b>MOA 1</b>      | 63 sqm                              | 11,2 x 5,6      | 36         | 20      | 20              | 64                | 30                      | 21                 |
| <b>MOA 2</b>      | 75 sqm                              | 11,2 x 6,7      | 30         | 18      | 24              | 64                | 30                      | 28                 |
| <b>MOA 3</b>      | 158 sqm                             | 12,6 x 12,5     | 98         | 30      | 40              | 180               | 90                      | 63                 |
| <b>MOA 4</b>      | 141 sqm                             | 9,5 x 14,8      | 90         | 32      | 32              | 165               | 80                      | 56                 |
| <b>MOA 5</b>      | 265 sqm                             | 17,9 x 14,8     | 140        | 44      | 60              | 296               | 140                     | 105                |
| <b>MOA 6</b>      | 289 sqm                             | 13,7 x 21,1     | 116        | 50      | 60              | 267               | 150                     | 105                |
| <b>MOA 7</b>      | 197 sqm                             | 13,3 x 14,8     | 100        | 36      | 48              | 139               | 110                     | 63                 |
| <b>MOA 8</b>      | 279 sqm                             | 18,6 x 15,0     | 150        | 42      | 40              | 180               | 150                     | 91                 |
| <b>MOA 9</b>      | 407 sqm                             | 19,1 x 21,3     | 236        | 58      | 72              | 374               | 200                     | 126                |
| <b>MOA 10</b>     | 374 sqm                             | 19,0 x 19,7     | 182        | 52      | 68              | 312               | 180                     | 126                |
| <b>MOA 11</b>     | 204 sqm                             | 11,0 x 18,5     | 110        | 42      | 48              | 156               | 100                     | 70                 |
| <b>MOA 12</b>     | 492 sqm                             | 32,8 x 15,0     | 272        | 78      | 96              | 522               | 280                     | 189                |
| <b>MOA 13</b>     | 99 sqm                              | 14,0 x 7,1      | 42         | 24      | 30              | 81                | 50                      | 35                 |

# Numbers, data, facts.

| Room<br>3rd floor    | Ceiling<br>height<br>3,95 m<br>Area | Measures<br>(m) | Parliament | U-shape | Block/<br>Board | Chairs in<br>rows | Round table<br>á 10 Pax | Cabaret<br>á 7 Pax |
|----------------------|-------------------------------------|-----------------|------------|---------|-----------------|-------------------|-------------------------|--------------------|
| <b>MOA 1+2</b>       | 138 sqm                             | 11,2 x 12,3     | 70         | 28      | 40              | 135               | 80                      | 56                 |
| <b>MOA 1-3</b>       | 298 sqm                             | 23,8 x 12,5     | 168        | 54      | 68              | 290               | 170                     | 119                |
| <b>MOA 1-4</b>       | 435 sqm                             | 33,3 x 12,5     | 256        | 78      | 88              | 464               | 230                     | 161                |
| <b>MOA 1-5</b>       | 695 sqm                             | 51,2 x 12,5     | 388        | 122     | 136             | 802               | 430                     | 294                |
| <b>MOA 3+4</b>       | 295 sqm                             | 22,1 x 12,5     | 172        | 54      | 64              | 320               | 170                     | 105                |
| <b>MOA 3-5</b>       | 559 sqm                             | 40,3 x 12,5     | 304        | 98      | 108             | 671               | 340                     | 238                |
| <b>MOA 4+5</b>       | 406 sqm                             | 27,5 x 14,8     | 224        | 68      | 84              | 453               | 240                     | 168                |
| <b>MOA 6+7</b>       | 485 sqm                             | 13,5 x 35,9     | 222        | -       | -               | 435               | 250                     | 168                |
| <b>MOA 6+9</b>       | 695 sqm                             | 32,8 x 21,2     | 344        | -       | -               | 666               | 390                     | 273                |
| <b>MOA 7+8</b>       | 475 sqm                             | 31,9 x 14,9     | 260        | 58      | 88              | 412               | 300                     | 168                |
| <b>MOA 6-9</b>       | 1167 sqm                            | 32,5 x 35,9     | 654        | -       | -               | 1065              | 590                     | 413                |
| <b>MOA 8+9</b>       | 682 sqm                             | 18,8 x 36,3     | 436        | -       | -               | 704               | 430                     | 245                |
| <b>MOA 8-12</b>      | 1756 sqm                            | 51,4 x 30,0     | 976        | -       | -               | 1600              | 910                     | 637                |
| <b>MOA 10+11</b>     | 570 sqm                             | 30,0 x 19,0     | 278        | -       | -               | 504               | 330                     | 175                |
| <b>MOA 10-12</b>     | 1120 sqm                            | 32,0 x 35,0     | 558        | -       | -               | 1038              | 600                     | 434                |
| <b>MOA 6+9+10+11</b> | 1294 sqm                            | 65,6 x 19,0     | 638        | -       | 168             | 1143              | 650                     | 483                |
| <b>MOA 6-12</b>      | 2258 sqm                            | 65,0 x 33,5     | 1012       | -       | -               | 1800              | 1080                    | 756                |

# Numbers, data, facts.

| Room<br>2nd floor | Ceiling<br>height<br>12,00 m<br>Area       | Measures<br>(m) | Parliament | U-shape | Block/<br>Board | Chairs in<br>rows | Round table<br>á 10 Pax | Cabaret<br>á 7 Pax |
|-------------------|--|-----------------|------------|---------|-----------------|-------------------|-------------------------|--------------------|
| <b>Atrium</b>     | 600 sqm<br><br>Ceiling<br>height<br>3,50 m | 50,0 x 12,0     | 396        | 114     | 128             | 680               | 370                     | 259                |
| <b>MOA 14</b>     | 128 sqm                                    | 14,7 x 8,7      | 80         | 30      | 36              | 129               | 70                      | 49                 |
| <b>MOA 15</b>     | 161 sqm                                    | 12,2 x 13,2     | 104        | 32      | 40              | 176               | 100                     | 63                 |
| <b>MOA 16</b>     | 105 sqm                                    | 7,5 x 14,0      | 46         | 28      | 32              | 108               | 70                      | 42                 |
| <b>MOA 17</b>     | 204 sqm                                    | 17,0 x 12,0     | 90         | 36      | 56              | 121               | 80                      | 70                 |
| <b>MOA 15+16</b>  | 266 sqm                                    | 19,7 x 13,5     | 150        | 42      | 60              | 262               | 180                     | 119                |
| <b>MOA 15-17</b>  | 470 sqm                                    | 19,7 x 25,2     | 206        | 60      | 72              | 428               | 270                     | 175                |

# Numbers, data, facts.

| Room<br>3rd floor | Ceiling<br>height<br>3,10 m<br>Area | Measures<br>(m) | Parliament | U-shape | Block/<br>Board | Chairs in<br>rows | Round table<br>á 10 Pax | Cabaret<br>á 7 Pax |
|-------------------|-------------------------------------|-----------------|------------|---------|-----------------|-------------------|-------------------------|--------------------|
| <b>MOA 19</b>     | 58 sqm                              | 6,8 x 8,5       | 24         | 12      | 16              | 28                | 40                      | 14                 |
| <b>MOA 20</b>     | 52 sqm                              | 6,0 x 8,7       | 26         | 12      | 16              | 41                | 20                      | 14                 |
| <b>MOA 21</b>     | 56 sqm                              | 6,4 x 8,7       | 26         | 16      | 20              | 45                | 40                      | 21                 |
| <b>MOA 22</b>     | 123 sqm                             | 14,7 x 8,4      | 54         | 24      | 30              | 104               | 70                      | 49                 |
| <b>MOA 23</b>     | 76 sqm                              | 9,8 x 7,8       | 42         | 20      | 28              | 77                | 50                      | 28                 |
| <b>MOA 24</b>     | 42 sqm                              | 6,0 x 7,0       | 16         | 12      | 16              | 36                | 20                      | 14                 |
| <b>MOA 25</b>     | 51 sqm                              | 4,9 x 10,5      | 22         | 18      | 20              | 46                | 30                      | 14                 |
| <b>MOA 19+20</b>  | 110 sqm                             | 12,8 x 8,6      | 48         | 24      | 32              | 95                | 80                      | 42                 |
| <b>MOA 21+22</b>  | 179 sqm                             | 21,0 x 8,5      | 104        | 46      | 50              | 167               | 120                     | 77                 |
| <b>MOA 22+23</b>  | 198 sqm                             | 24,5 x 8,1      | 100        | 52      | 58              | 211               | 140                     | 91                 |
| <b>MOA 21-23</b>  | 259 sqm                             | 30,5 x 8,5      | 136        | 68      | 78              | 280               | 140                     | 126                |

CERTIFIED PARTNER  
**SUSTAINABLE**  
**BERLIN**

Leader



GSTC Recognized



## We are Leader!

We were one of the first conference hotels in Berlin to be certified as a **leader** by both **Sustainable Tourism Berlin** and **Sustainable Meetings Berlin** in an **independent double audit** in the hotel sector.

More about our goals under  
[Sustainability Strategy 2024](#)

Everything about the sustainability topic at  
[MOA Sustainability Hub](#)

# Convention Team



**Valérie Forget**

Head of Sales &  
Events

[vfo@moa.de](mailto:vfo@moa.de)

+49 30 394043 7302



**Shirley Tramper**

Assistant Head of  
Convention Sales

[str@moa.de](mailto:str@moa.de)

+49 30 394043 7308



**Chris Ewald Jelinek**

Convention & Revenue  
Coordinator

[cje@moa.de](mailto:cje@moa.de)

+49 30 39 40 43 7318



**Hassibullah Baghlani**

Team Assistant Convention  
Sales & Events

[hba@moa.de](mailto:hba@moa.de)

+49 30 39 40 43 7352



**David Schmidt**

Senior Convention  
Manager

[dsc@moa.de](mailto:dsc@moa.de)

+49 30 39 40 43 7315

Hello,  
it's us!

The MOA MEET Team



**Paul Feustel**

Convention Sales  
Manager

[pfe@moa.de](mailto:pfe@moa.de)

+49 30 394043 7312



**Julia Zaides-Kara**

Customer  
Success Manager

[jza@moa.de](mailto:jza@moa.de)

+49 30 394043 7303



**Sophie Luck**

Junior Convention  
Manager

[slu@moa.de](mailto:slu@moa.de)

+49 30 394043 7313



**Bella Klug**

Junior Convention  
Sales Manager

[bek@moa.de](mailto:bek@moa.de)

+49 30 394043 7304



**Noah Vitiello**

Convention Sales  
Coordinator

[nvi@moa.de](mailto:nvi@moa.de)

+49 30 394043 7317

# Convention Team



**Amelie Goiny**  
Trainee Convention  
Sales & Events  
[ago@moa.de](mailto:ago@moa.de)  
+49 30 394043 7310



**Claudia Bielinski**  
Trainee Convention  
Sales & Events  
[cbi@moa.de](mailto:cbi@moa.de)  
+49 30 394043 7355



**Alex Herbst**  
Trainee Convention  
Sales & Events  
[alh@moa.de](mailto:alh@moa.de)  
+49 30 394043 7311



**Leonita Etehem**  
Praktikantin Convention  
Sales & Events  
[let@moa.de](mailto:let@moa.de)  
+49 30 394043 7314

**Hello,  
it's us!**

The MOA MEET Team

# Sales Team



**Teodora Todorova**  
Senior Sales Managerin  
[tto@moa.de](mailto:tto@moa.de)  
+49 30 39 40 43 7322



**Valeria Stenzel**  
Junior Sales Managerin  
[vst@moa.de](mailto:vst@moa.de)  
+49 30 39 40 43 7323



**Tahsin Schmiedke**  
Werkstudent Sales  
[tsc@moa.de](mailto:tsc@moa.de)  
+49 30 39 40 43 7325

# Hello, it's us!

The Sales Team



# we live conventions.

Secure great event conditions for your  
next event now.

[Our Eventlovers-Newsletter](#)

# Your WOW event location.

MOA CONNECTS

0 30 39 40 43 7301 | [moa.de](http://moa.de) | [meet@moa.de](mailto:meet@moa.de) | [moa.en/eventlovers](http://moa.en/eventlovers)

MOA  
MEET