



Old Smithy's Dizzle

BERLIN - FRIEDRICHSHAIN

Five fully equipped technical areas, a fully networked media system, a backyard garden with a fire pit.

ESSE 16

Conferences, Open Work Space,
Presentations, Workshops

DIZZLE'S HOME

Receptions, Fine Dining,
Workshops & Creative Meeting,
Theater Stage, Cinema,
Lounge Concerts

Old Loft

Banquets, Lectures, Presentations,
Workshops, large Dinners

sound SPACE

Record Release, Private Club,
Coworking Space

GARDEN

Get-Togethers, Refreshing Breaks,
Green Oasis in the City

Mainzer Straße 16 | 2. Backyard
10247 Berlin

Contact: +49 30 2577 1090 | info@osd.events
www.old-smithys-dizzle.com

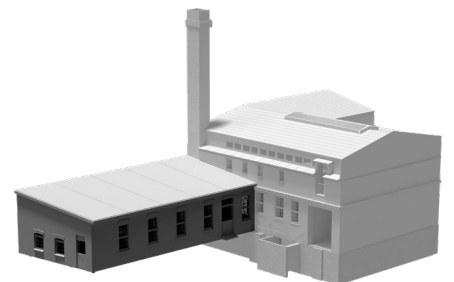


Dimensions: 1920 x 1200 pixel | 6,670 ANSI Lumen | 4 m diagonal

DIZZLE'S HOME

*Wood and
beautiful ironwork
for cosiness*

Size: 120 m² + 20 m²
| ground floor (direct access to Garden)
Capacity: up to 80 pax



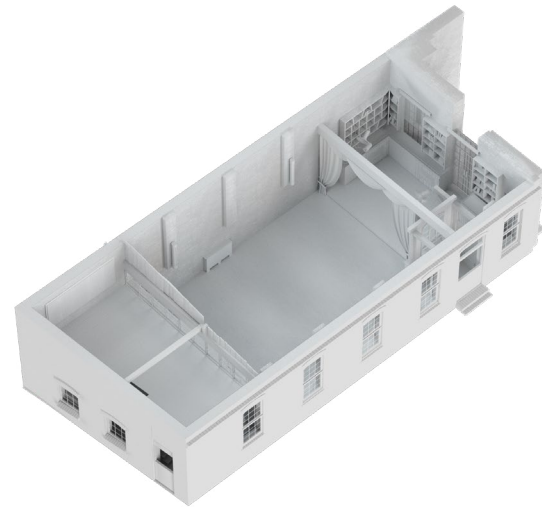
Old Smithy's Dizzle

Contact: +49 30 2577 1090 | info@osd.events
www.old-smithys-dizzle.com

Within the brick walls of the former blacksmith's shop pulsates the "heart" of Old Smithy's Dizzle, directly connected to the evergreen garden.

Lots of wood, beautiful steel art and countless indirect light sources provide cosiness and warmth in our "living room".

The eye-catcher is the noble green theatre curtain made of velvet, which makes the room smaller if necessary or creates a stage in a few easy steps.



The feel-good atmosphere for networking, get-together and dinner



Dimensions: 3 × 1.5 m | 1920 × 1080 pixel | 2,500 ANSI Lumen

FACTS

Equipment

- Sofa corner with 10 seats in the Séparée
- Library seating area (7 seats)
- Theatre stage incl. curtain (about 20 m²)
- Second level with smoking lounge (10 seats)

Sound

- Audio concept by K-Array as a four-point background sound system
- THX Klipsch 9.1. Surround sound
- Martion Audio HIFI sound as a horn-based 4-way system
- DJ console

Light

- Daylight
- Mercury vapour lamps in the sunlight spectrum
- Touchscreen-controlled LEDs (RGB)

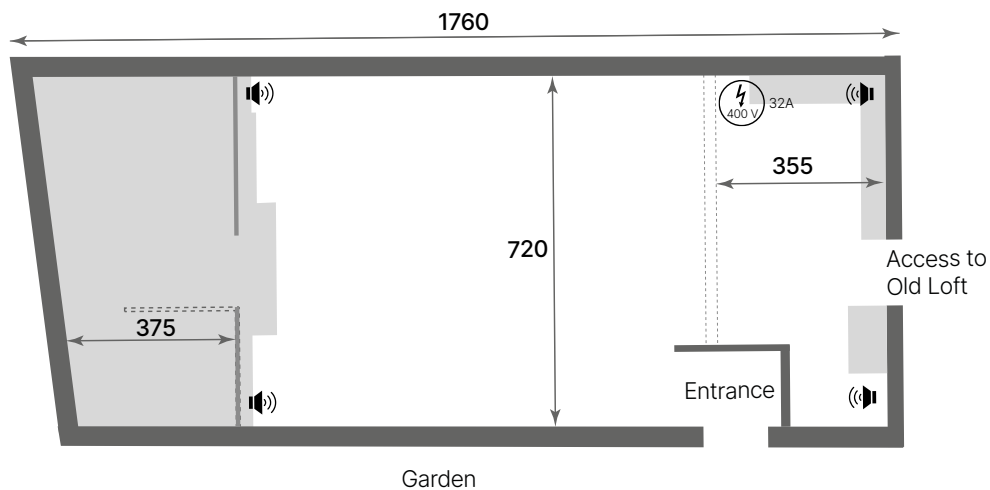
Media

- 1.000 Mbit/s high-speed fibre optic network
- 3-D cinema with LG CF3DA projector
- Integrated cinema screen in landscape format (4 m diagonal)
- Media wall (7.3 × 0.8 m)









Dimensions: 7.3 × 0.8 m | 3840 × 720 pixel | 7,000 ANSI Lumen

FLOOR PLAN



CAPACITY

Standing: 80 pax 
 Classroom: 35 pax 
 Rows: 70 pax 

U-shape: 30 pax 
 Block: 45 pax 
 Gala: 50 pax 



SPECIALS

Three different sound systems are installed in Dizzle's Home. Touchscreen-controlled LEDs can illuminate the entire room in addition to the mercury vapour lamps in the sunlight spectrum.

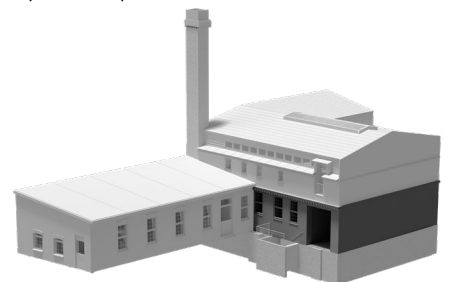
A cinema screen, incl. a theatre curtain, is integrated into the room. On the plateau, there is a 3-D cinema and an elongated media wall on which individual content can be played.



OLD LOFT

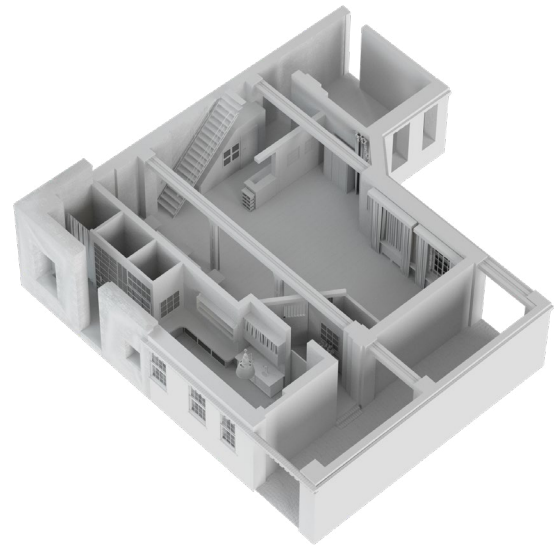
*Open space with
an industrial look*

Size: 120 m² | ground floor
Capacity: up to 80 pax

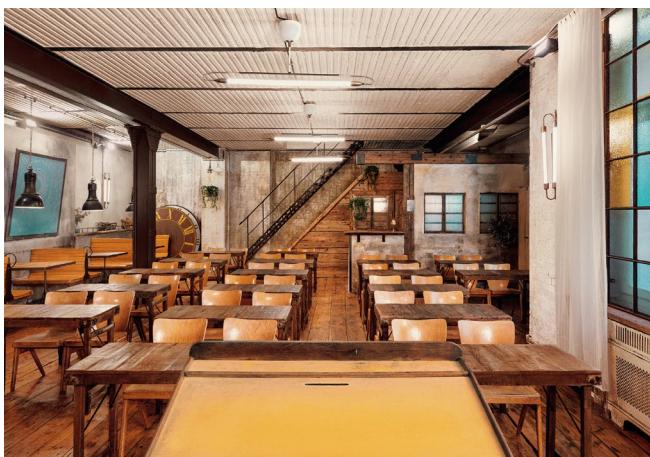


The typical Berlin factory floor character with oak floors and steel columns presents itself in the "belly" of the Dizzle.

Our Old Loft, often used as a dining room, is a great place to eat! Ideal for large dinners, as an additional workshop or presentation space, as a film studio or lounge.



Our chameleon room for workshops, as a back office or private restaurant



FACTS

Equipment

- 4 x old Berlin S-Bahn Séparées
- 4 x additional tables for S-Bahn
- 5 x round clock face tables
- Historic coloured window glazing
- Antique lectern

Sound

- K-array four-point sonication

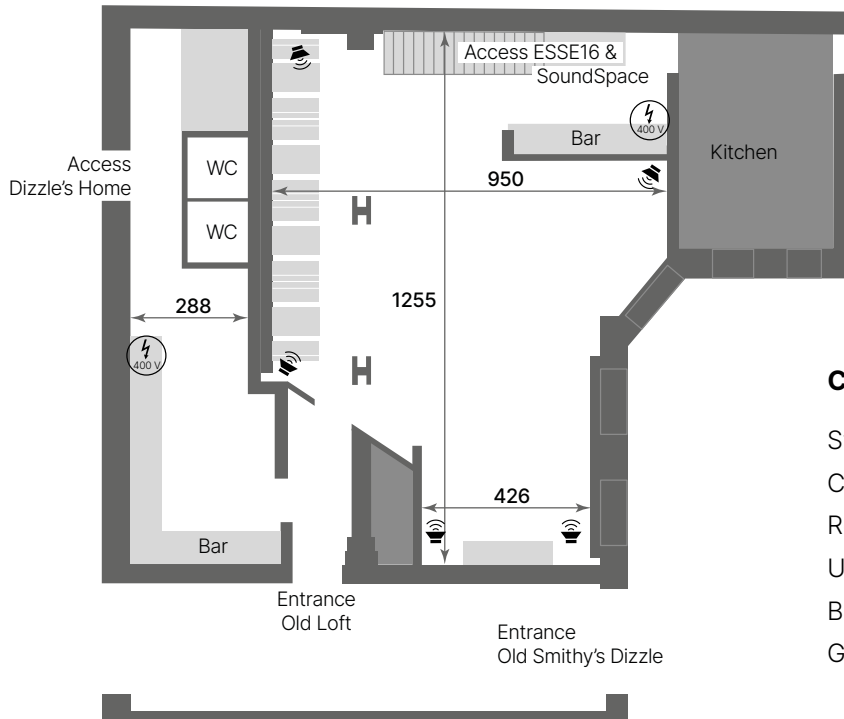
Light

- Daylight lamps
- Touchscreen-controlled LEDs (RGB)

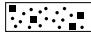

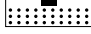
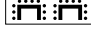


Media

- 1.000 Mbit/s high-speed fibre optic network

FLOOR PLAN



CAPACITY

Standing:	70 pax	
Classroom:	60 pax	
Rows:	80 pax	
U-shape:	35 pax	
Block:	30 pax	
Gala:	80 pax	

SPECIALS

The Old Loft is our multi-talent and the kitchen is directly adjacent. So it often makes sense to rent in addition to the Dizzle's Home or the ESSE16.

The historic window glazing creates a unique lighting atmosphere and the room can be additionally customised with LED lighting.

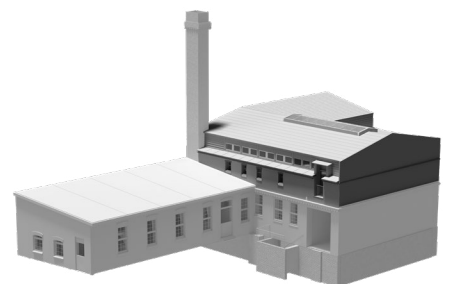




ESSE 16

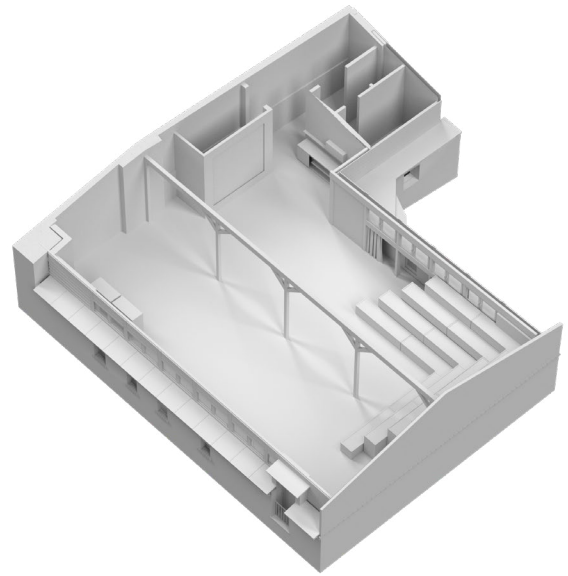
*Light-flooded
loft with a
view of the sky*

Size: 170 m² | first floor
Capacity: up to 120 pax



The open loft in the attic impresses with its high gable construction. Light wood fixtures meet poured concrete floors.

In the "head" of the Dizzle, the inner horizon immediately widens.



Light-flooded open space



FACTS

Equipment

- Modular grandstand
- Bistro and show-cooking area
- Pre-installed pinboard area (4m wide)
- Air-conditioning system

Sound

- Sonance audio system with six-point sound system

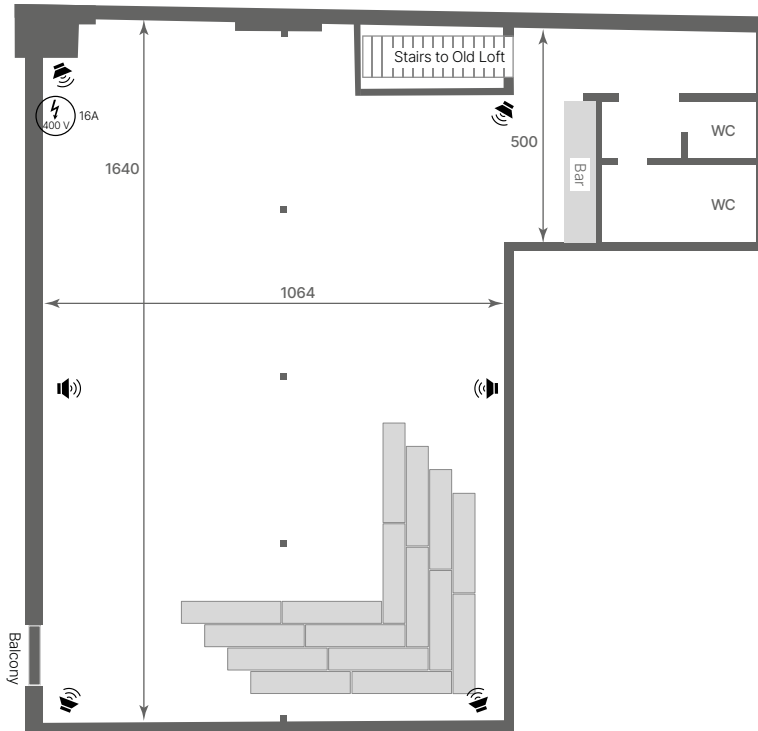
Light

- Flexible, controlled lighting system







Media

- Touchscreen 75" rollable on stand (with Click-share)
- Presentation panel 85" rollable on stand
- Mobile screen (5×4m) & projector (5,000 ANSI lumens)
- 1.000 Mbit/s high-speed fibre optic network

FLOOR PLAN



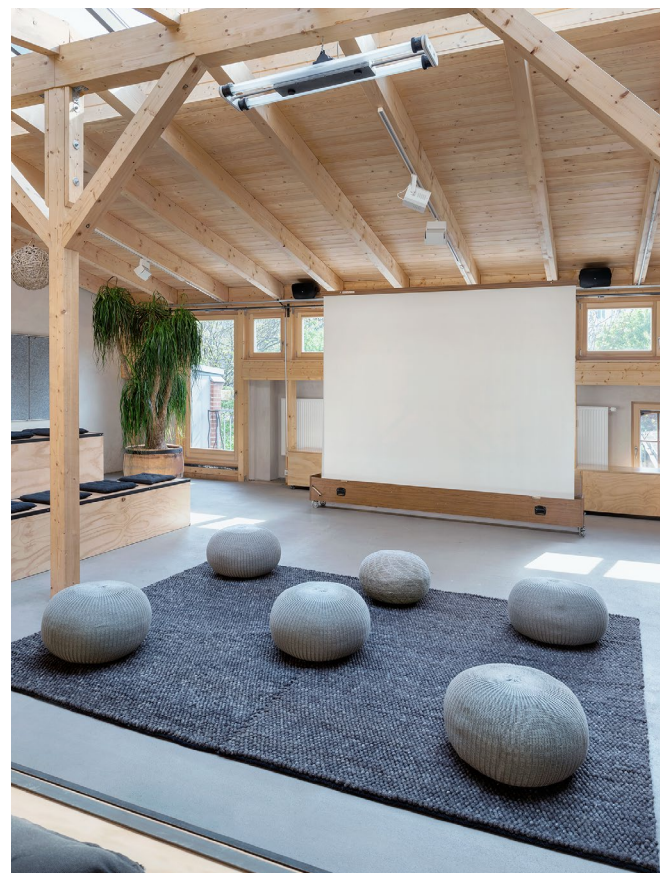
CAPACITY

Standing:	120 pax	
Classroom:	40 pax	
Rows:	120 pax	
U-shape:	35 pax	
Block:	80 pax	
Gala:	80 pax	

SPECIALS

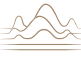
The ESSE16 is a flexible workspace: almost all elements in this space are rollable, and the stand system is modular. Workgroup furniture can also be used.

Two screens with a touch screen and click share, incl. a camera, are available.





Old Smithy's Dizzle
BERLIN - FRIEDRICHSHAIN

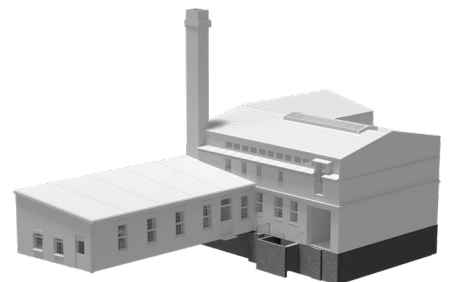
sound  SPACE



SOUNDSPACE

*Chalet charm with
integrated American Bar*

Size: 120 m² | souterrain
Capacity: up to 90 pax

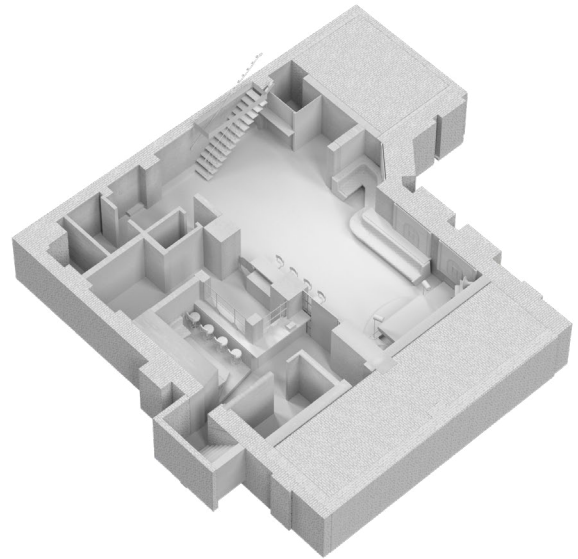


Old Smithy's Dizzle

Contact: +49 30 2577 1090 | info@osd.events
www.old-smithys-dizzle.com

The Soundspace features a mix of warm oak wood and brick construction and is equipped with high-tech equipment.

The arched windows of the Soundspace change colour to the rhythm of the music. Sofa interiors upholstered in forest green velvet invite you to relax and meditate. In its basement, the "soul" of the Dizzle beats to the deep rhythm of its heart.



Networked sound office and retreat with bar



FACTS

Equipment

- Sofa elements main room for 20 people
- Smoking lounge for 6 people
- American bar for 16-30 people
- Lowerable DJ booth & stage area
- Ventilation system and sound insulation

Sound

- High-end sound system with connected DJ desk

Light

- Touchscreen-controlled LEDs (RGB)
- Light change control integrated into arched windows (daylight illumination possible)

Media


- 16 workstations each with USB, Ethernet & 230 volt connection
- 1.000 Mbit/s high-speed fibre optic network

FLOOR PLAN



CAPACITY

Standing: 90 pax 

Sitting at bar: 16 pax 

Standing at bar: 30 pax

SPECIALS

The Soundspace is located in the basement and is completely soundproofed. The DJ booth can be lowered into the floor, creating a small stage area at the head of the room.

Cocktails are mixed right in front of you at the American Bar, and there is an enclosed smoking lounge with a fume cupboard at the back.



Old Smithy's Dizzle

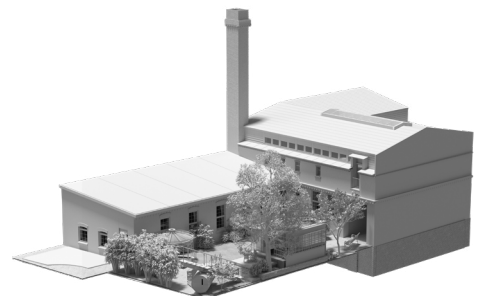
Contact: +49 30 2577 1090 | info@osd.events
www.old-smithys-dizzle.com



GARDEN

*Garden oasis with
waterfall and
covered fireplace*

Size: 200 m²
Capacity: up to 100 pax





Green refuge for relaxing and unwinding, for receptions or for a perfect barbecue

The wholly covered green "lung" nestles up against the Old Smithy's Dizzle with small terraces and seating areas. Wrought-iron seating sets invite you to linger.

The covered fireplace can also be used as a barbecue area.

A chat under the Mirabelle tree clears the head again.



FACTS

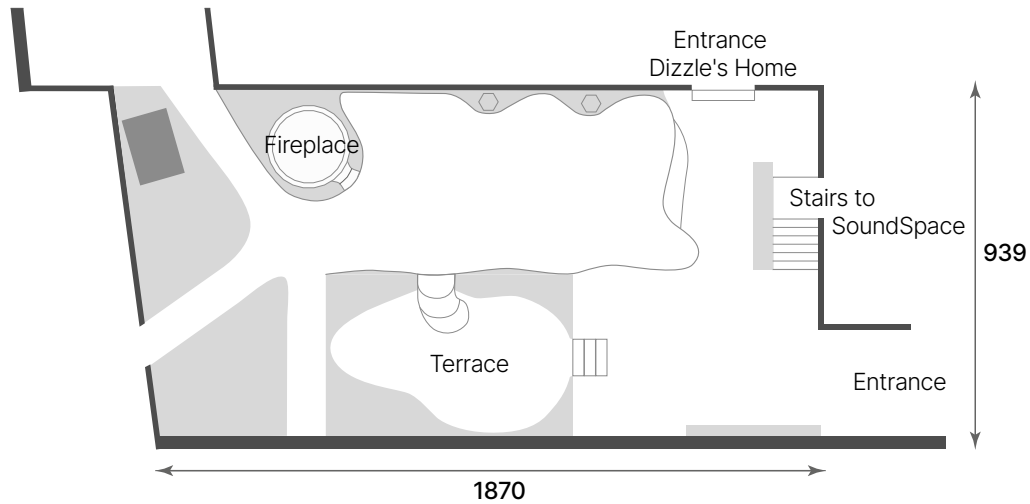
Equipment

- Covered fire and barbecue station
- Wrought-iron vintage seating
- Waterfall and pond


Sound

- Ambient sound system with Bose outdoor boxes

FLOOR PLAN



CAPACITY

Standing: 100 pax 

SPECIALS

The garden of Old Smithy's Dizzle is partly weather-protected. In addition, a sound barrier to the neighbouring courtyard not only ensures peace but also provides privacy.

The barbecue area has an integrated extractor in the glass roof so that up to 10 people can sit together comfortably.



Old Smithy's Dizzle

Contact: +49 30 2577 1090 | info@osd.events
www.old-smithys-dizzle.com



Old Smithy's Dizzle
BERLIN - FRIEDRICHSHAIN

*Which experience will now become
yours at our home?*

Mainzer Straße 16 | 2. Backyard
10247 Berlin

Contact: +49 30 2577 1090 | info@osd.events
www.old-smithys-dizzle.com