

KÜHNE LOGISTICS UNIVERSITY

## “SMALL EGG”

a small auditorium for 56 people



## Table Of Content



### Capacities

- area approx. 103 m<sup>2</sup>
- 56 fixed seats
  - upholstered folding seats, ascending seating



### Conference Technology

- guest WLAN
- power connections at the seats
- zoomrooms system: two cameras for speaker and audience
- Shure 360° ceiling microphone
- 2x fixed screens
- 2x preview monitors
- micro
- sound system
- presenter
- air conditioning system



### Accessibility

- barrier-free entrance on the ground floor
- barrier-free toilets
- barrier-free access to the first row of seats



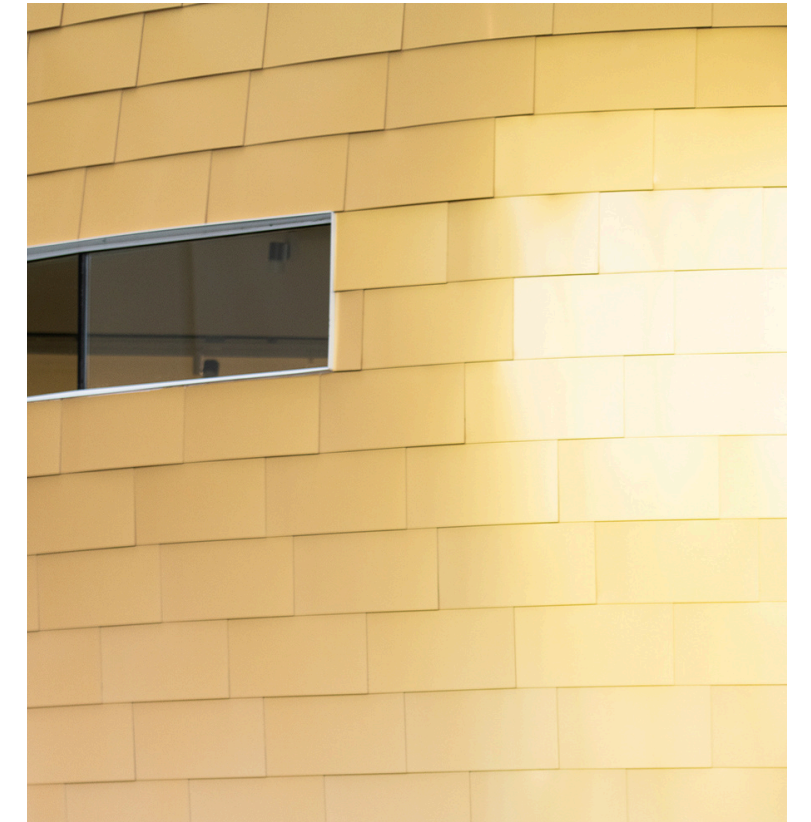
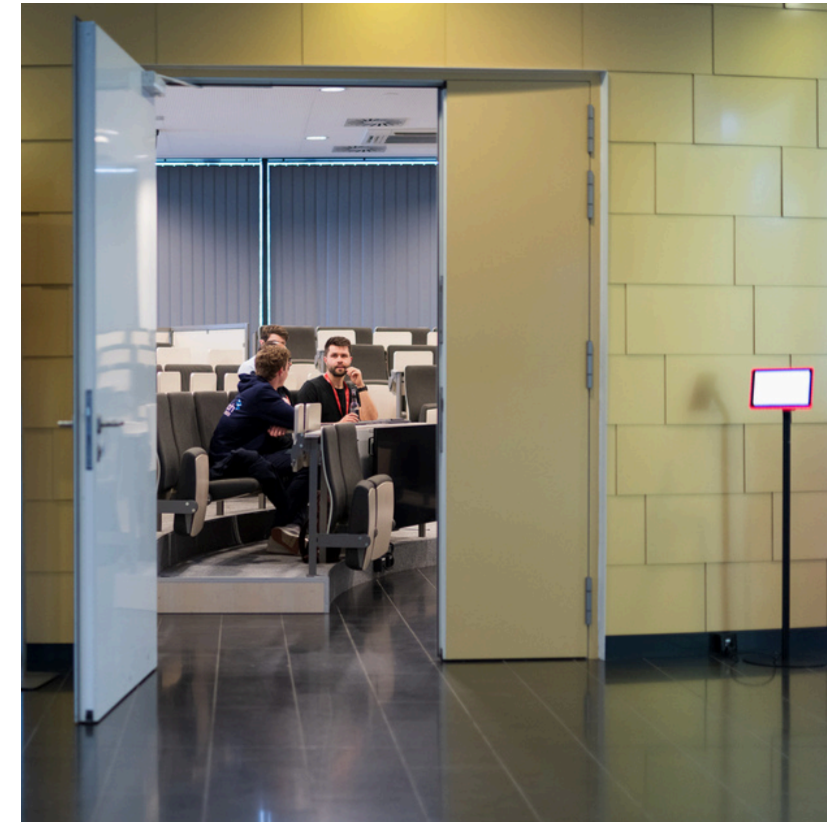
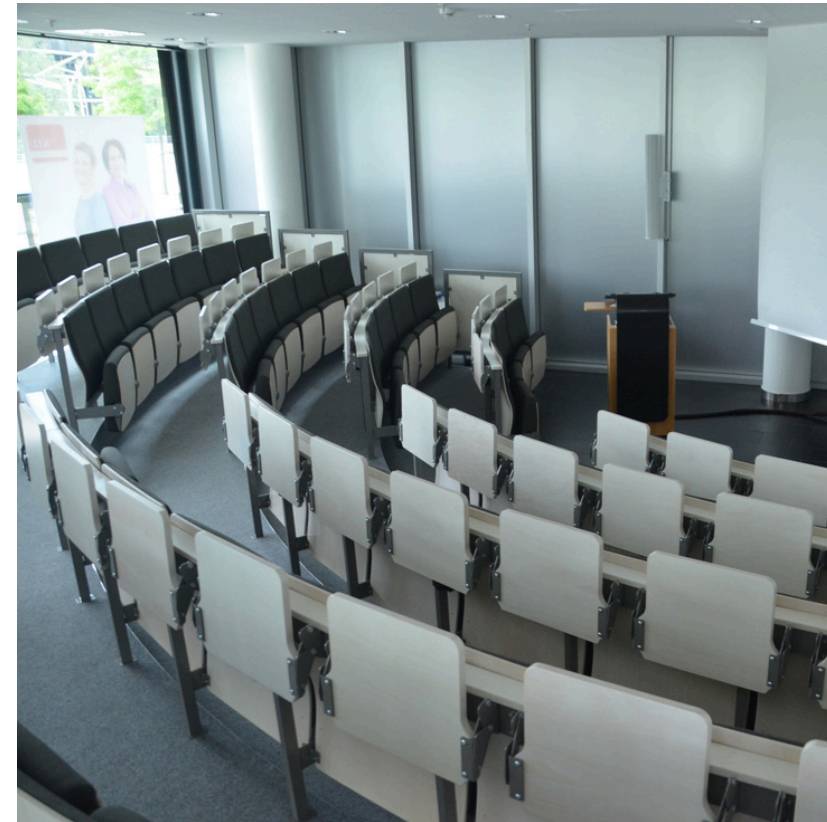
### Wardrobe

- cloakroom available
  - self-storage in the foyer

### Costs

- Small Egg € 1.000 (>4 hours)
- Small Egg € 650 (<4 hours)
  
- combination (Small Egg & Foyer) € 2.000 (>4 hours)
- combination (Small Egg & Foyer) € 1.300 (<4 hours)
  
- combination (Big & Small Egg & Foyer) € 4.000 (>4 hours)
- combination (Big & Small Egg & Foyer) € 2.600 (<4 hours)
  
- daily cleaning during the event € 27.24 per hour\*

# Impressions



## Our Benefits



Inhouse  
Catering



On Site  
Support



Modern  
Technology



Central  
Location



Beautiful  
Views

## About the KLU

The Kühne Logistics University (KLU) is a leading institution specializing in logistics and supply chain management, renowned for its cutting-edge research and exceptional academic programs. Located in the heart of the HafenCity, KLU provides a vibrant learning environment with state-of-the-art facilities.

Our rental rooms, situated within the KLU campus, offer modern amenities and a professional atmosphere, ideal for conferences, seminars, and business meetings. With stunning views of the harbor and easy access to public transportation, these rooms provide a perfect blend of convenience and inspiration for your events.

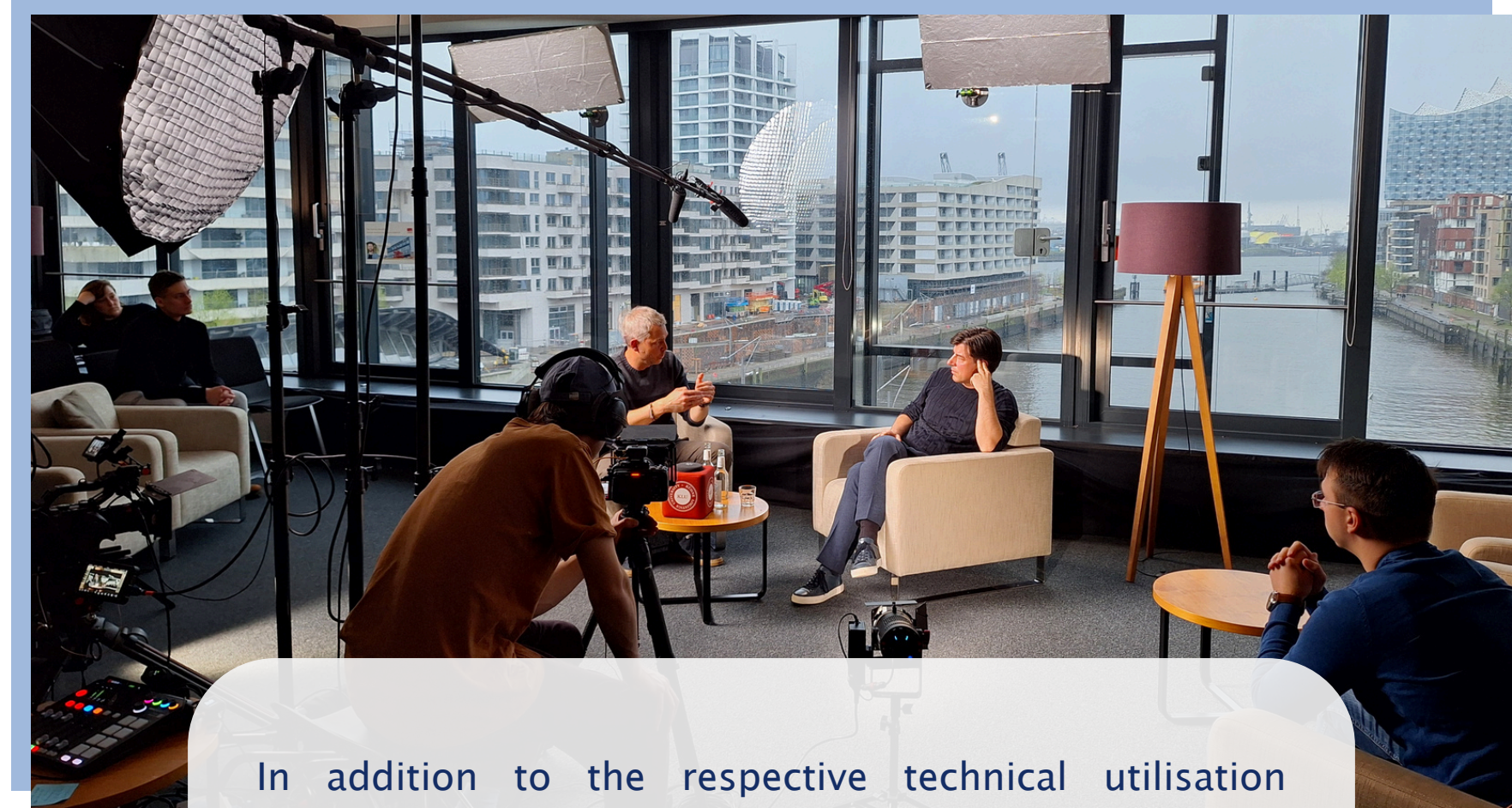


## Catering



With over 20 years of experience, Belle Etage Catering offers tailor-made catering solutions for events of all kinds. Belle Etage Catering attaches particular importance to quality, regionally sourced ingredients and an appealing presentation of the food. We recommend using our in-house caterer, but we are not obliged to do so.

## Technician



In addition to the respective technical utilisation options that the rooms offer, we also work together with a technician who can implement your individual ideas.

## Location

### HafenCity

Welcome to our exquisite rental space in the heart of the HafenCity, one of the most vibrant and modern districts in the city. Nestled along the picturesque waterfront, our room offers a unique blend of contemporary design and historical charm, making it the perfect venue for your next event.

With stunning views of the harbor and easy access to local amenities, this space is ideal for meetings, workshops, or a serene retreat. The bustling promenades, trendy cafes, and cultural landmarks are just steps away, providing an inspiring backdrop for any occasion. Enjoy the dynamic atmosphere of the HafenCity while experiencing the comfort and convenience of our rental room.

Großer Grasbrook 17, 20457 Hamburg  
[click here for directions](#)



## INTERESTED? SET SAIL FOR KLU @HAFENCITY



**Kathrin Storm**

**Astrid Büchner**

 [rental@klu.org](mailto:rental@klu.org)

 **Großer Grasbrook 17**  
**20457 Hamburg**



# General terms and conditions

---

## § 1 Conclusion of contract

The tenant receives a booking confirmation for the booked service and the rent for the premises. This makes the booking binding. All additional services booked, such as cleaning flat rate, technician, etc. will be invoiced after the event. The caterer will be invoiced directly by the hirer.

## § 2 Additional services

The Lessor shall provide the Lessee with the technical equipment available in the event rooms free of charge, without this being part of the rental object. The Lessor does not guarantee that the technical equipment available in the seminar rooms is compatible with the IT technology brought in by the Lessee.

## § 3 Cancellation

- up to 30 days before the event: 100% cancellation option
- up to 14 days: 50% refund
- up to 7 days: 25% refund
- from 2 days before the event: no refund possible

## § 4 Material defects, warranty, liability

The Hirer shall be liable in accordance with the statutory provisions and contractual agreements for damage to property and personal injury, including any consequential damage (financial loss) caused by him, his authorised representatives and visitors during the rental period. The hirer shall indemnify the lessor against all claims for damages that may be made by third parties in connection with the event. The lessor accepts no liability for items brought in by the lessee, his authorised representatives and visitors. Claims for damages by the hirer are excluded. The lessor shall only be liable for damage caused by the defective condition of the rented property or by culpable breach of the obligations assumed by the lessor. The lessor shall only be liable for the failure of any equipment and malfunctions or other events that impair the use of the rented property in the event of wilful intent or gross negligence.

## § 5 Final provisions

The contract shall remain binding in its remaining parts even if individual points are legally invalid. The ineffective points shall be replaced by the statutory provisions, where applicable