

THE SKY LOBBY

WITH SKY LOUNGE WEST & EAST

TOP FLOOR



EVENT TYPE

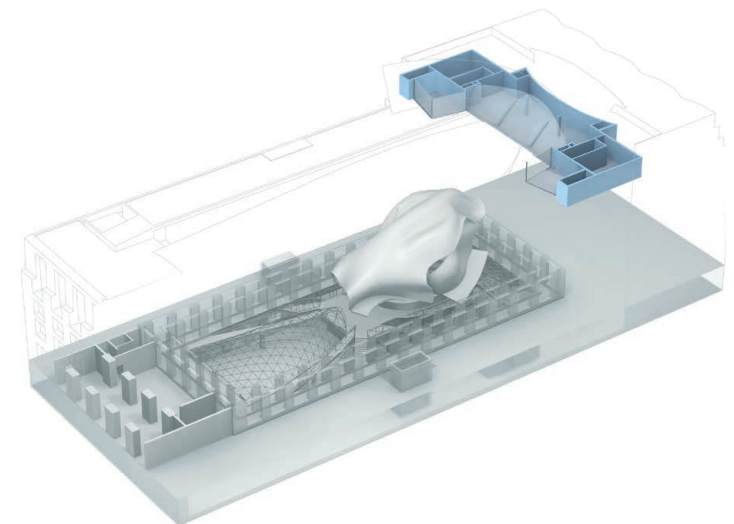
- » receptions
- » dinner
- » workshops
- » exhibitions
- » presentations
- » conferences
- » film set

INTERIOR & FURNISHING

- » open, expansive atmosphere on the 6th floor
- » direct daylight, glass front
- » view of the building's Atrium and the rooftops of Berlin
- » at eye-level with the Quadriga on the Brandenburg Gate and the dome of the Reichstag building
- » fully air-conditioned and ventilated
- » separate cloakroom and toilets

TECHNOLOGY & EQUIPMENT

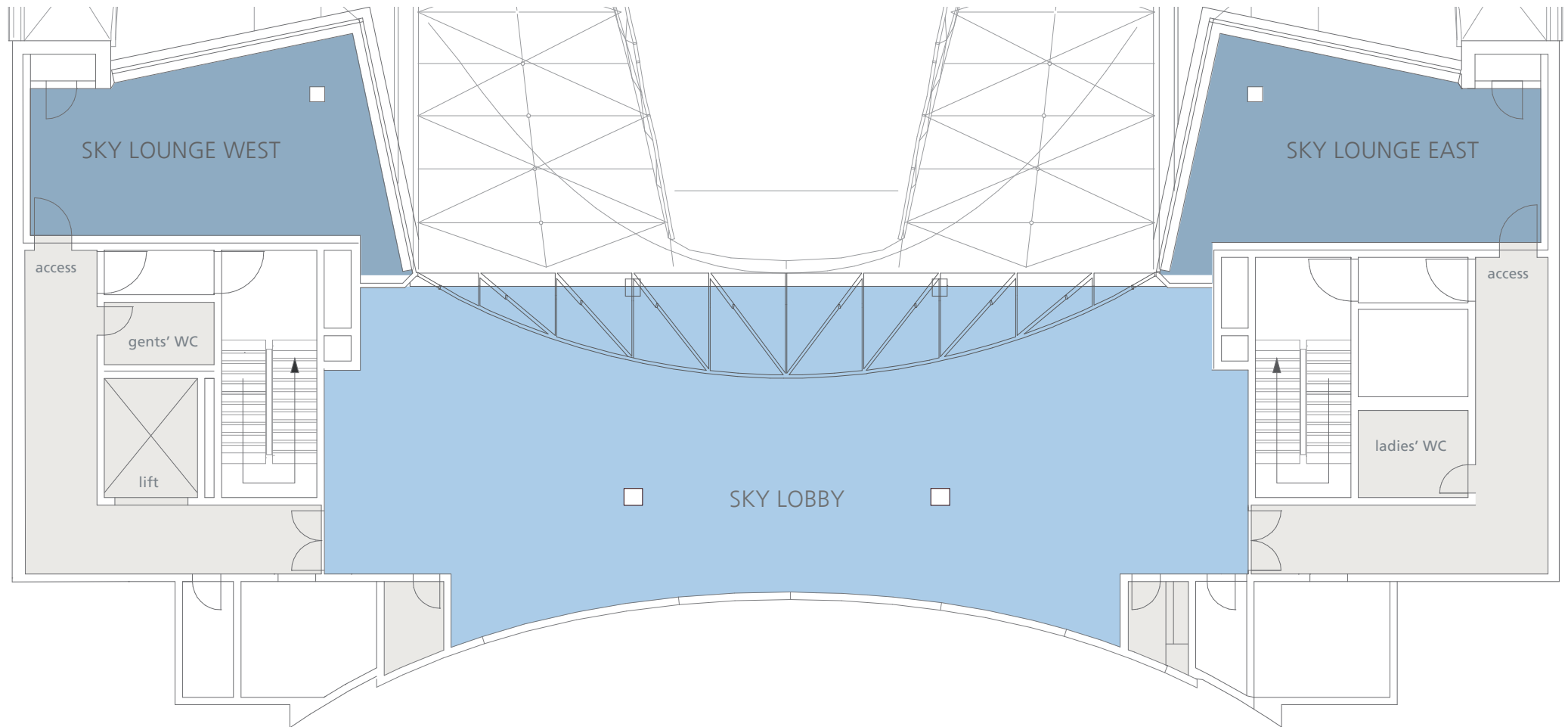
- » coloured interior lighting
- » powered adjustable spotlights
- » WiFi access available
- » power connections 220 + 380 V
- » technical management provided by AXICA
- » technical cooperation with event production experts





THE SKY LOBBY WITH SKY LOUNGE WEST & EAST | TOP FLOOR

M 1:120



DIMENSIONS SKY LOBBY	
total area	204 m ²
length	24,80 m
width	8,14 - 9,65 m
height	4,35 - 5,59 m

SEATING CAPACITY SKY LOBBY		
classroom		40 delegates
theatre		80 delegates
dinner/buffet		50 delegates
reception		80 delegates

DIMENSIONS SKY LOUNGE	
total area	46 m ²
length	9,00 - 10,00 m
width	4,00 - 5,80 m
height	3,00 m

CAPACITY SKY LOUNGE		
boardroom		18 delegates
theatre		25 delegates
dinner		12 delegates
reception		20 delegates