

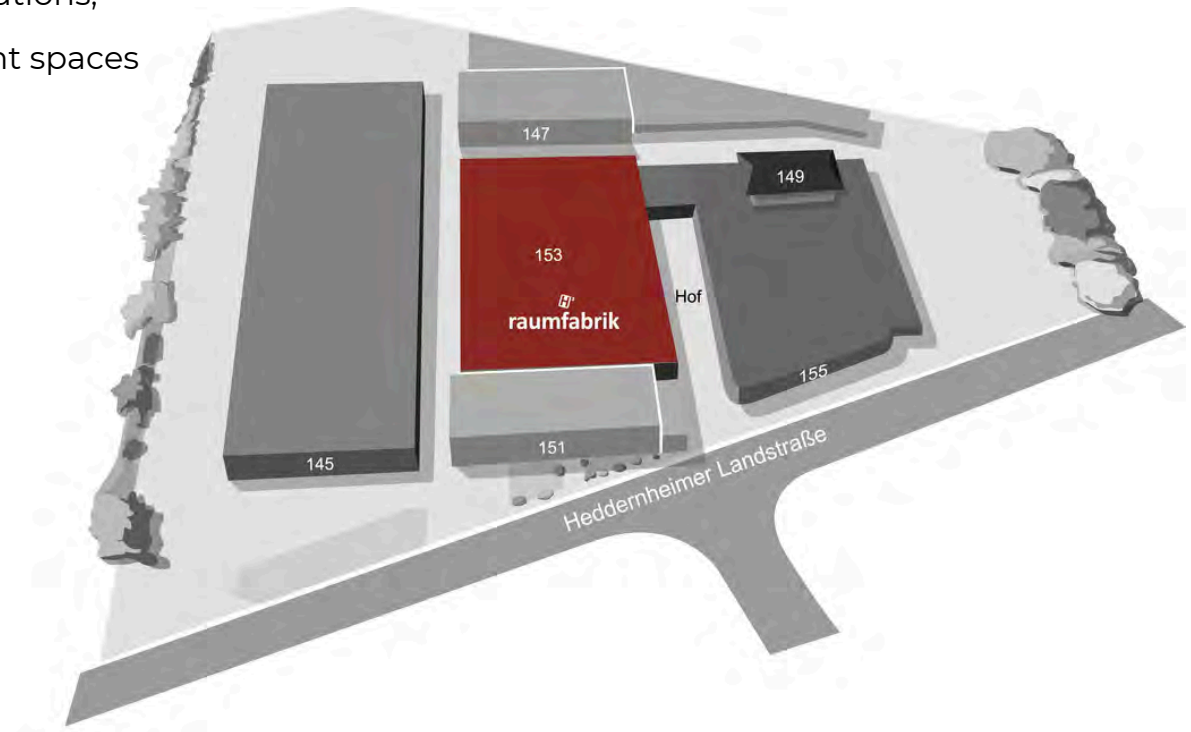


raumfabrik
freiraum für ideen



raumfabrik Frankfurt

The raumfabrik Frankfurt, a former metalware manufacturing hall from the 1960s, is located within the premises of the Heddernheimer Höfe. This is an area spanning over 11,000 sqm in the northwest of Frankfurt, offering a diverse array of art, culture, and commercial spaces. Educational institutions, artists, craftspeople, musicians, along with the event spaces of raumfabrik Frankfurt, collectively make the Heddernheimer Höfe a cultural hub within the neighborhood of Heddernheim.



Our history

1960

A former factory

The Heddernheimer Metalware Factory is constructing the factory building for the production of household goods.

1973

Use as a warehouse

Production in Heddernheim ceased in the 1970s, and the factory was subsequently rented out as a warehouse.

2014

A space for creative minds

The Heddernheimer Höfe are established as a district for art, culture, and commerce.

2019

Opening of the raumfabrik Frankfurt

The event hall opened in April 2019 and plans expansions with the addition of a bistro & catering service.

A flexible location

The raumfabrik Frankfurt, spanning over 2,100 sqm, is situated at the heart of the Heddernheimer Höfe complex. It serves as an event venue featuring 6 separate event spaces along with service areas. These diverse spaces, including a secluded courtyard, are available for a wide range of events. raumfabrik Frankfurt stands out as the premier location for exclusive events, ranging from workshops and corporate gatherings to exhibitions and product launches, as well as film and photo productions

At first glance

- 750 sqm of barrier-free, drivable former factory hall
- Ceiling height of 9 meters
- 5 additional rooms ranging from 70 square meters to 275 square meters, suitable for various purposes such as back-office spaces
- Large adjacent courtyard (280 sqm)
- Walls suitable for projections
- Capability to host a wide range of event formats
- On-site technical support partner
- Easily accessible from Frankfurt city center by car within 15 minutes
- Direct connection to the city center via the U1/U9 subway lines (20 min.)



Floor plan

Preparation Room Cateringküche

- Floorspace 102 m²
- Separate access for delivery

Workshop Room Kreativwerkstatt

- Floorspace 102 m²
- Separate access for delivery

Event Space raumfabrik

- Ceiling height 9 meters
- Floorspace 387 m²

Workshop Room Atelier

- Floorspace 275 m²
- Access to the first floor

Toilets (barrier-free)

Event Space raumfabrik

- Ceiling height 3 meters
- Floorspace 285 m²

Event Space raumfabrik

- Ceiling height 3 meters
- Floorspace 76 m²

Toilets

Bistro

- Floorspace 115 m²
- Direct access from the courtyard

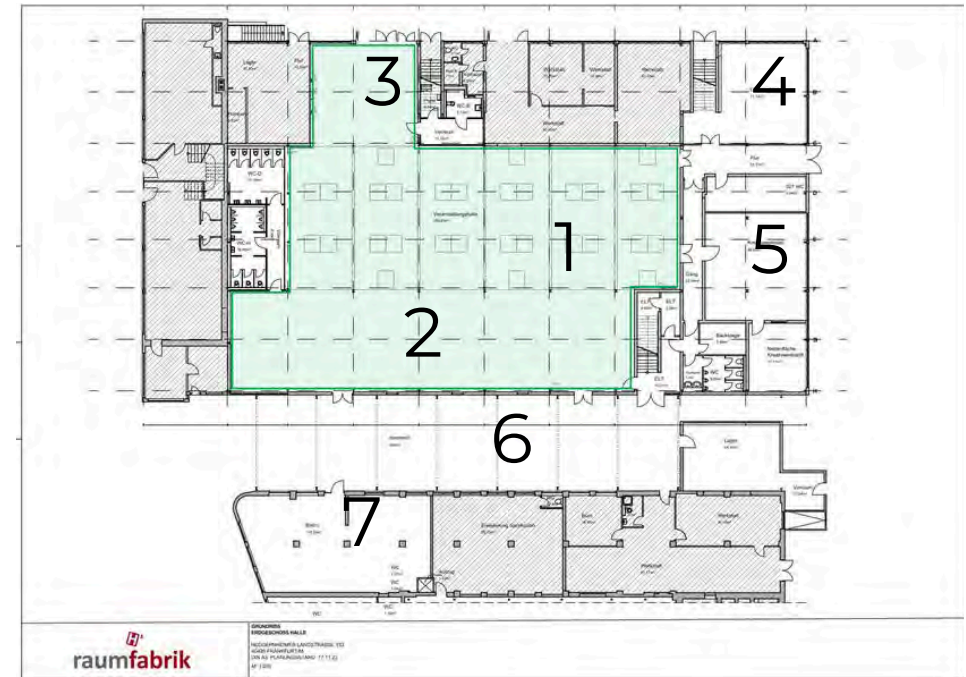


Dimensions and square metres

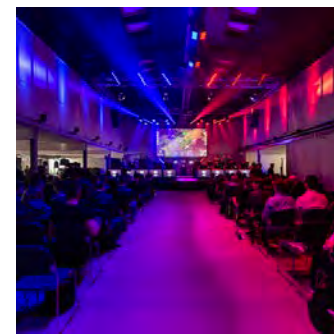
	Length (m)	Width (m)	Hight (m)	(Floorspace sqm)
Hall raumfabrik (total floorspace)				748
Central aisle	32,00	11,80	9,00	387
Large aisle (right)	33,50	8,50	3,00	285
Small aisle (left)	8,90	8,50	3,00	76
Atelier	32,50	8,36	bis zu 7,00	272
Courtyard	35,00	8,00		280
Cateringküche				70
Kreativwerkstatt				75+27
Bistro				115

Hall raumfabrik

The raumfabrik hall offers ample space for various event formats, totaling 750 sqm. Divided into three sections, alongside the central aisle measuring 387 sqm with a ceiling height of 9 meters, there are two smaller side aisles. These areas are 285 sqm and 76 sqm respectively, with a ceiling height of 3 meters. These diverse spaces are ideal for setting up amenities such as cloakrooms, catering areas, or lounges. For the easy transportation of materials and setups, there is a ground-level gate on the side of the event hall, suitable for vehicles. Notably, the hall benefits from generous natural light; however, it's also possible to fully darken the space without much effort.



- 1 Central aisle
- 2 Large aisle
- 3 Small aisle
- 4 Cateringküche
- 5 Kreativwerkstatt
- 6 Courtyard
- 7 Bistro



Hall raumfabrik

Your benefits



Barrier-free event spaces on the ground floor



Lighting and sound equipment can be booked through our local technical partner



Internet/Wi-Fi (redundant system)



Good public transport connections



Additional backstage rooms on the ground floor and first floor



Separate room for catering preparation



13 high-power electrical connections



Blackout option for the roof and side windows



14 hanging points at 7 kN and 4 hanging points at 1.8 kN



4 entrances on the ground floor including a large gate (3.50 meters wide and 2.84 meters high; suitable for vehicle entry)

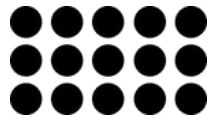


Polished concrete floor

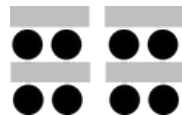


Radiators and heating pipes, warmth circulated by ceiling fans

Seating arrangements



Theater
460 people



Classroom
400 people



U-Shape
200 people



Boardroom
530 people



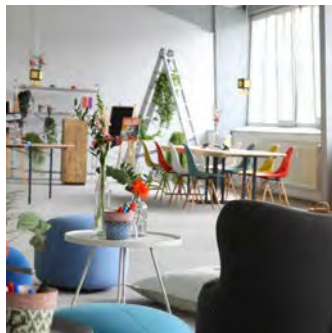
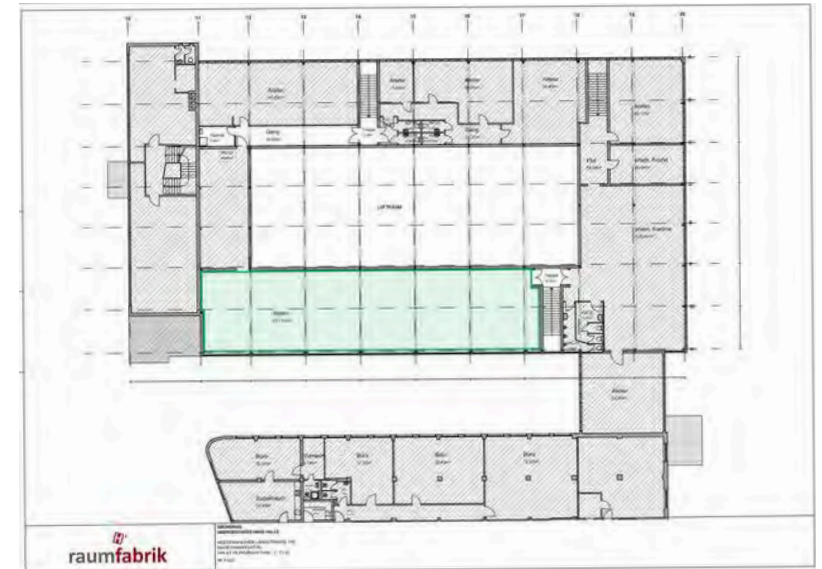
Baquet
430 people



Cocktail
600 people

Atelier

On the first floor above the raumfabrik hall, there is an additional space well-suited for exhibitions, smaller workshops, or ancillary events. This room is separated from the rest of the raumfabrik hall and can be accessed via a staircase located at the rear end of the event hall. With a size of 285 sqm, it can accommodate seating for up to 80 people.



Atelier

Your benefits



Lighting and sound equipment can be booked through our local technical partner



Internet/Wi-Fi (redundant system)



Polished concrete floor



Optional catering services available



Good public transport connections



Well-suited for photo and film shoots due to high ceilings

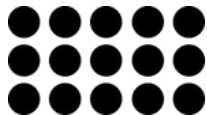


Hybrid events easily facilitated

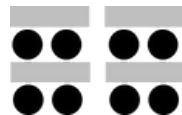


Additional backstage rooms on the ground floor

Seating arrangements



Theater
80 people



Classroom
40 people



U-Shape
35 people



Boardroom
60 people



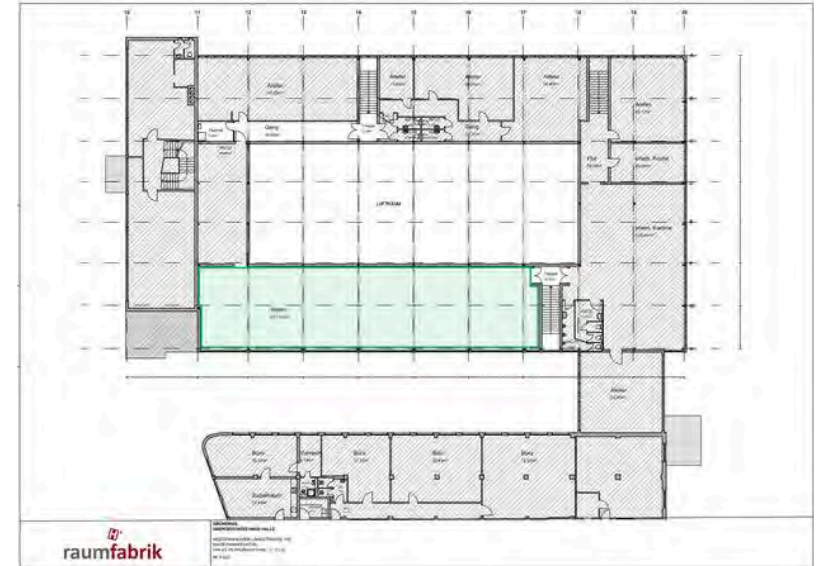
Baquet
50 people



Cocktail
100 people

Courtyard

Our courtyard is situated directly adjacent to the event hall, providing space for receptions or outdoor breaks. Spanning 280 sqm, the courtyard features old metal pillars, adding to its unique industrial character. You are welcome to utilize the courtyard as an entrance area as well, as the entrance door to the event hall opens onto the courtyard.



Courtyard

Your benefits



Located directly between
the hall and bistro



Hanging facilities available

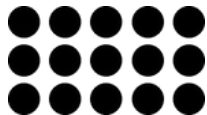


Internet/Wi-Fi (redundant
system)

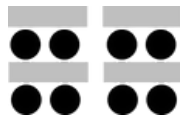


Shade provided by
sunshades

Seating arrangements



Theater
400 people



Classroom
150 people



U-Shape
200 people



Boardroom
350 people



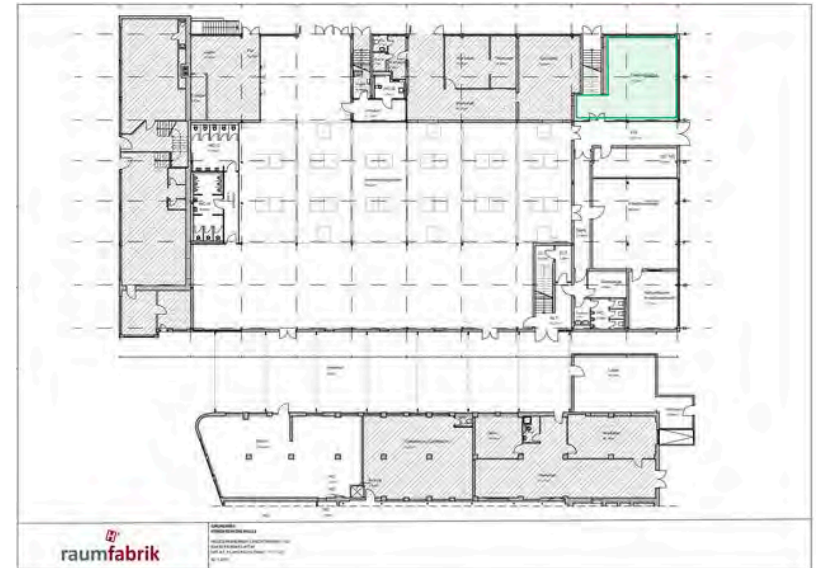
Baquet
250 people



Cocktail
600 people

Cateringküche

Behind the raumfabrik hall is the Cateringküche, spanning 71 sqm. This area is separated from the rest of the premises and features 4 high-power electrical and water connections. The location of the Cateringküche ensures short distances to both the raumfabrik and the Kreativwerkstatt. Deliveries are made through a separate entrance, ensuring that events in the raumfabrik hall remain undisturbed.



Your benefits



4 high-power and 19 standard electrical outlets



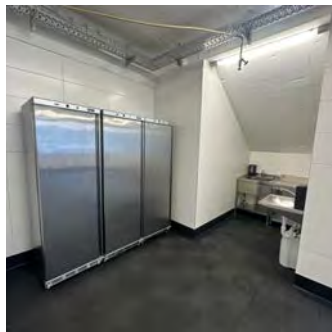
4 water connections



Private entrance

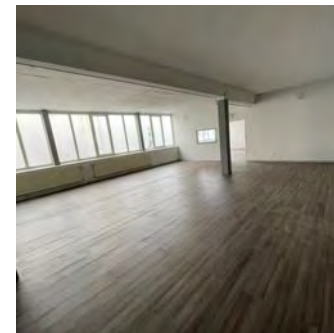
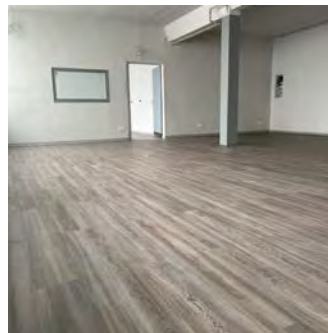
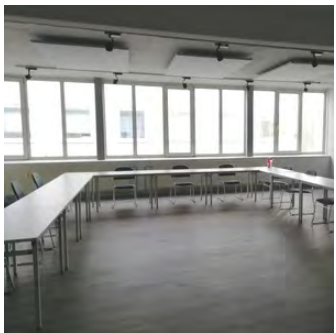
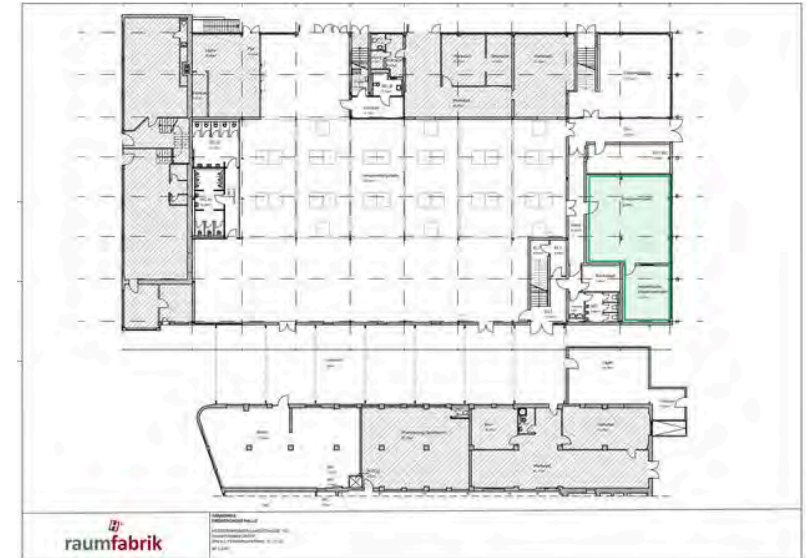


Short distances to the hall and the Kreativwerkstatt



Kreativwerkstatt

Located in the rear part of the raumfabrik hall is the Kreativwerkstatt, spanning 75 sqm. Adjacent to it is a small additional area of 27 sqm. The total of 102 sqm can be utilized, for example, for workshops or as back-office space. One of the key advantages for users is that this area has a separate entrance and can also be rented individually.



Kreativwerkstatt

Your benefits



Lighting and sound equipment can be booked through our local technical partner



Internet/Wi-Fi (redundant system)



Barrier-free event space on the ground floor



Optional catering services available



Good public transport connections



High-quality flooring

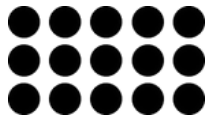


Private entrance

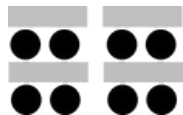


280 sqm courtyard

Seating arrangements



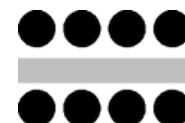
Theater
60 people



Classroom
36 people



U-Shape
10 people



Boardroom
60 people



Baquet
40 people



Cocktail
38 people

Bistro

The bistro, spanning 115 sqm, is centrally located within the Heddernheimer Höfe premises and directly opposite the raumfabrik hall, separated only by a courtyard that can also be utilized. It can be rented separately or in addition to other spaces. The bistro can serve as a breakout area, for example, or by arrangement, as a more traditional dining venue, given its kitchen's extensive equipment, capable of preparing fine menus.



Your benefits



Lighting and sound equipment can be booked through our local technical partner



Internet/Wi-Fi (redundant system)



Professionally and comprehensively equipped kitchen



Immediate proximity to the event hall and other spaces



Ground floor plan



Floor plan first floor



Our partners

raumfabrik Frankfurt collaborates with partners in the catering, technical, and equipment sectors, distinguished by years of experience. Depending on the requirements, the initial contact or the entire process can be managed through raumfabrik Frankfurt. Of course, clients are also welcome to book their own service providers.



Manuel Hoefel is our bistro operator and catering partner. He is a trained chef in classical cuisine. His passion lies in modern, creative crossover cuisine as well as reinterpreting classics. Whether it's a flying buffet, grill event, live cooking, or plated dishes - Manuel Hoefel will cater to your preferences and desires.



TASTE OF NOW collaborates with a variety of talented chefs and personalities from the gastronomy industry, each bringing their own unique styles to events. This allows for the culinary design of an event to be tailored precisely to the preferences, guest profile, and budget of each individual client.



FLOW THE KITCHEN's strength lies in its comprehensive, high-performance portfolio of in-house offerings, including culinary options, equipment, decoration, bar services, live cooking, service, and much more. Products and suppliers are sourced locally. Their passion for good food is reflected in the modern, sophisticated, and sustainable culinary approach of freshly prepared dishes.

Our partners

raumfabrik Frankfurt collaborates with partners in the catering, technical, and equipment sectors, distinguished by years of experience. Depending on the requirements, the initial contact or the entire process can be managed through raumfabrik Frankfurt. Of course, clients are also welcome to book their own service providers.



Regardless of location or time, FR Catering is a reliable and competent partner. They successfully navigate the demands of diverse clients and anticipate every detail, knowing they only have one event to prove themselves as the right partner.



Our technical partner, sound for friends, is also located on the premises of the Heddernheimer Höfe. Their warehouse holds everything necessary for the successful execution of an event, ensuring short distances and convenience.



As event outfitters, Party Rent takes care of the staging of an event. This involves creating the atmosphere as well as the personalized concept that underpins it and meaningfully underscores the communication goals. The product portfolio includes event equipment such as furniture, tableware, and kitchen appliances, as well as decorations, carpets, and flooring options.

Hotels nearby

relexa hotel Frankfurt/Main

Lurgiallee 2, 60439 Frankfurt

Phone: +49 69 95778 0

Email: frankfurt.main@relexa-hotel.de

www.relexa-hotel-frankfurt.de

Distance: 1 km

Accessibility: 15 minutes by foot

Number of rooms: 163

elaya hotel frankfurt oberursel

Zimmersmühlenweg 35, 61440

Oberursel (Taunus)

Phone: +49 6171 5000

Email: frankfurt-oberursel@elaya-hotels.com

www.elaya-hotels.com/frankfurt-oberursel

Distance: 6 km

Accessibility: 10 minutes by car

Number of rooms: 220

Trip inn Frankfurt Nordwestzentrum

Walter -Möller-Platz 2, 60439 Frankfurt

Phone: + 49 69 95 11 47 20

Email: nwz@tripinn-hotels.com

www.tripinn-hotels.com/nwz

Distance: 1 km

Accessibility: 15 minutes by foot

Number of rooms: 93

B&B HOTEL Frankfurt-Nord

Heinrich-Lanz-Allee 3 , 60437 Frankfurt

Phone: +49 69 950904-0

Email: frankfurt-nord@hotelbb.com

www.hotel-bb.com/de/hotel/frankfurt-nord

Distance: 7 km

Accessibility: 30 minutes by U9/12
minutes by car

Hotel Heddernheimer Hof

Heddernheimer Landstr. 82, 60439
Frankfurt

Phone: +49 69 58 33 44

Email: info@heddernheimerhof.de

www.heddernheimerhof.eu/de

Distance: 600 m

Accessibility: 10 minutes by foot

Dorint Hotel Frankfurt/Oberursel

Königsteiner Straße 29, 61440
Oberursel

Phone: +49 6171 2769-0

Email: info.oberursel@dorint.com
www.hotel-frankfurt-oberursel.dorint.com/de

Distance: 10 km

Accessibility: 20 minutes by car
Number of rooms: 140

How to find us

Navigation Address

Hedderheimer Landstraße 155, 60439 Frankfurt am Main

Distances

- 15 minutes - Frankfurt city center
- 15 minutes - Frankfurt Airport
- 12 minutes - Eschborn
- 5 minutes - Merton Quarter

By Car

You can reach us by car via the A3, A5, and A66 motorways. We recommend arriving by public transportation.

By Bus and Train

- U1 + U9 Hedderheimer Landstraße station (1 minute walk)
- U3 + U8 Wiesenau station (10 minutes walk)
- Bus 29 + N3 Oberschelder Weg station (5 minutes walk)

Parking

- Limited number of parking spaces on-site
- Access with turning circle for buses and trucks



Contact us

Operating company

raumfabrik Frankfurt GmbH
Hedderheimer Landstraße 155
60439 Frankfurt am Main
info@raumfabrik-frankfurt.com
Phone: +49 (0) 175 22 55 012

Contact

Managing Director: Nicole Harloff
Mobil: +49 (0) 172 429 1105
Email: n.harloff@raumfabrik-frankfurt.com

