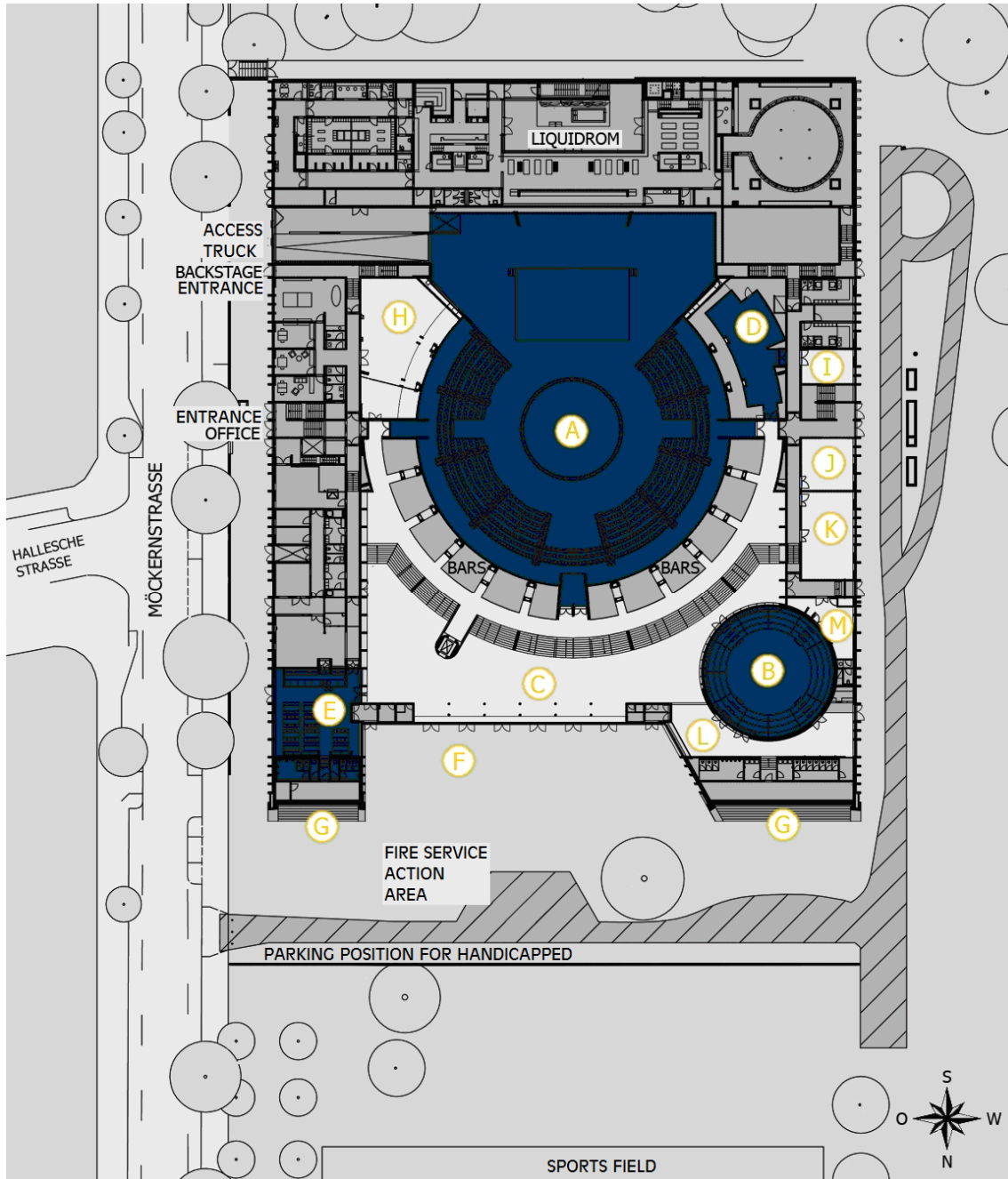




## CONTENTS

LAYOUT		3
ARENAS – DESCRIPTION AND TECHNICAL INFORMATION		
A	Big Arena	4
	Description	
	Technical equipment	5
	Rigging points	6
	Seating options	
	Option A1 & A2 – Full seating	7
	Option A3 & A4 – Standing room only	8
	Option A5 & A6 – Gala dinner	9
	Option A7 & A8 – Conference	10
	Option A9 – Reception	11
	Option A10 – Sport with special stands	11
	Option A11 – Boxing, wrestling	12
	Option A12 – Circus seating	12
	Block overview full seating/ standing room options	13
B	Small Arena	14
	Description	
	Technical equipment/ Rigging points	15
	Seating options	
	Option B1 – Full seating	16
	Option B2 – Standing room	16
C	Foyer	17
	Description/ Technical equipment	
D	Lounge	18
	Description/ Technical equipment	
E	Restaurant	19
	Equipment	
F	Forecourt / outdoor area	20
	Description/ Technical equipment	
G	Roof terrace	21
	Description/ Technical equipment	
H	Backstage East	22
	Description/ Technical equipment	
I	Backstage West – Dressing Room 1	23
	Description/ Technical equipment	
J	Backstage West - Catering, Dressing Room 2	24
	Description/ Technical equipment	
SECURITY POSITIONS		25
SERVICE PARTNERS		26
	Catering / TSE AG / B.E.S.T. Veranstaltungsdienste GmbH / GRG Services Berlin	
	Brandschutzbüro und Dienstleistungen Behring GmbH	
INFORMATION FOR EVENT ORGANISERS		27
INFRASTRUCTURE		29
TRANSPORT ACCESS		30
CONTACT		31
LAYOUT AND OVERVIEWS		32



- |   |              |   |                       |
|---|--------------|---|-----------------------|
| A | BIG ARENA    | H | BACKSTAGE EAST        |
| B | SMALL ARENA  | I | DRESSING ROOM 1       |
| C | FOYER        | J | DRESSING ROOM 2       |
| D | LOUNGE       | K | CATERING              |
| E | RESTAURANT   | L | FOYER SMALL ARENA     |
| F | FORECOURT    | M | BACKSTAGE SMALL ARENA |
| G | ROOF TERRACE |   |                       |

The Liquidrom does not belong to Tempodrom premises.

## A BIG ARENA

### DESCRIPTION

The focus of the Tempodrom is the Big Arena. This can be entered from both ground and basement levels and is connected to the outdoor area via the roof terrace.

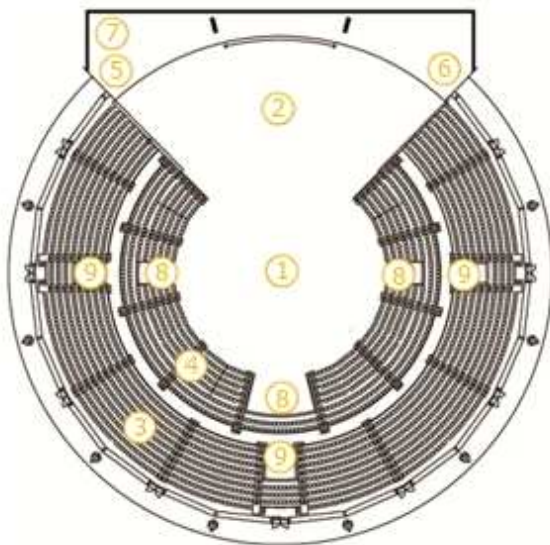
The circus ring with a diameter of 25 m can be enlarged through retraction of the stands by 8.5 m to 33.5 m.

Due to its adjustable size, the Big Arena is the ideal venue for a variety of events. The spectacular roof construction of the Big Arena rises from the upper circles to a height of 30 m.

The backstage area of the Big Arena is accessed via a ramp. Access for lorries (max. 40t) is possible upon clearing the parking zone in front of the delivery bay.

Backstage East on the basement floor consists of three dressing rooms, showers, WCs, VIP dressing room, two production offices and a tea kitchen. On the opposite side are the electrical operating rooms with sub-distribution for the stage.

Backstage West is located on the ground floor on the west side. This consists of an artist dressing room, a generously sized production office, a large fully equipped kitchen with adjoining crew catering room and a separate sanitary facility including showers.



### WALLS

The Big Arena entrance area walls are of exposed concrete.

The backstage area behind the Scene area can be divided as required by a black curtain. The glass façade running behind the upper circle can be darkened through automatically powered curtains.

### CEILINGS

The ceiling suspended below the roof is constructed of sound absorbing light timber boards. A steel-glass construction is the foundation of the skylights at the centre of the roof, which are equipped with a blind system.

### FLOOR

The floor of the Big Arena consists of anthracite coloured mastic asphalt (SLW30-suitable). In addition there are also diverse floor anchoring points.

### EQUIPMENT

The individual seats are manufactured of dark grey veneered wood.

The lower circle is constructed as a mobile stand. Through the retraction of this mobile stand, the arena can be enlarged by a diameter of approx. 8.5m.

Traverses for lighting and acoustic elements or similar can be installed using the rigging points distributed across the entire roof.

At the centre of the approx. 30 m high room is a ring-formed, height-adjustable traverse for the installation of event technology with the corresponding junction boxes.

The capacity of your event may deviate from the options provided here. The specific capacity can be determined in cooperation with the Tempodrom Technical Management.

- 1 circus ring
- 2 Scene rear area
- 3 upper circle
- 4 lower circle
- 5 entry backstage
- 6 operating room access
- 7 access loading ramp
- 8 access lower circle
- 9 access upper circle

## TECHNICAL EQUIPMENT

- 4 mobile stands (lower circle, rows 1-6)  
under the mobile stands:  
- 2 x double schuko  
- 2 x 16 A CEE 5-pol 6h
- 88 rigging points in the roof construction :  
load capacity per 1 t (linear order )  
load capacity per 2.5 t (ring-formed order )  
load capacity per 5 t (for ring)
- Additional use of anchor points in circus ring  
floor and entrances to the Big Arena is possible  
upon consultation with the Technical  
Management.
- 1 1 Eurotruss system ring traverse,  
anchored under the crown of the roof:  
Eurotruss ST 50 x 50 cm  
External diameter 14,40 m  
Chain hoists BGV C1 6 pcs.  
load capacity: per 1,3t  
load capacity Ring: 108 kg/m
- highest position +20,00 m  
lowest position +1,0 m  
Connections:  
- 120 x 2 kW (18 x HAN 16)  
- 9 x 32 A CEE 3-pol (4 x Han 6)
- Feed- in power operating room  
- 3 x 16 A CEE 5-pol 6h  
- 2 x 32 A CEE 5-pol 6h  
- 4 x lines DMX 4 x XLR  
- 2 x video cable RGB-AV
- 1 PreRigg  
Front truss folding truss 16,25 m  
load capacity: 100Kg/m  
on 2 x 1,25 t BGV C1-Motor  
load capacity: per 1 t
- Back truss folding truss 29,25 m  
on 3 x 1,25 t BGV C1-Motor  
load capacity: per 1 t
- 2 x PA-Truss folding truss 6,5m  
load capacity: max. 1,3 t  
distributed load

## POWER CONNECTIONS

Scene area distributed between six  
junction boxes: (scene left , right , rear ;  
separate light /sound)

- 4 x 63 A CEE 5-pol 6h
- 7 x 32 A CEE 5-pol 6h
- 5 x 16 A CEE 5-pol 6h
- 21 x Schuko
- DMX

Operating rooms for external productions

- 2 x 400 A 3P/N/PE on M12  
stay bolts
- 2 x 125 A CEE 5-pol 6h
- DMX

Distributed for Scene lighting in the upper  
circle:

- 9 x Harting junction boxes,  
HAN 16

Feed- in power operating room

- 9 x Schuko 16 A
- 1 x 63 A CEE 5-pol 6h
- 1 x 32 A CEE 5-pol 6h
- DMX

The available total capacity is to be  
coordinated with the Tempodrom  
Technical Management.

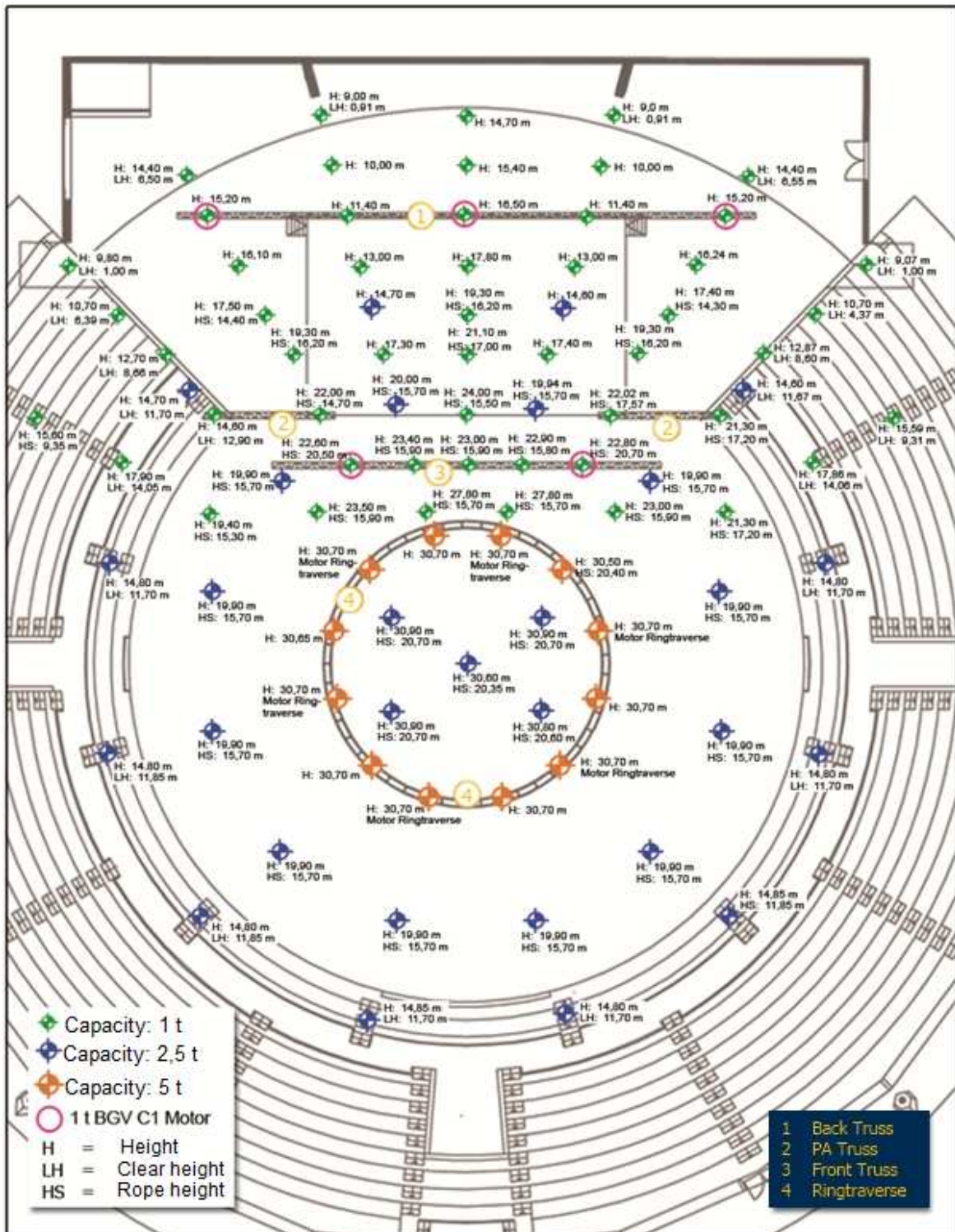
## DELIVERIES

Access to the Arena / stage level via a  
ramp  
(width 3.25 m, height 4.4 m, gradient  
12.5%)

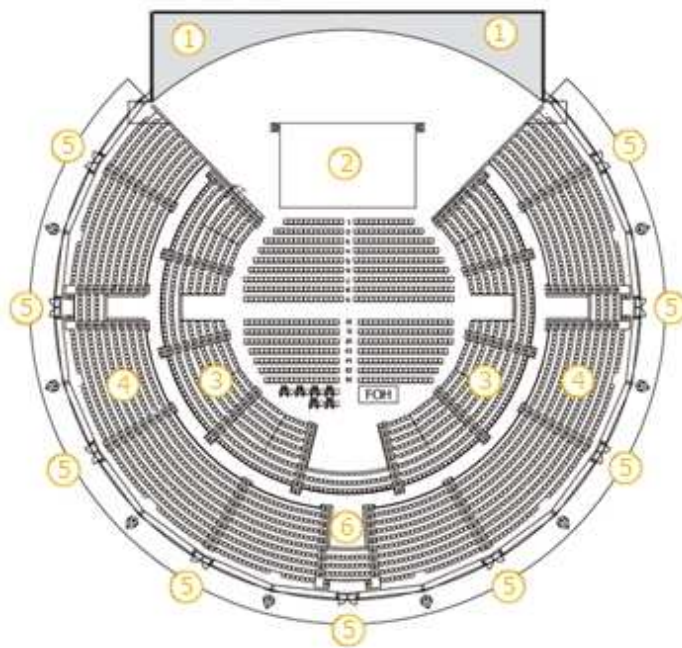
## TELECOMMUNICATIONS

- WLAN
  - Connection option for analogue  
telephones
- 1 ISDN-connection over S0-Bus of the  
house-internal network is available
- Fibre optic connection
  - PA system(alarm, announcements,  
gong)

GENERAL PLAN RIGGING POINTS



## SEATING OPTIONS



### OPTION A 1 - FULL SEATING With extended mobile stand

#### Scene

Scene diameter circus ring	25 m
Scene rear area	160 m <sup>2</sup>
Backstage area	470 m <sup>2</sup>
Clear height	9,3 – 29,4 m

#### Audience capacity

Upper circle	1718 Seats
Lower circle	856 Seats
Circus ring	558 Seats

Total 3132 Seats

plus 35 wheelchair users  
with attendant; 1% in acc.  
with BetrVO § 26

- 1 Scene rear area
- 2 Standard stage (16 x 10 x 1.20 m)
- 3 Lower circle
- 4 Upper circle
- 5 Access to roof terrace
- 6 Foyer entrance
- 7 Circus ring
- 8 Bar

### OPTION A 2 - FULL SEATING With partially extended mobile stand

#### Scene

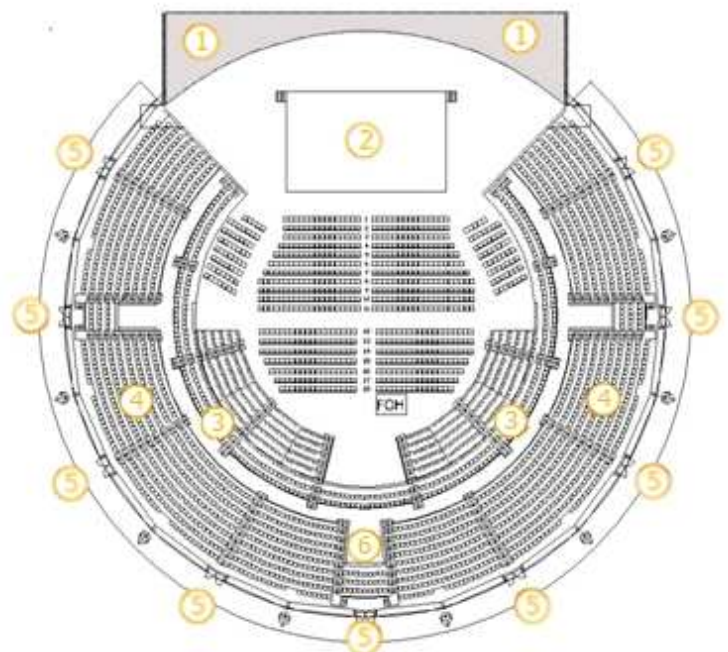
Scene diameter circus ring	25 m
Scene rear area	160 m <sup>2</sup>
Scene area	470 m <sup>2</sup>
clear height	9,3 – 29,4 m

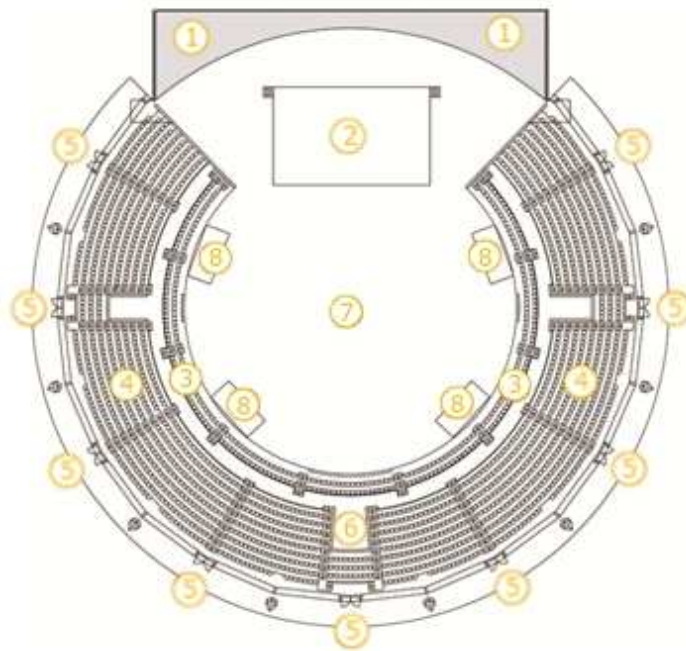
#### Audience capacity

Upper circle	1718 Seats
Lower circle	660 Seats
Circus ring	744 Seats

Total 3122 Seats

plus 11 wheelchair users  
with attendant





OPTION A 3 - STANDING ROOM  
With retracted mobile stand

Szene

Scene diameter circus ring	33,5 m
Scene rear area	160 m <sup>2</sup>
Backstage area	470 m <sup>2</sup>
Clear height	9,3 – 29,4 m

Audience capacity

Upper circle	1718 Seats
Lower circle	308 Seats
Circus ring	1450 Standing room

Total 3476 Places

plus 35 wheelchair users  
with attendant; 1% in acc.  
with BetrVO § 26

- 1 Scene rear area
- 2 Standard stage (16 x 10 x 1.20 m)
- 3 Lower circle
- 4 Upper circle
- 5 Access to roof terrace
- 6 Foyer entrance
- 7 Circus ring
- 8 Bar

OPTION A 4 - STANDING ROOM  
With partially extended mobile stand

Szene

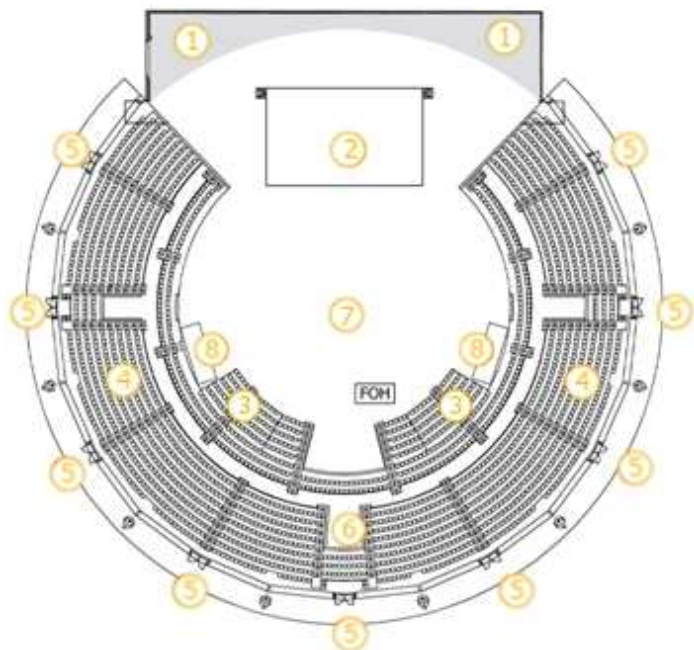
Scene diameter circus ring	25 m
Scene rear area	160 m <sup>2</sup>
Backstage area	470 m <sup>2</sup>
Clear height	9,3 - 29,4 m

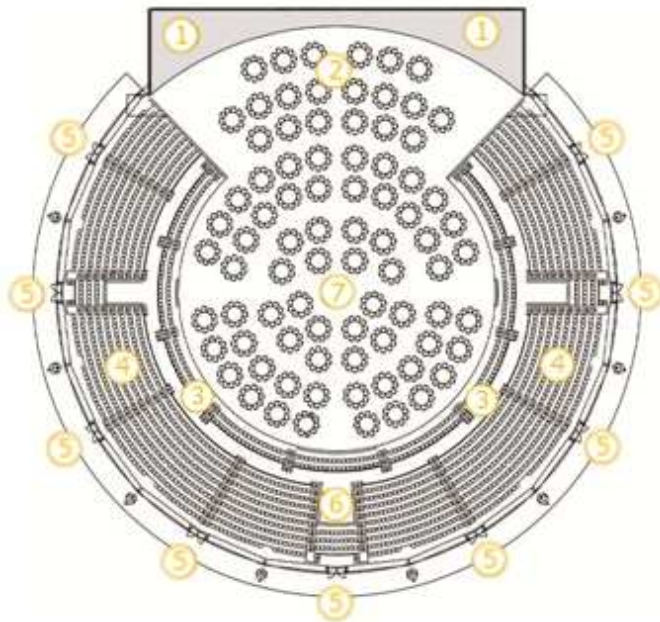
Audience capacity

Upper circle	1718 Seats
Lower circle	532 Seats
Circus ring	1200 Standing room

Total 3450 Spaces

plus 35 wheelchair users  
with attendant; 1% in acc.  
with BetrVO § 26





OPTION A 5 - GALA DINNER  
Round tables, diameter 1.80 m

Scene

Diameter circus ring	33,5 m
Scene rear area	160 m <sup>2</sup>
Clear height	9,3 – 29,4 m

Number of seats  
Without upper circle

Circus ring	820 Seats
Total	820 Seats

- 1 Scene rear area
- 2 Scene area
- 3 Lower circle
- 4 Upper circle
- 5 Access to roof terrace
- 6 Foyer entrance
- 7 Table seating

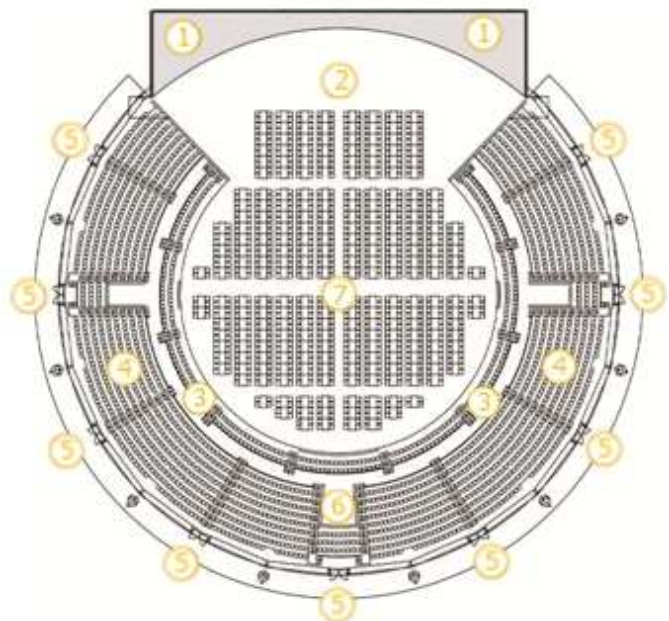
OPTION A 6 - GALA DINNER  
Long tables (1.20 m x 0.80 m)

Scene

Diameter circus ring	33,5 m
Scene rear area	160 m <sup>2</sup>
Clear height	9,3 – 29,4 m

Number of seats  
Without upper circle

Circus ring	1024 Seats
Total	1024 Seats



**OPTION A 7 - CONFERENCE  
PARLIAMENTARY**  
(1,20 m x 0,40 m / 1,20 m x 0,80 m)

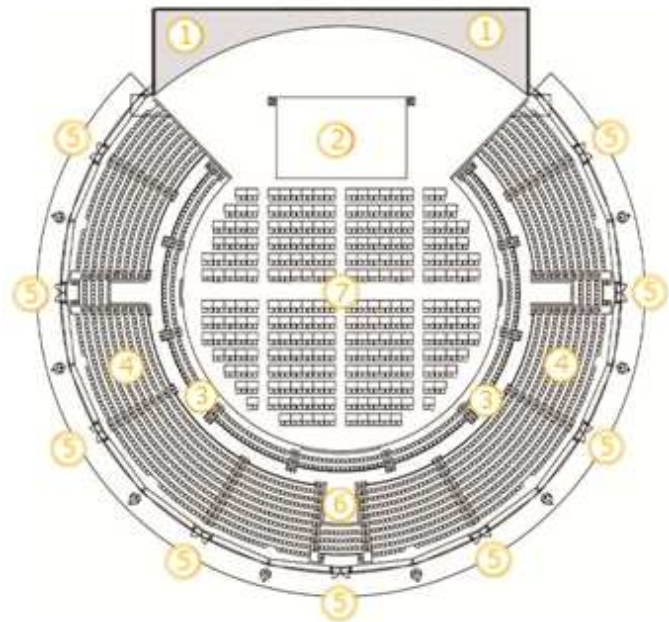
Scene

Diameter circus ring	33,5 m
Scene rear area	160 m <sup>2</sup>
Backstage area	470 m <sup>2</sup>
Clear height	9,3 – 29,4 m

Number of seats  
Without upper circle

1,20 m x 0,40 m Circus ring	672 Seats
<b>Total</b>	<b>672 Seats</b>

1,20 m x 0,80 m Circus ring	524 Seats
<b>Total</b>	<b>524 Seats</b>



- 1 Scene rear area
- 2 Scene area / standard stage 16 x 10 x 1.20 m
- 3 Lower circle
- 4 Upper circle
- 5 Access to roof terrace
- 6 Foyer entrance
- 7 Table seating
- 8 Rowed seating

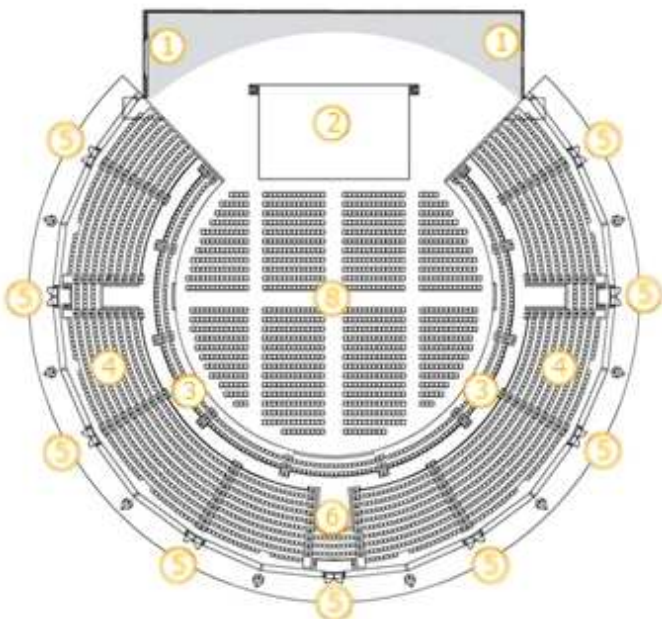
**OPTION A 8 - CONFERENCE  
ROWED SEATING**

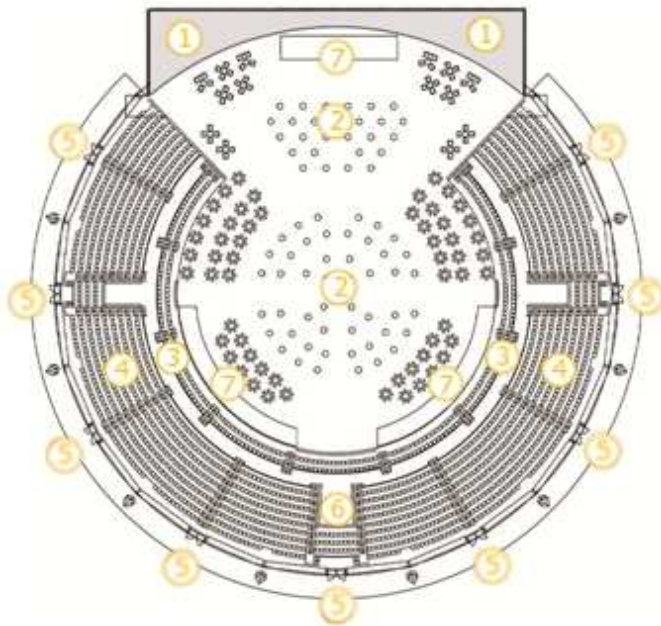
Scene

Diameter circus ring	33,5 m
Scene rear area	160 m <sup>2</sup>
Scene area	470 m <sup>2</sup>
Clear height	9,3 – 29,4 m

Number of seats  
Without upper circle

Circus ring	1052 Seats
<b>Total</b>	<b>1052 Seats</b>





OPTION A 9 - RECEPTION

without upper circle

Scene

Diameter circus ring	33,5 m
Scene rear area	160 m <sup>2</sup>
Clear height	9,3 – 29,4 m

Number of seats

Circus ring	1300 Seats
	466 Seats

Total 1766 Spaces

- 1 Scene rear area
- 2 Scene area / action space
- 3 Lower circle
- 4 Upper circle
- 5 Access to roof terrace
- 6 Foyer entrance
- 7 Gastronomy area

OPTION A 10 - SPORT  
With special stands

Scene

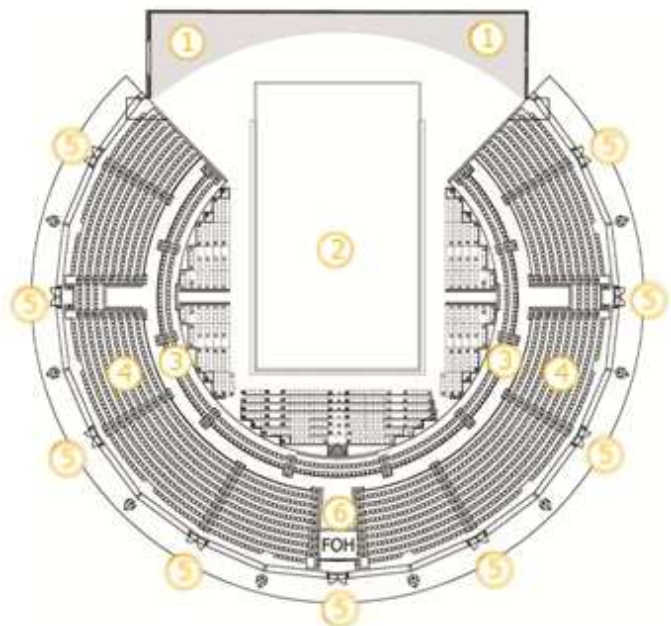
Diameter circus ring	33,5 m
Scene rear area	160 m <sup>2</sup>
Scene area	550 m <sup>2</sup>
Clear height	9,3 – 29,4 m

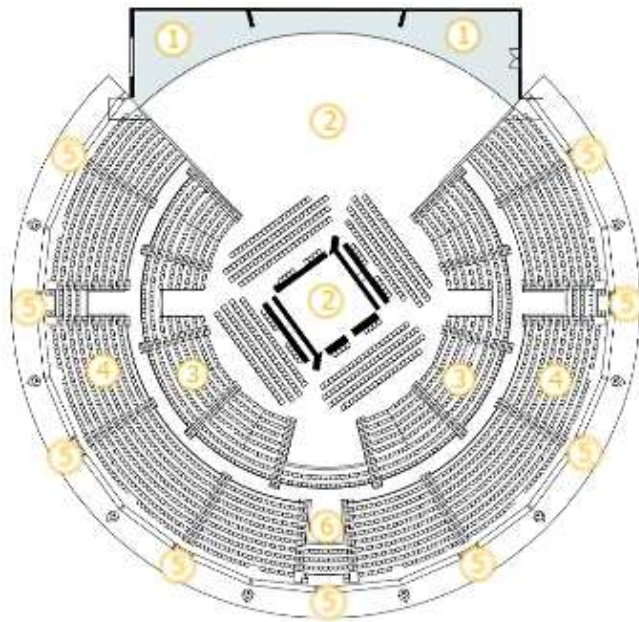
Audience capacity

Upper circle	1691 Seats
Lower circle	308 Seats
Circus ring	528 Seats

Total 2527 Seats

Plus 26 wheelchair users  
with attendant; 1% in acc.  
with BetrVO § 26





OPTION A 11 - BOXING / WRESTLING

Scene

Diameter circus ring	25 m
Scene rear area	160 m <sup>2</sup>
Scene area / Ring	55 m <sup>2</sup>
Clear height	9,3 – 29,4 m

Audience capacity

Upper circle	1718 Seats
Lower circle	856 Seats
Circus ring	302 Seats
<b>Total</b>	<b>2876 Seats</b>

Plus 29 wheelchair users with attendant; 1% in acc. with BetrVO § 26

- 1 Scene rear area
- 2 Scene area / action area
- 3 Lower circle
- 4 Upper circle
- 5 Access to roof terrace
- 6 Foyer entrance
- 7 Stage trolley

OPTION A 12 – CIRUS SEATING  
With extended mobile stand

Scene

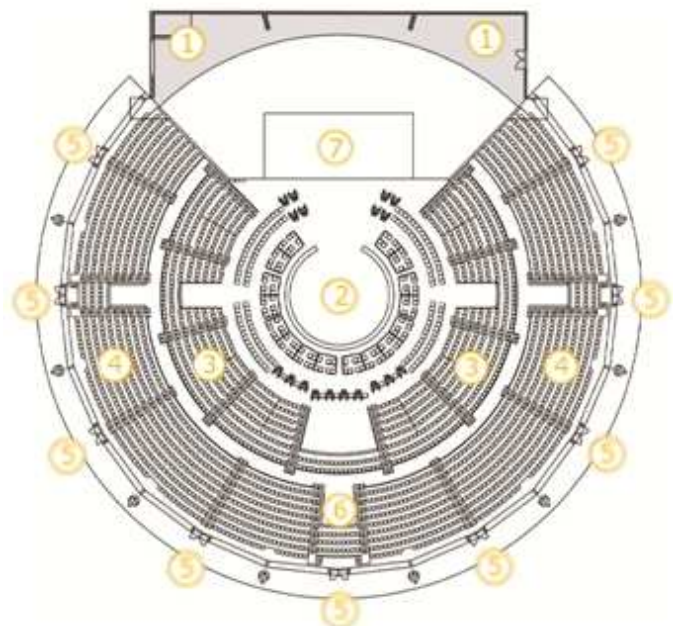
Diameter circus ring	25 m
Scene rear area	160 m <sup>2</sup>
Scene area / Arena	85 m <sup>2</sup>
Clear height	9,3 – 29,4 m

Audience capacity

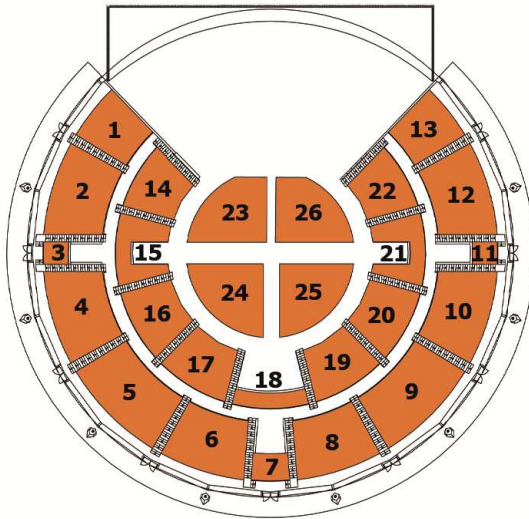
Upper circle	1718 Seats
Lower circle	856 Seats
Circus ring	262 Seats

Total 2836 Seats

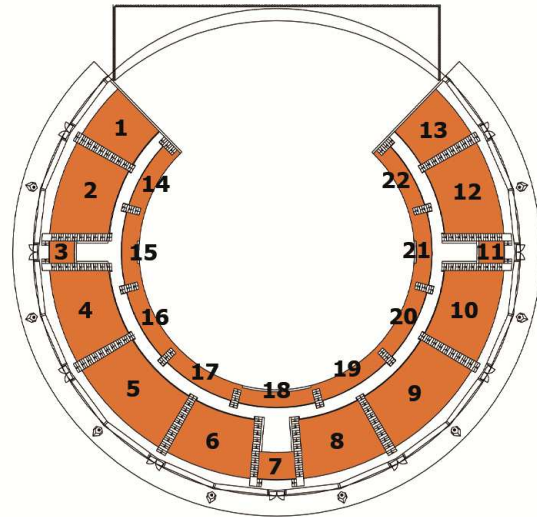
Including 29 wheelchair users with attendant; 1% in acc. with BetrVO § 26



BLOCK OVERVIEW BIG ARENA



Capacity reduction  
e.g. through FOH, follow spots and space for wheelchair users; in acc. with BetrVO § 26 (4) 1% of the total capacity plus attendants.  
Please determine the exact capacity for your event in cooperation with the Tempodrom Technical Management!



SEATING CAPACITIES

BLOCK NO.	SEATS
<b>UPPER CIRCLE</b> 1718	
1	105
2	177
3	15
4	177
5	208
6	164
7	27
8	163
9	208
10	177
11	15
12	177
13	105
<b>LOWER CIRCLE</b> 856	
14	101
15	81
16	114
17	114
18	36
19	114
20	114
21	81
22	101
<b>CIRCUS RING</b> 620	
23	156
24	123
25	123
26	156
<b>TOTAL SEATS</b>	<b>3132</b>

SEATING CAPACITIES

BLOCK NO.	SEATS
<b>UPPER CIRCLE</b> 1718	
1	105
2	177
3	15
4	177
5	208
6	164
7	27
8	163
9	208
10	177
11	15
12	177
13	105
<b>LOWER CIRCLE (ROWS 7&amp;8)</b> 308	
14	31
15	35
16	35
17	35
18	36
19	35
20	35
21	35
22	31
<b>TOTAL SEATS</b>	<b>2026</b>
<b>CIRCUS RING STANDING ROOM</b>	<b>1450</b>
<b>TOTALCAPACITY</b>	<b>3476</b>

## B SMALL ARENA

### DESCRIPTION

The circular Small Arena is located in the western part of the building. The room is ideal for smaller scale product presentations, press conferences, parties and concerts. The basic area of the Small Arena is 1.32 m below foyer level and can be transformed into a closed event area through mobile partitions with its own foyer, backstage area, bars and public toilets. Clear height at the centre of the room is 5.50 m, with a total diameter of 18.82 m.

### WALLS

The walls are of decorated exposed concrete. Through mobile partitions on ceiling rails, the Small Arena can be opened into the main foyer. This creates a generously-sized event venue that includes the circus ring of the Small Arena.

### CEILING

The circular suspended ceiling is formed like a cascade extending upwards. Lighting elements, various anchor points for traverses, a ring traverse and junction boxes for power connections are integrated.

### FLOOR

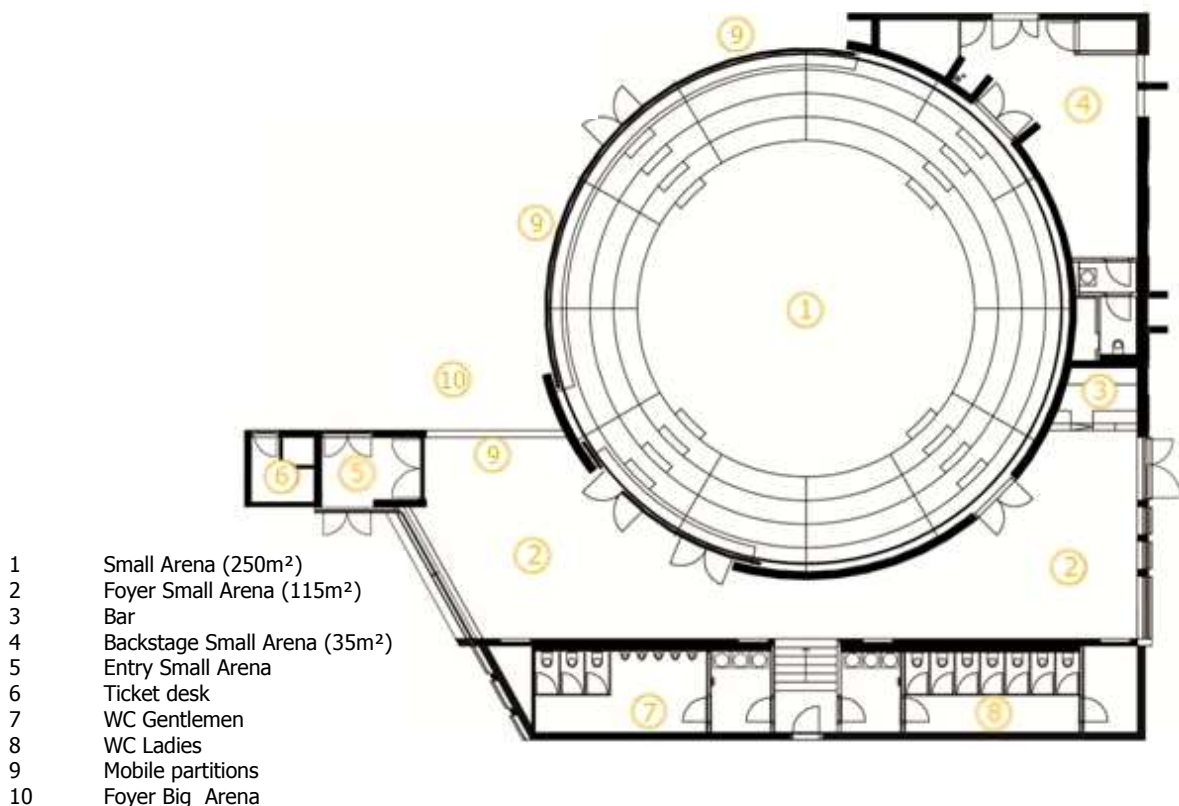
The flooring of the Small Arena is smoothed mastic asphalt. The surrounding curved seating steps are equipped with cushions as required.

### EQUIPMENT

The round form of the Small Arena can be used for circus and for stage performances with an individually designed stage. The inventory includes a permanently installed red velvet curtain on the inside of the walls that can be completely closed. To install the event technology, a ring traverse with corresponding junction boxes is available.

To the rear of the Small Foyer is a fully-equipped bar.

In the backstage area are the connections for event technology as well as a WC with basin. The Small Arena area has its own public toilet facilities.



## TECHNICAL EQUIPMENT

- 24 rigging points  
Load capacity per 250 kg  
max. ceiling load 2,000 kg
- 1 ring traverse with transverse cross bar
- four belt traverse system 29 x 29 cm
  - external radius 10 m
  - max. load capacity: 800 kg
- dimmable arena lighting  
available as standard
- 4 x 6erBar PAR 64 500W
  - 6 x Passo 1 kW Fresnel
  - 4 x 575W Profiler ETC S4 junior 26°
  - 8 x Martin MiniMac Washlight 150 W HTI
  - 4 x Martin MiniMac Profile 150 W HTI
  - 4 x Martin SCX 600 Scanner
  - 1 x Hazer
  - 1 x E-Cue multifunctional controller incl. Fader unit
  - 4 x 6 ch. dimmer
  - 1 x Ultralite booster
  - 6 x PAR 56 silver, 300W, with base board, permanently installed in the Small Arena foyer

Further standard fittings for various event formats may be booked.

## POWER CONNECTIONS

### Foyer area

- 4 floor tanks with 2 Schuko each

### Small Arena

- 2 x 16 A CEE 5-pol 6h
- 4 x Schuko

### Backstage Small Arena (separate light /sound)

- 1 x 125 A CEE 5-pol 6h
- 1 x 63 A CEE 5-pol 6h
- 2 x 32 A CEE 5-pol 6h
- 1 x 16 A CEE 5-pol 6h
- 6 x Schuko
- DMX


The maximum available capacity is to be agreed with the Tempodrom Technical Management.

## TELECOMMUNICATIONS

- WLAN
- Connection option for analogue telephones
- 1 ISDN-connection via S0-Bus of the house-internal connection
- Fibre optic connection for Small Arena & backstage
- PA system (alarm, announcements, gong)

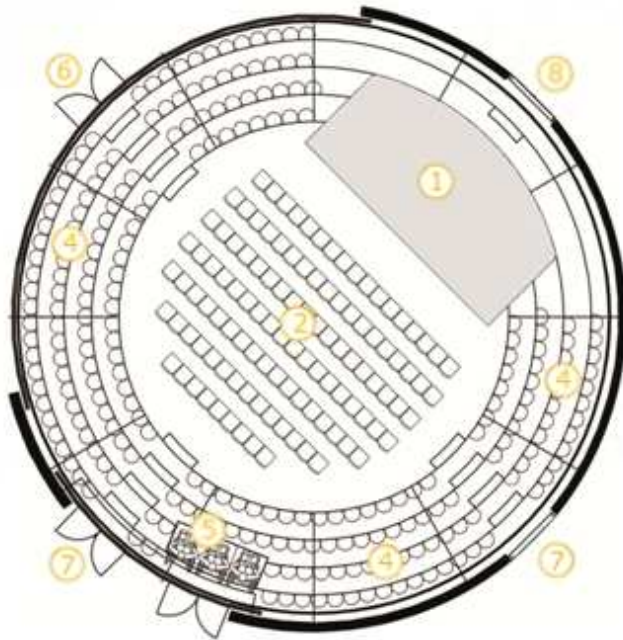
## GENERAL PLAN RIGGING POINTS



- 1 Ring traverse
-  max. load capacity per 250 kg

## SEATING OPTIONS

### OPTION B 1 – FULL SEATING



#### Scene

Diameter circus ring	11,50 m
Standard stage	8 x 4 m
Clear height	5,50 m

#### Audience space

Spaces on seating steps	228 Seats
Seating circus ring	111 Seats
Wheelchair users	4 Spaces

Total 343 Spaces

Including 4 wheelchair users with attendant; 1% in acc. with BetrVO § 26

- 1 Standard stage 8 x 4 m
- 2 Circus ring seating
- 3 Scene area circus ring
- 4 Seating steps
- 5 Wheelchair platforms
- 6 Access to Foyer Big Arena
- 7 Access to Small Arena foyer
- 8 Access backstage

### OPTION B 2 – STANDING ROOM

#### Scene

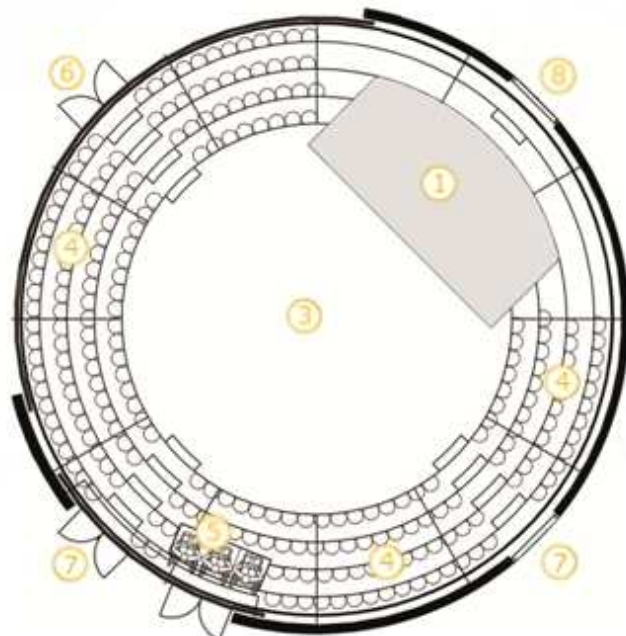
Diameter circus ring	11,50 m
Stage	8 x 4 m
Scene area circus ring	90 m <sup>2</sup>
Clear height	5,50 m

#### Audience space

Spaces on seating steps	228 Seats
Spaces in circus ring	172 Spaces
Wheelchair users	4 Spaces

Total 403 Spaces

Including 4 wheelchair users with attendant; 1% in acc. with BetrVO § 26



## C FOYER

### DESCRIPTION

The 1,000 m<sup>2</sup> Foyer extends over three floors and offers sufficient space for use as exhibition, reception or gastronomy area for approx. 1,200 visitors

Via a free-standing semi-circular staircase, visitors can access the centre entry to the Big Arena.

The cloakroom area, toilets and the circus ring of the Big Arena are located on the basement floor. All public facilities in the building are accessed from the Foyer and are suitable for wheelchair access.

The total of six min entry doors to the Foyer each have a width of 2.18m.

### CEILINGS

The Foyer ceilings are partially of exposed concrete and partially painted dark red. Lighting elements, anchor points for traverses, PA system speakers and sprinklers are integrated. All skylights in the ceiling are connected to the roof terrace and include integrated lighting elements. The ceiling has a height of 4.21 m.

### FLOOR

The floor is smoothed mastic asphalt with integrated floor tanks, which are equipped with power telecommunication connections.

The stairs running around the Big Arena are constructed of exposed concrete blocks.

### EQUIPMENT

The bar counters with power connections, water supply and drains, sinks, fridges and work areas as well as merchandising stands with power and telephone connections are grouped in a semi-circle around the Big Arena. The bar counters and wall niches with seating are manufactured from wood.

All levels of the building are suitable for wheelchair access through a centrally accessed lift.

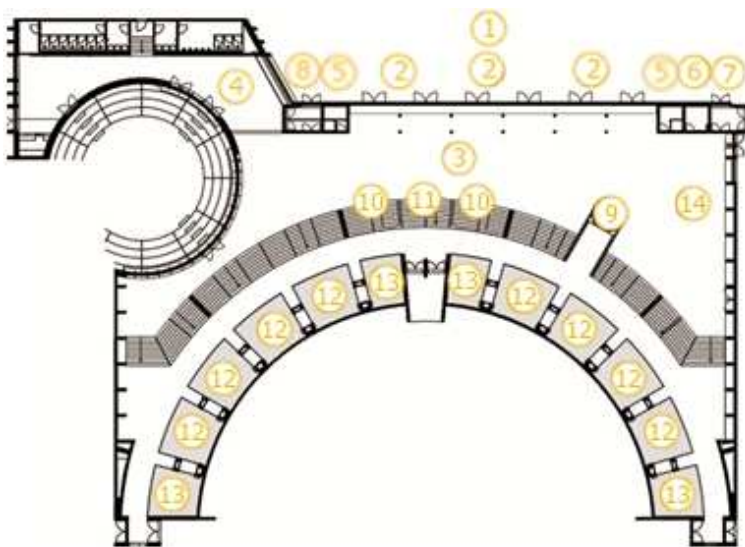
### TECHNISCHE AUSSTATTUNG

- 8 rigging points per 250 kg load capacity

### POWER CONNECTION & TELECOMMUNICATIONS

Distributed between 12 floor tanks:

- WLAN
- connections for analogue telephones
- 1 ISDN-connection via S0- Bus in-house network available
- Fibre optic connection
- 12 x Schuko
- PA system (alarms, announcements, gong)



- |    |   |
|----|---|
| 1  | Forecourt   |
| 2  | Visitor entrances   |
| 3  | Foyer ground floor (1000m <sup>2</sup> )                      |
| 4  | Foyer Small Arena (115m <sup>2</sup> )                        |
| 5  | Ticket desk   |
| 6  | Fire alarm centre   |
| 7  | Restaurant / Staff entrance                                   |
| 8  | Entrance Small Arena  |
| 9  | Lift  |
| 10 | Access to public cloakroom basement/ lower circle/circus ring |
| 11 | Entrance upper circle   |
| 12 | Gastronomy  |
| 13 | Kiosks for merchandising                                      |
| 14 | Additional merchandising area                                 |

The seats and capacity of your events can deviate from the variants presented here. You determine specific numbers in co-operation with the technical management of the Tempodrom.

## D LOUNGE

### DESCRIPTION

Linked to the western side of the foyer area and Backstage West is the Lounge. The unique architecture of this room, the curved layout, the cascade-formed rising ceiling as well as dimmable lighting lend the Lounge its special character.

### WALLS

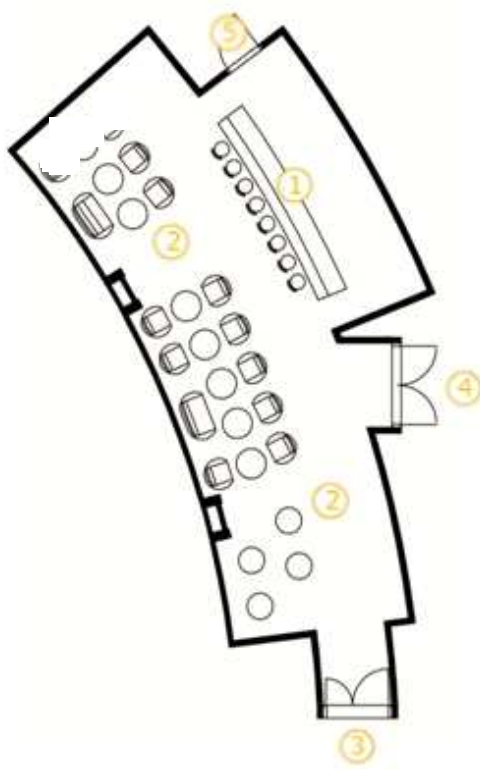
The walls are painted dark red in part and partially left in an exposed concrete optic.

### CEILINGS

The stepped-form ceiling of the room is of decorated exposed concrete. The PA-system speakers are integrated in this.

### FLOOR

The floor is of smoothed mastic asphalt.



### EQUIPMENT

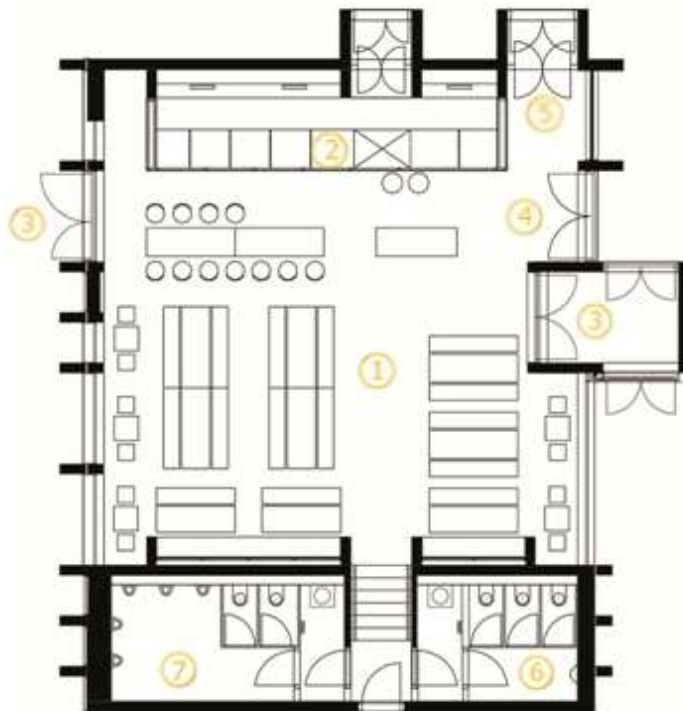
The Lounge inventory includes a high-quality bar counter, bar stools and tables, 10 luxurious armchairs and 2 double sofas of black leather. In addition there are 2 round stainless steel and milk glass tables, as well as a variety of dark wooden tables.

The Lounge has a fully-equipped bar area with water supply and drainage, power, sinks and two fridges.

- WLAN
- 1 ISDN-connection available via the S0-Bus of the house-intern network
- dimmable lighting
- PA-system (alarms, announcements, gong)
- 2 active speakers with 3.5 mm jack (behind the bar)

- 1 Bar
- 2 Lounge (100m<sup>2</sup>)
- 3 Foyer entrance
- 4 Backstage West entrance
- 5 House technology

E RESTAURANT



EQUIPMENT

- Fully equipped counter with:
- Show cooking area
- Refrigerated display cases
- Beer pump complete for alcohol-free beverages and beer
- further cooling facilities for drinks
- variable seating
- sound system
- 63 A CEE 5-pol 6h
- 6 x Schuko
- dimmable lighting
- PA-system (alarms, announcements, gong)

- 1 Restaurant
- 2 Bar
- 3 Visitors entrance
- 4 Foyer entrance
- 5 Kitchen entrance
- 6 WC Ladies
- 7 WC Gentlemen

## F FORECOURT/ OUTDOOR AREA

### DESCRIPTION

With its 1,500 m<sup>2</sup> Tempodrom offers an outdoor area which offers space to the most varied of event concepts. The forecourt can be used as for VIP arrivals, for a cloakroom tent or as a catering area.

As parts of the forecourt and the western drive serve as emergency service access, these may not be used for parking. Power connections are located on both sides of the forecourt on the building facade. A further power supply is located next to the entrance to the Big Arena on the eastern side of the building. This also serves as a media connection for OB vans or tour busses.

### FLOOR

The forecourt and surrounding areas are sealed with an asphalt surface.

### TECHNICAL EQUIPMENT ELECTRICITY CONNECTIONS & TELECOMMUNICATIONS

#### Forecourt:

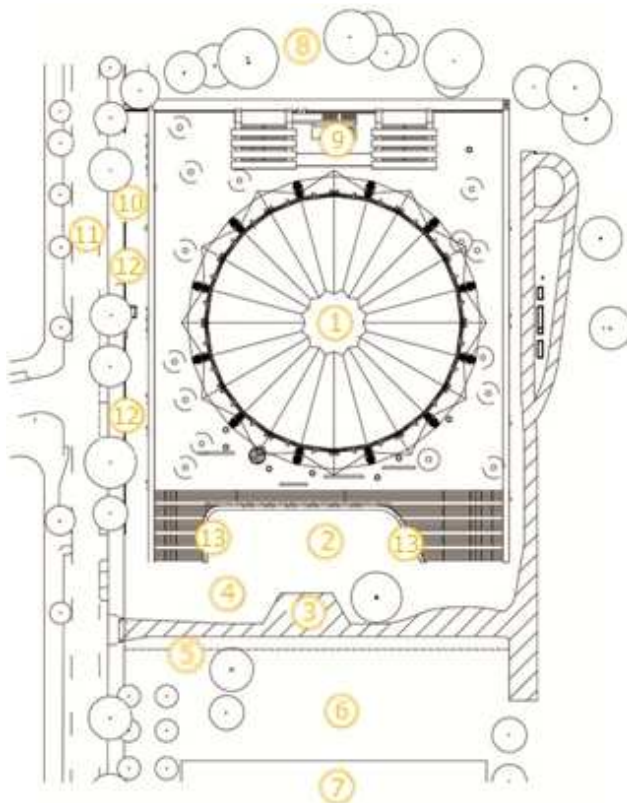
- 1 x 63 A CEE 5-pol 6h
- 1 x 32 A CEE 5-pol 6h
- 2 x 16 A CEE 5-pol 6h
- 2 x Schuko
- Connection for analogue telephones available
- 1 ISDN- connection available via the S0-Bus of the house-internal network
- Fibre optic connection

#### West side:

- 1 x 63 A CEE 5-pol 6h

#### Access Big Arena/ east side

- 1 x 125 A CEE 5-pol 6h
- 1 x 63 A CEE 5-pol 6h
- 1 x 32 A CEE 5-pol 6h
- 1 x Schuko
- Connection for analogue telephones available
- 1 ISDN connection via S0-Bus of the house-intern network



- 1 Tempodrom
- 2 Forecourt (1500m<sup>2</sup>)
- 3 Emergency services manoeuvring area
- 4 Velo paths
- 5 Disabled parking spaces
- 6 Lawn
- 7 Sport ground
- 8 City wood
- 9 Patio Liquidrom
- 10 loading ramp access
- 11 Möckernstraße
- 12 Parking for OB vans / tour busses
- 13 Forecourt junction boxes

## G ROOF TERRACE

### DESCRIPTION

As ideal addition to the venues inside the Tempodrom there is also a roof terrace with over 3,000 m<sup>2</sup>.

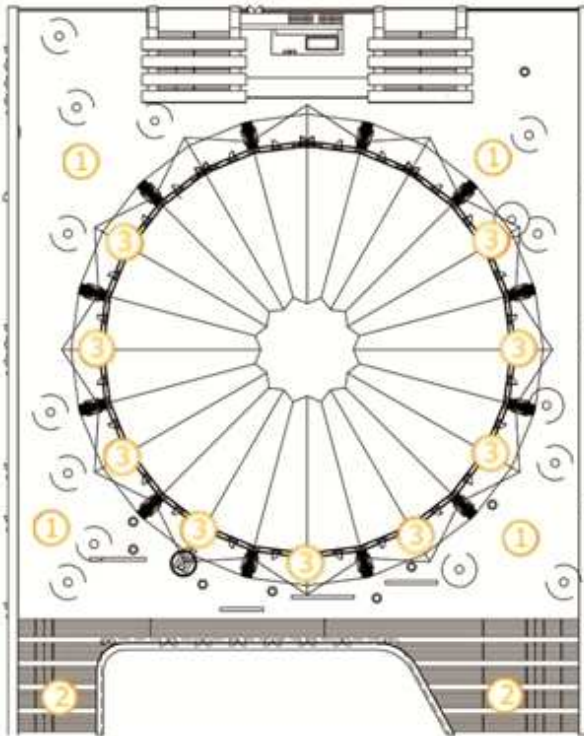
This open-air space surrounds the impressive roof and is entirely covered in wooden flooring (surface load 500 kg/m<sup>2</sup>). From the upper circle of the Big Arena the roof terrace can be directly accessed via nine fully glazed double-winged doors. The area is also accessed from the building forecourt by a wide open-air staircase.

From spring to autumn, Tempodrom provides the ideal location for combined indoor and outdoor events.

### TECHNICAL EQUIPMENT

Distributed between 10 floor tanks:

- 6 x water supply
- 5 x waste water drains
- 8 x Schuko
- 3 x 32 A CEE 5-pol 6h
- 1 x 16 A CEE



- 1 roof terrace (3000m<sup>2</sup>)
- 2 outdoor staircase/roof terrace access
- 3 access to the Big Arena /roof terrace

## H BACKSTAGE EAST

### DESCRIPTION

The backstage area located to the east of the Scene store consists of three dressing rooms, showers, WCs, a VIP dressing room, two production offices and a tea kitchen.

A generous central area with flexible, production-related use is available, for example as a crew area.

Offices 1 & 2 are provided with telephone and data connections; the VIP dressing room also has its own bathroom with shower and WC. Dressing Rooms 4 and 6 have direct access to the respective WC and shower rooms. Furniture such as tables, chairs, sofas and mirror are available in sufficient quantities. A corresponding inventory list is available upon request.



1	Office 1 (6m <sup>2</sup> )
2	Office 2 (6m <sup>2</sup> )
3	Dressing Room 3 (12m <sup>2</sup> )
4	Toilets Ladies
5	Dressing Room 4 (6m <sup>2</sup> )
6	Dressing Room 5 (8m <sup>2</sup> )
7	Dressing Room 6 (6m <sup>2</sup> )
8	Toilets Gentlemen
9	Crew area (100m <sup>2</sup> )
10	Tea kitchen
11	Access to the Big Arena

### TECHNICAL EQUIPMENT

#### • WLAN

#### Production office east 1 & 2:

- 2 telephone connections
- diverse Schuko
- TV & radio connections

#### VIP dressing room:

- 2 telephone connections
- diverse Schuko
- TV & radio connections

#### Cloakrooms 1, 2, 3:

- Schuko

#### Crew area:

- 2 telephone connections
- diverse Schuko
- TV & radio connections
- Fibre optic lines

#### Tea kitchen:

- diverse Schuko
- 1 refrigerator

## I BACKSTAGE WEST – DRESSING ROOM 1

### DESCRIPTION

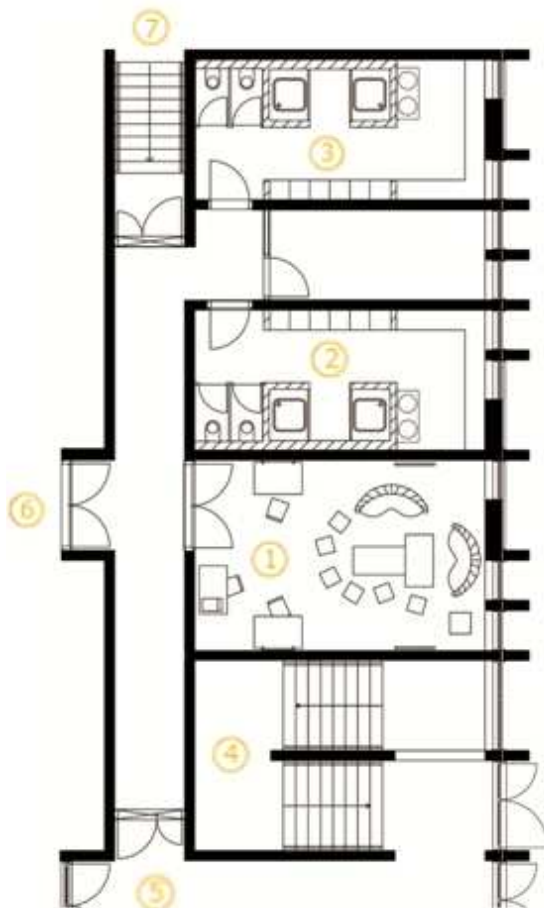
There is an additional dressing room in the western area of the building with direct access backstage on the basement level. The 35m<sup>2</sup> room in red is fitted with comfortable sofas and seating cubes, two illuminated make-up mirrors and tables and two oversized wall mirrors. WCs and showers are in direct proximity

### TECHNICAL EQUIPMENT

- 3 x double wall mounted schukos
- WLAN
- 2 telephone/data connections
- TV/radio connection

### FURNITURE

- 2 sofas
- couch table
- diverse cube seats
- 2 make-up mirrors with table
- 2 wall mirrors 1 x 2 m
- further furniture available upon request

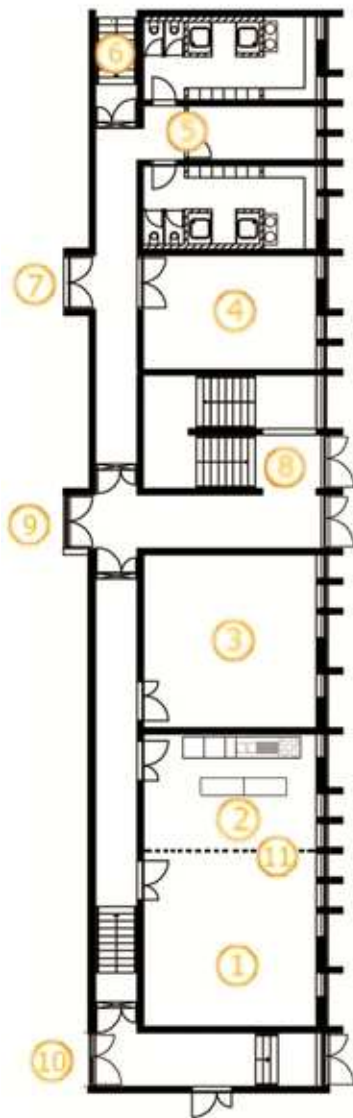


- 1 Dressing Room 1 (35m<sup>2</sup>)
- 2 Bathroom Women
- 3 Bathroom Men
- 4 Entrance Big Arena lower circle
- 5 Entrance Big Arena upper circle
- 6 Entrance Lounge
- 7 Entrance backstage

## J BACKSTAGE WEST – CATERING, DRESSING ROOM 2

### DESCRIPTION

The kitchen located on the west side with connected crew catering room, as well as Dressing Room 2 have an expansive window front. Due to their proximity to the Big Arena, Small Arena and the lounge, as well as equipment with telecommunications technology, these are predestined for use as workshops or production offices for large events. They offer room for 40 to 100 people. In the kitchen, a fully-equipped kitchenette is available. The catering area, equipped with marquee fittings can be separated from the kitchen with suspended partitions.



### TECHNICAL EQUIPMENT

#### CATERING

- Cooker (4 hotplates & oven)
- Roasting pan
- Double sink
- dishwasher
- 2 Fridges
- 2 Stainless steel workbenches
- Partition elements

- WLAN
- 1 ISDN connection available via the S0-Bus of the house-internal network
- dimmable lighting
- PA system (alarm, announcements, gong)
- several Schuko sockets
- 1 x 32 A CEE 5-pol 6h

Distributed between 4 floor tanks:

- 2 x double schuko
- 4 telephone/data connections
- Fibre optic connection
- 

#### DRESSING ROOM 2

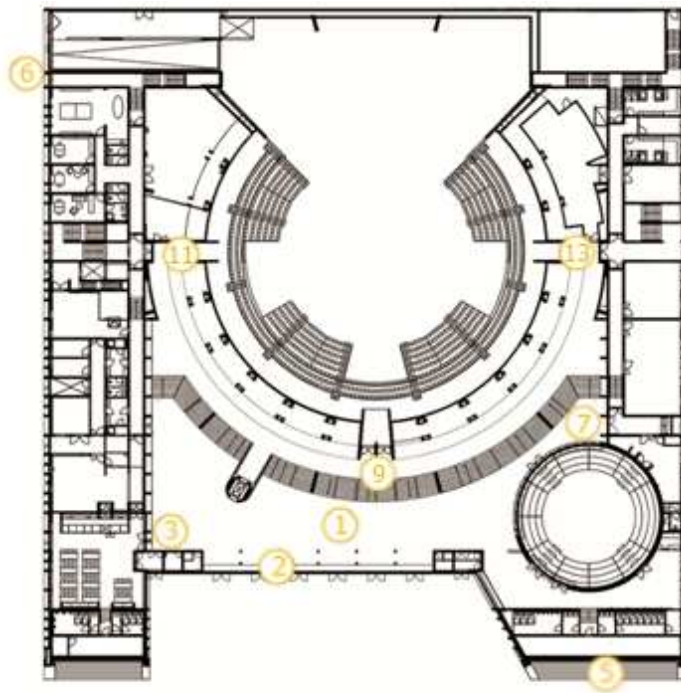
- 1 x Schuko 16 A, wall-mounted

Distributed between 3 floor tanks:

- 2 x double schuko
- WLAN
- 4 telephone/data connections
- Fibre optic connection

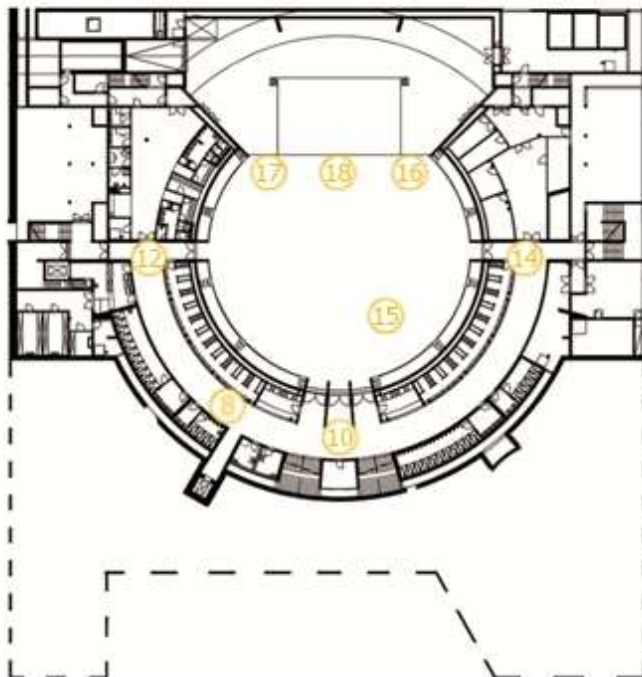
- |    |                                     |
|----|-------------------------------------|
| 1  | Catering (50m <sup>2</sup> )        |
| 2  | Kitchen (35m <sup>2</sup> )         |
| 3  | Dressing Room 2(50m <sup>2</sup> )  |
| 4  | Dressing Room 1 (35m <sup>2</sup> ) |
| 5  | Bathrooms/ Büro                     |
| 6  | Access to backstage area            |
| 7  | Lounge entrance                     |
| 8  | Entry to Big Arena lower circle     |
| 9  | Entry to Big Arena upper circle     |
| 10 | Foyer entrance                      |
| 11 | Mobile partition                    |

POSITION SECURITY



- 1 Head of Security
- 2 Main entrances
- 3 Foyer
- 4 Forecourt access
- 5 Outdoor area/ roof terrace
- 6 Loading gate/ stage door
- 7 Emergency exit WEST
- 10 Foyer entrance
- 11 Mobile partition

4



- 8 Patrol cloakroom
- 10 Usher lower circle NORTH
- 12 Usher lower circle EAST
- 14 Usher lower circle WEST
- 15 FOH
- 16 Stage Left
- 17 Stage Right
- 18 Orchestra pit

## SERVICEPARTNER

### CATERING

Sarah Wiener Berlin GmbH  
Charlottenstraße 13  
10969 Berlin

Fon +49 (0)30 707180-0  
Fax +49 (0)30 707180-229

E-mail [info@sarahwiener.de](mailto:info@sarahwiener.de)  
Internet [www.sarahwiener.de](http://www.sarahwiener.de)

### FIRE PREVENTION / PARAMEDICS

Brandschutzbüro und Dienstleistungen  
Behring GmbH  
Geflügelsteig 78  
12355 Berlin

Fon +49 (0)30 66 46 02 - 05  
Fax +49 (0)30 66 06 84 - 60

E-mail [kontakt@behring.biz](mailto:kontakt@behring.biz)  
Internet [www.behring.biz](http://www.behring.biz)

### EVENT TECHNIC + SHOW ELECTRONICS

TSE AG · Technik und Service für Events AG  
Ton-, Licht-, Bühnenequipment,  
AV- und Konferenztechnik  
Bergiusstrasse 52  
12057 Berlin

Fon +49 (0)30 39 06 1 - 0  
Fax +49 (0)30 39 06 1 - 199

E-mail [info@tse-ag.com](mailto:info@tse-ag.com)  
Internet [www.tse-ag.com](http://www.tse-ag.com)

### CLEANINGNG

GRG Services Berlin  
Markstraße 35-37  
13409 Berlin

Fon +49 30 49009-200  
Fax +49 30 49009-299

E-Mail [berlin@grg.de](mailto:berlin@grg.de)  
Internet [www.grg.de](http://www.grg.de)

### SECURITY

B.E.S.T. Veranstaltungsdienste GmbH  
Stieffring 6  
D-13627 Berlin

Fon +49 (0)30 34 34 67 - 0  
Fax +49 (0)30 34 34 67 - 67

E-mail [info@bestvd.de](mailto:info@bestvd.de)  
Internet [www.bestvd.de](http://www.bestvd.de)

## INFORMATION FOR EVENT ORGANISERS

### FIRE BRIGADE / PARAMEDICS

For events in the Tempodrom Big Arena it is mandatory that from opening of the event to the public, the presence of 3 fire prevention officers from the fire brigade is required. Block 8, row 1, seat 1 is reserved for fire prevention monitoring in the audience area. This seat is to be omitted from ticket sales! Furthermore, the presence of 2 paramedics is also required for events in the Big Arena.

### SHOW ELECTRICIANS

For reasons of operating safety, the show electrician must be present at least 1 hour prior to the show commencing and remain present until the end of the event. The requirement for the electrician during the technical set-up work is oriented on the type of event and is to be decided upon consultation with Tempodrom.

### HALL INSPECTOR

The presence of the Tempodrom hall inspector is essentially required for the duration of the event (admission to the end) as well as for set-up and disassembly in accordance with BetrVO §32. The instructions of the Hall Inspector are to be complied with.

### SECURITY STAFF

Tempodrom has concluded an exclusivity contract with B.E.S.T. Veranstaltungsdienste GmbH Berlin. The number of staff is orientated on the type of event, the anticipated number of visitors and is to be determined upon consultation with B.E.S.T. and Tempodrom Technical Management.

### CLOAKROOM ATTENDANTS

Tempodrom has its own staff to provide cloakroom services. The number of employees is based on the type of event and is determined by Tempodrom.

### POWER CONTROL ROOM

The power operating room is located stage left in the Big Arena for the power connections and event technology. This is required in accordance with building regulations and serves to house the dimmer control panel during the event. Through a firewall closable with a fire retardant block, cable lines can be set-up for installation. All cable lengths, multicore and extensions must be measured in a manner that the dimmer control cupboards in the power control room can be adjusted. A wiring plan for the Big Arena can be obtained from the Tempodrom Technical Management.

### CAPACITY & TICKET SALES

In accordance with BetrVO Berlin §26, para. 4 1% of audience space is to be reserved for wheelchair users, however with a minimum of 2 spaces. These are to each be allocated a seat for attendants. For this reason and through the event technology installation (FOH, follow spots, camera spaces etc.) as well as further seats blocked for the event organiser, there is an individual total capacity for each individual event. Therefore please assess the total capacity for ticket sales in cooperation with the Tempodrom Technical Management.

### PARKING PERMISSION

Parking permission for tour busses, lorries and OB vans must be applied for from Tempodrom at least two weeks prior to the start of use. With special permission, a maximum of 110 m may be applied for. (Park zones A, B, D see page 37)

### DECORATION & FITTINGS

All decorations, fittings, furnishings as well as stands and info boxes must have at least B1 certification in accordance with DIN 4102. This certificate must be issued to the Tempodrom Technical Management 4 weeks prior to the start of the event.

### FORECOURT

Sections of the forecourt and the western vehicle access to the Tempodrom serve as emergency service access or manoeuvring areas. It is therefore not possible to use the forecourt for parking. Exceptions from this parking prohibition are possible for delivery traffic for the Small Arena and the foyer, however only up until one hour prior to the start of admission to the events. In cooperation with the Tempodrom Technical Management vehicle access during special events is possible.

### PREPARATION, PERMITS & IMPLEMENTATION

The Tempodrom team are at your disposal for the professional planning, preparation, authorisation and implementation of your event. We advise that the permit procedure for corporate events with the building authority must be applied for at least 4 weeks prior to the respective event. Please coordinate all requirements with the Tempodrom Technical Management.

## PUBLIC AUTHORITY

### BAUAUFSICHT

Bezirksamt Friedrichshain-Kreuzberg von Berlin  
Amt für Stadtplanung, Vermessung und Bauaufsicht  
Yorckstraße 4 - 11, 10965 Berlin

#### Contact person

Herr Becker

Fon +49 (0) 30 902 98 - 3311

Fax +49 (0) 30 902 98 - 2958

E-Mail reinhard.becker@ba-fk.verwalt-berlin.de

### ENVIRONMENTAL OFFICE

Bezirksamt Friedrichshain-Kreuzberg von Berlin  
Abt. Stadtentwicklung und Bauen  
Amt für Umwelt und Natur  
Fachbereich Umwelt  
Yorckstraße 4 - 11, 10965 Berlin

Fon +49 (0) 30 902 98 - 4411

Fax +49 (0) 30 902 98 - 2727

### PARKS AUTHORITY

Bezirksamt Friedrichshain-Kreuzberg von Berlin  
Abt. Stadtentwicklung und Bauen  
Amt für Umwelt und Natur  
Fachbereich Naturschutz und Grünflächen  
Yorckstraße 4 - 11, 10965 Berlin  
Postfach 350701, 10216 Berlin

#### Contact person

Frau Keller

Fon +49 (0) 30 902 98 - 8024

Fax +49 (0) 30 902 98 - 8033

E-Mail natur@ba-fk.verwalt-berlin.de

### LAGETSI

Landesamt für Arbeitsschutz, Gesundheitsschutz  
und technische Sicherheit Berlin  
Alt-Friedrichsfelde 60, 10315 Berlin

#### Contact person

Herr Reich

Fon +49 (0) 30 902 545 - 572

Fax +49 (0) 30 902 545 - 315

### FIRE BRIGADE

Direktion Süd  
Vorbeugender Brandschutz  
- Veranstaltungsabnahmen -  
Kirchhofstraße 20, 12051 Berlin

#### Contact person

Herr Overlöper

Fon +49 (0) 30 387 502 - 37

Fax +49 (0) 30 387 502 - 97

Feuerwache Kreuzberg  
Wiener Straße 64, 10999 Berlin

Fon +49 (0) 30 617 871 - 11

### POLICE

Direktion 5 – Abschnitt 53  
Friedrichstraße 219, 10969 Berlin  
Fon +49 (0)30 466 45 53 - 700 / 701 (Wache)  
Fax +49 (0)30 466 45 53 - 799  
Internet www.polizei.berlin.de

### ROAD TREFFIC AUTHORITY

Frankfurter Allee 35 - 37  
10245 Berlin

#### Contact person

Herr Hoffleit

Fon +49 (0)30 902 98 - 8078

Fax +49 (0)30 902 98 - 8019

## MEDICAL SERVICES

### HOSPITALS

Krankenhaus am Urban  
Krankenhausbetrieb von Berlin-Kreuzberg  
Dieffenbachstr. 1, 10967 Berlin  
Fon +49 (0) 30 130 21 - 0 1,7 km

Charité Universitätsklinikum  
Schumannstraße 20 - 21, 10117 Berlin  
Fon +49 (0) 30 450 - 50 3,4 km

## INFRASTRUCTURE

### AIRPORTS

- Berliner Flughafen GmbH  
**Flughafen Berlin-Schönefeld**, 12521 Berlin  
Fax +49 (0) 180 5000186 17,0 km

Directions Schönefeld Airport – Tempodrom:  
From Schönefeld Airport continue straight on from the B179/Waltersdorfer Chaussee, to B179/Neuköllner Straße, Rudower Straße, Buschkrugallee, Karl-Marx-Straße, Hasenheide, Gneisenaustraße.  
Turn right onto Mehringdamm, left onto Hallesches Ufer. Second turning on the right into Möckernstraße.

### STATIONS

- **Berlin Hauptbahnhof**  
Invalidenstraße 53, 10557 Berlin 3,9 km

Directions Hauptbahnhof – Tempodrom:  
From Invalidenstraße turn left into the Tiergartentunnel. Turn left onto Schöneberger Ufer. Continue along Tempelhofer Ufer. Turn left into Möckernstraße.

- **Bahnhof Berlin-Ostbahnhof**  
Am Ostbahnhof, 10243 Berlin 5,0 km

Directions Ostbahnhof – Tempodrom:  
From the station into Holzmarktstraße. Left across the Jannowitzbrücke onto Brückenstraße, Heinrich-Heine-Straße. at Moritzplatz 1/4 turn onto the Oranienstraße, Kochstraße, left into Wilhelmstraße, right into Anhalter Straße. Left into Stresemannstraße.  
Right into Möckernstraße.

- **Bahnhof Berlin-Zoologischer Garten**  
Hardenbergplatz, 10623 Berlin 4,9 km

From Hardenbergplatz turn left into Budapester Straße, Kurfürstenstraße. Left into Schillstraße. Right into Lützowufer, Schöneberger Ufer, Tempelhofer Ufer. Left into Möckernstraße.

### TAXI CENTRALS

Funktaxi Berlin: 0800 02 61 02 6 oder 030 26 10 26  
City Funk: 030 21 02 02  
Spreefunk: 030 44 33 22  
Würfelunk: 0800 22 22 2 55 oder 030 21 01 01  
Rufsäule am Anhalter Bahnhof: 030 26 231 47

### PARKING

- **Parkhaus Gleisdreieck**  
Schöneberger Ufer 5-9,  
10785 Berlin 0,5 km
- **Parkhaus Excelsior Haus**  
Stresemannstr. 68-76  
10963 Berlin 0,3 km

### HOTELS

- **Wyndham Grand Berlin Potsdamer Platz Hotel\*\*\*\***  
Hallesche Straße 10-14, 10963 Berlin  
Fon 030 80 10 66 0, Fax 030 80 10 66 66 0  
www.wyndhamgrandberlin.com
- **Mövenpick Hotel \*\*\*\***  
Schönebergerstraße 3, 10963 Berlin  
Fon 030 23 00 60, Fax 030 30 23 00 61 99  
www.moevenpick-berlin.com
- **Scandic Berlin \*\*\*\* am Potsdamer Platz**  
Gabrielle-Tergit-Promenade 19, 10963 Berlin  
Fon 030 700 779 0, Fax 030 700 779 2211  
www.scandichotels.com/berlin
- **Relexa Hotel Stuttgarter Hof \*\*\*\***  
Anhalterstraße 8-9, 10963 Berlin  
Fon 030 26 48 30, Fax 030 26 48 39 00  
www.relexa-hotels.de
- **NH Hotel Potsdamer Platz \*\*\***  
Stresemannstraße 47, 10963 Berlin  
Fon 030 20 62 07 33, Fax 030 22 50 71 90 0  
www.nh-hotels.com
- **Suitehotel \*\*\* am Potsdamer Platz**  
Anhalter Straße 2, 10963 Berlin  
Fon 030 20 05 60, Fax 030 20 05 62 00  
www.suite-hotel.com
- **Express by Holiday Inn \*\*\***  
Stresemannstraße 49, 10963 Berlin  
Fon 030 26 48 30, Fax 030 26 48 39 00  
www.hiexpress.de
- **Ibis Hotel \*\* am Potsdamer Platz**  
Anhalter Straße 4, 10963 Berlin  
Fon 030 26 10 50, Fax 030 26 10 52 22  
www.ibishotel.de
- **Hotel am Anhalter Bahnhof \*\***  
Stresemannstraße 36, 10963 Berlin  
Fon 030 25 80 07 0, Fax 030 25 14 89 7  
www.hotel-anhalter-bahnhof.de
- **Etap Hotel \* am Potsdamer Platz**  
Anhalter Straße 6, 10963 Berlin  
Fon 030 25 76 77 0  
www.etaphotel.com

## HOW TO FIND TEMPODROM

### ADDRESS

Tempodrom, Möckernstraße 10, 10963 Berlin  
Tel +49 (0) 30 74 73 7 - 0  
Fax +49 (0) 30-74 73 7 - 210

### CAR & LORRY

From the city Autobahn A100 towards Dresden, to exit B96-Tempelhofer Damm. Turn left onto the Tempelhofer Damm. Straight on to Mehringdamm. Turn left onto Hallesches Ufer. Second turning on the right onto Möckernstraße. Tempodrom is located approx. 200 m on the left-hand side. Access road to the stage is directly on Möckernstraße.

### Public transport

- S-Bahn: line S1/ S2/ S25/ S26 to station Anhalter Bahnhof
- U-Bahn: line U1/ U7 to Möckernbrücke station, line U2 to Mendelssohn-Bartholdy Park station
- Bus:

Bus route 129 to Anhalter Bahnhof  
Bus route 248 to Möckernstraße  
Bus route M41 to Anhalter Bahnhof

### PARKING

Only limited public parking is available in the direct vicinity of the Tempodrom. In Parkhaus Gleisdreieck multi-storey carpark (Schöneberger Ufer), only 8 minutes' walk away are over 2,000 car parking spaces available for a fee.

- 1 Tempodrom
- 2 Tiergarten
- 3 Siegestsäule
- 4 Brandenburger Tor
- 5 Potsdamer Platz
- 6 Towards Airfield Tempelhof
- 7 Autobahn access 100,103, 102
- 8 multi-storey car park Gleisdreieck
- 9 Car park Excelsiorhaus
- 10 Car park Martin-Gropius-Bau



## CONTACT PERSONS

### OPERATOR

Tempodrom  
Betriebsgesellschaft mbH & Co. KG  
Möckernstraße 10  
10963 Berlin

Fon +49 (0) 30 74 73 7 - 0  
Fax +49 (0) 30 74 73 7 - 210

E-mail [info@tempodrom.de](mailto:info@tempodrom.de)  
Internet [www.tempodrom.de](http://www.tempodrom.de)

### VENUE MANAGER

Karolin Gramsch  
Fon +49 (0) 30 74 73 7 - 213  
Fax +49 (0) 30 74 73 7 - 210  
E-Mail [karolin.gramsch@tempodrom.de](mailto:karolin.gramsch@tempodrom.de)

### COMMUNICATION, PR & MARKETING

Jessica Paul  
Fon +49 (0) 30 74 73 7 - 214  
Fax +49 (0) 30 74 73 7 - 210  
E-Mail [jessica.paul@tempodrom.de](mailto:jessica.paul@tempodrom.de)

### FINANCE

Stephanie Warnecke  
Fon +49 (0) 30 74 73 7 - 228  
Fax +49 (0) 30 74 73 7 - 210  
E-Mail [stephanie.warnecke@tempodrom.de](mailto:stephanie.warnecke@tempodrom.de)

### SALES MANAGER

#### PUBLIC EVENTS

Moritz Vasek  
Fon +49 (0) 30 74 73 7 - 215  
Fax +49 (0) 30 74 73 7 - 210  
E-Mail [moritz.vasek@tempodrom.de](mailto:moritz.vasek@tempodrom.de)

### SALES MANAGER

#### CORPORATE EVENTS

Marko Schilp  
Fon +49 (0) 30 74 73 7 - 218  
Fax +49 (0) 30 74 73 7 - 210  
E-Mail [marko.schilp@tempodrom.de](mailto:marko.schilp@tempodrom.de)

### TECHNISCHAL MANAGEMENT

Steve Thiede  
Fon +49 (0) 30 74 73 7 - 249  
Fax +49 (0) 30 74 73 7 - 250  
E-mail [steve.thiede@tempodrom.de](mailto:steve.thiede@tempodrom.de)

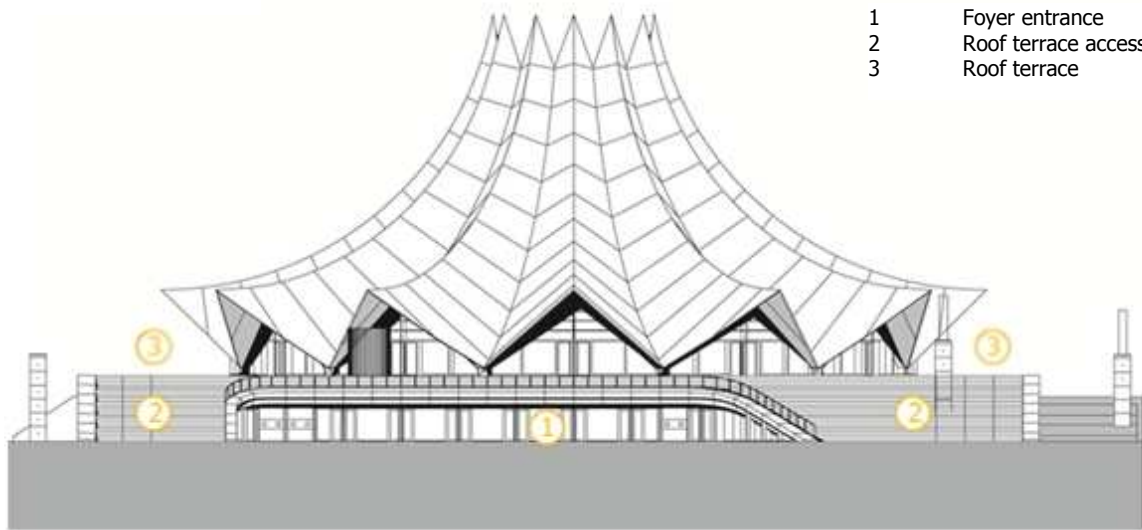
### TECHNICAL PROJECT MANAGER

Mike Groß  
Fon +49 (0) 30 74 73 7 - 248  
Fax +49 (0) 30 74 73 7 - 250  
E-mail [produktion@tempodrom.de](mailto:produktion@tempodrom.de)

### GASTRONOMY

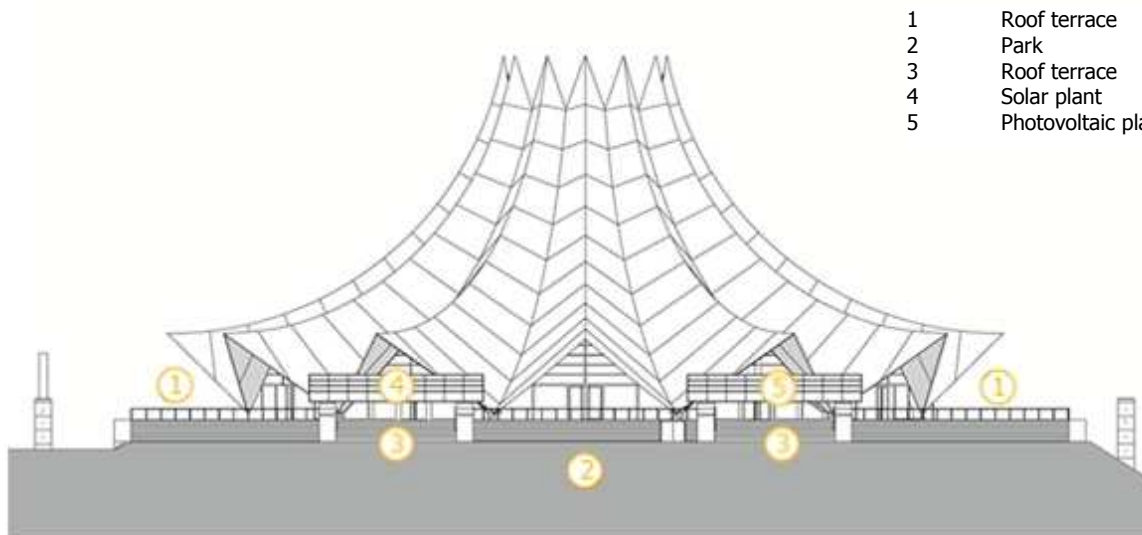
Mario Treugut  
Fon +49 (0) 30 74 73 7 - 216  
Fax +49 (0) 30 74 73 7 - 210  
E-Mail [mario.treugut@tempodrom.de](mailto:mario.treugut@tempodrom.de)

NORTH VIEW



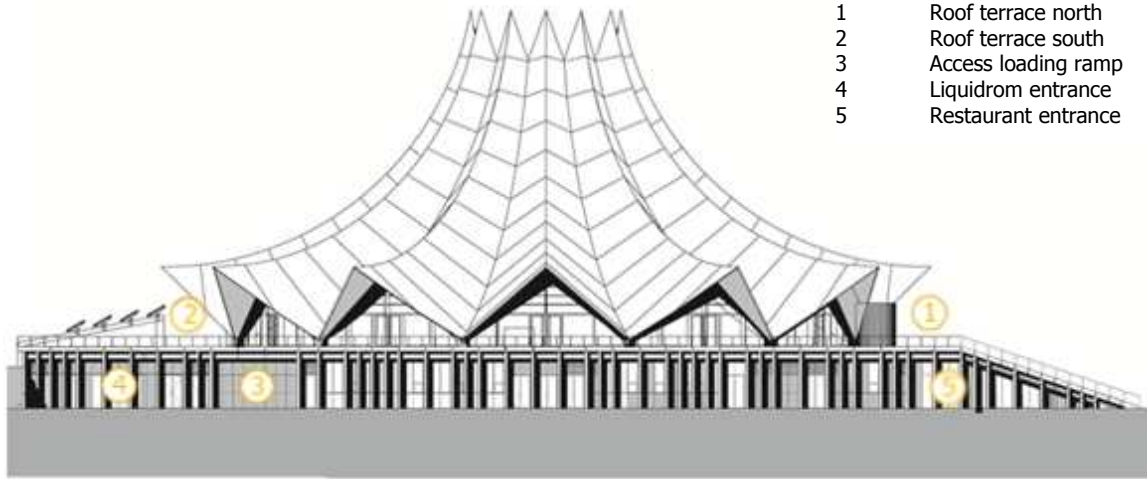
- 1 Foyer entrance
- 2 Roof terrace access
- 3 Roof terrace

SOUTH VIEW



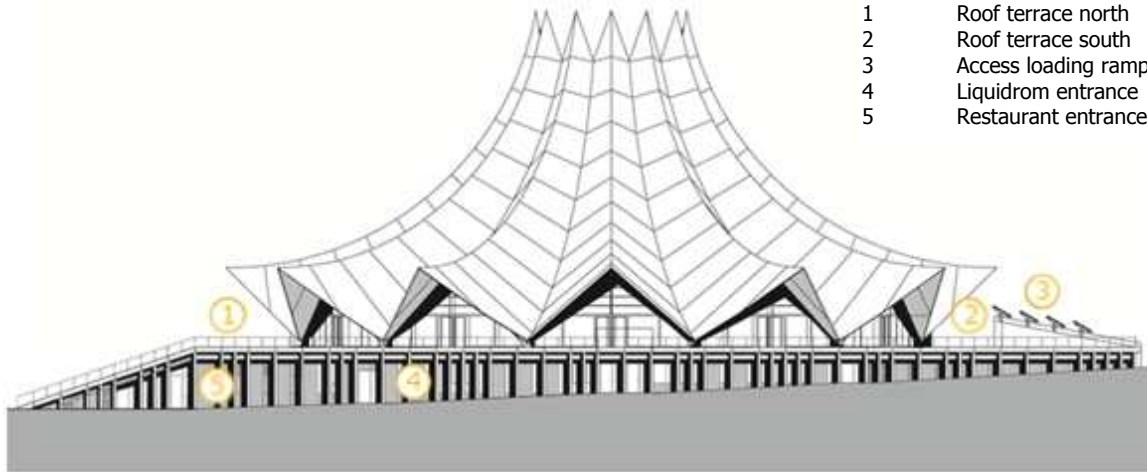
- 1 Roof terrace
- 2 Park
- 3 Roof terrace
- 4 Solar plant
- 5 Photovoltaic plant

EAST VIEW



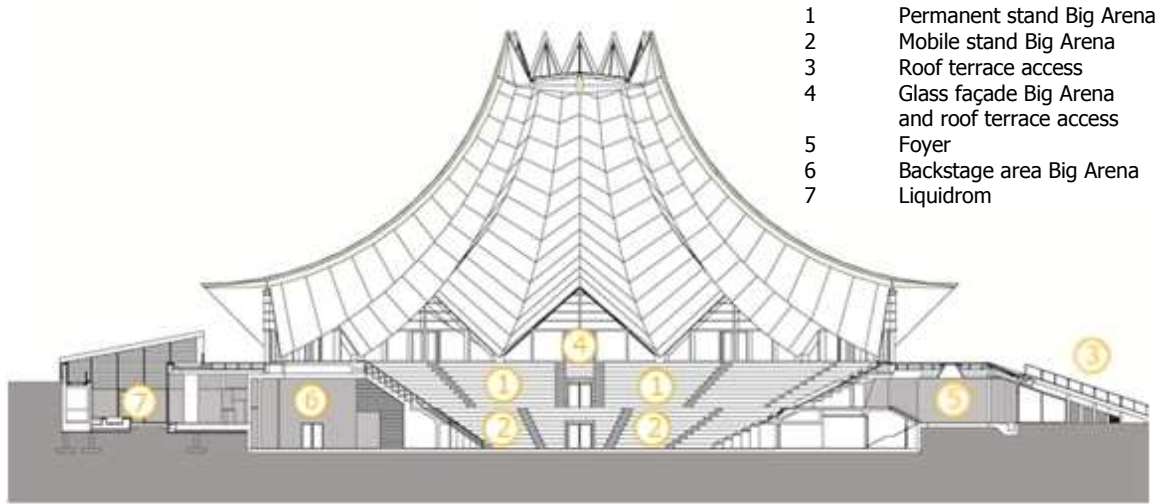
- 1 Roof terrace north
- 2 Roof terrace south
- 3 Access loading ramp
- 4 Liquidrom entrance
- 5 Restaurant entrance

WEST VIEW



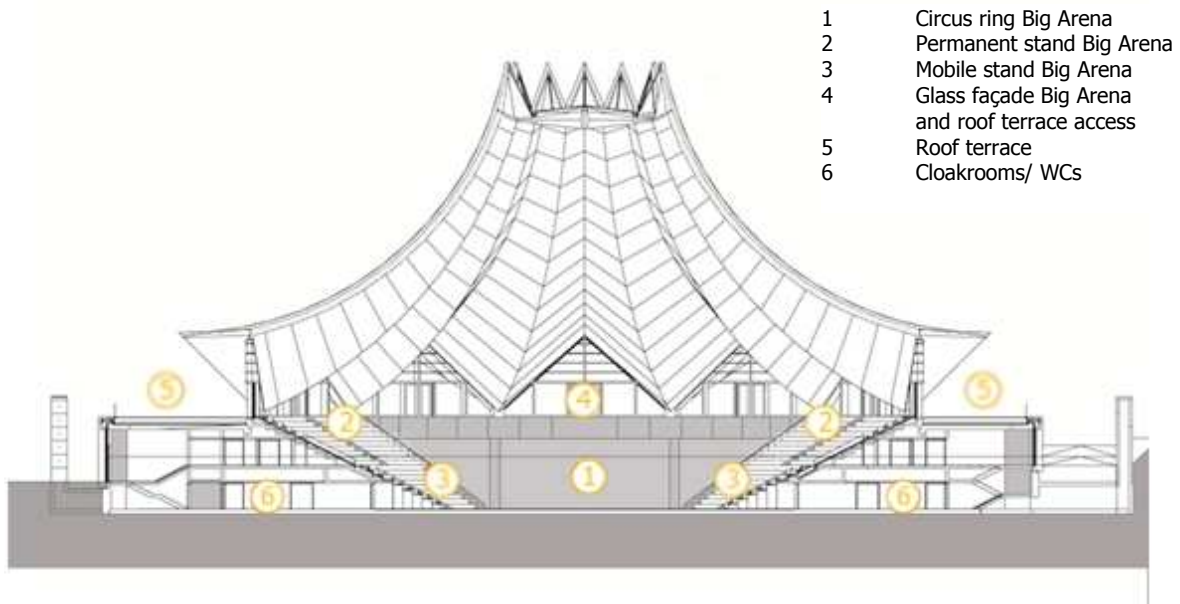
- 1 Roof terrace north
- 2 Roof terrace south
- 3 Access loading ramp
- 4 Liquidrom entrance
- 5 Restaurant entrance

SECTIONAL VIEW NORTH - SOUTH

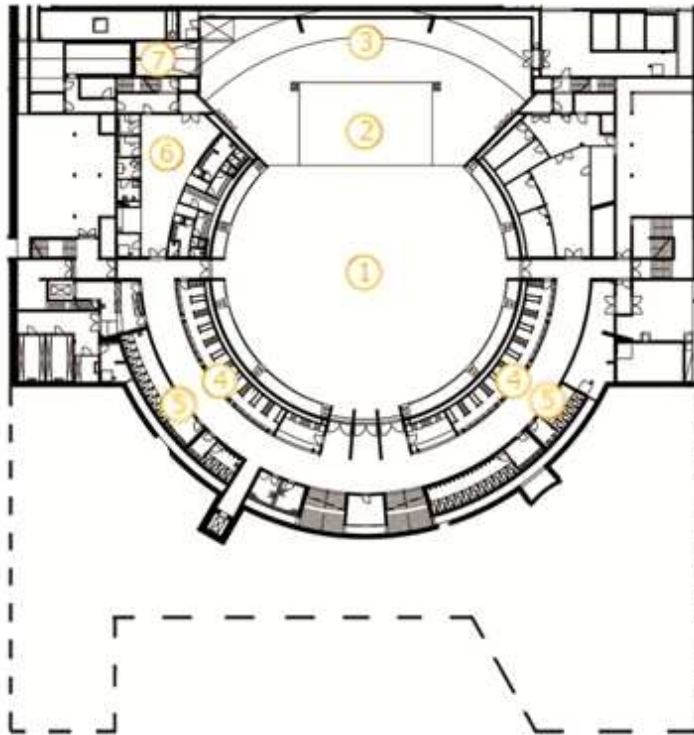


- 1 Permanent stand Big Arena
- 2 Mobile stand Big Arena
- 3 Roof terrace access
- 4 Glass façade Big Arena and roof terrace access
- 5 Foyer
- 6 Backstage area Big Arena
- 7 Liquidrom

SECTIONAL VIEW EAST - WEST

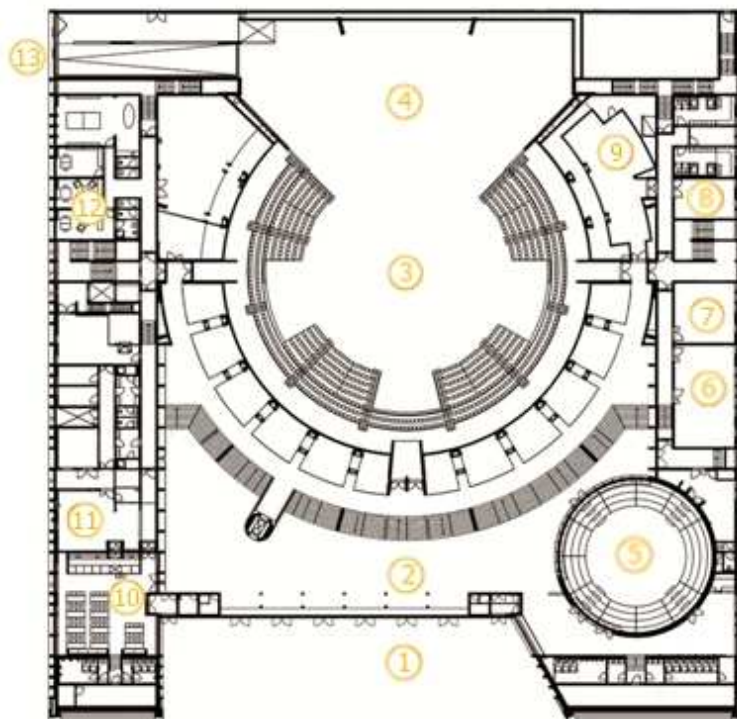


- 1 Circus ring Big Arena
- 2 Permanent stand Big Arena
- 3 Mobile stand Big Arena
- 4 Glass façade Big Arena and roof terrace access
- 5 Roof terrace
- 6 Cloakrooms/ WCs



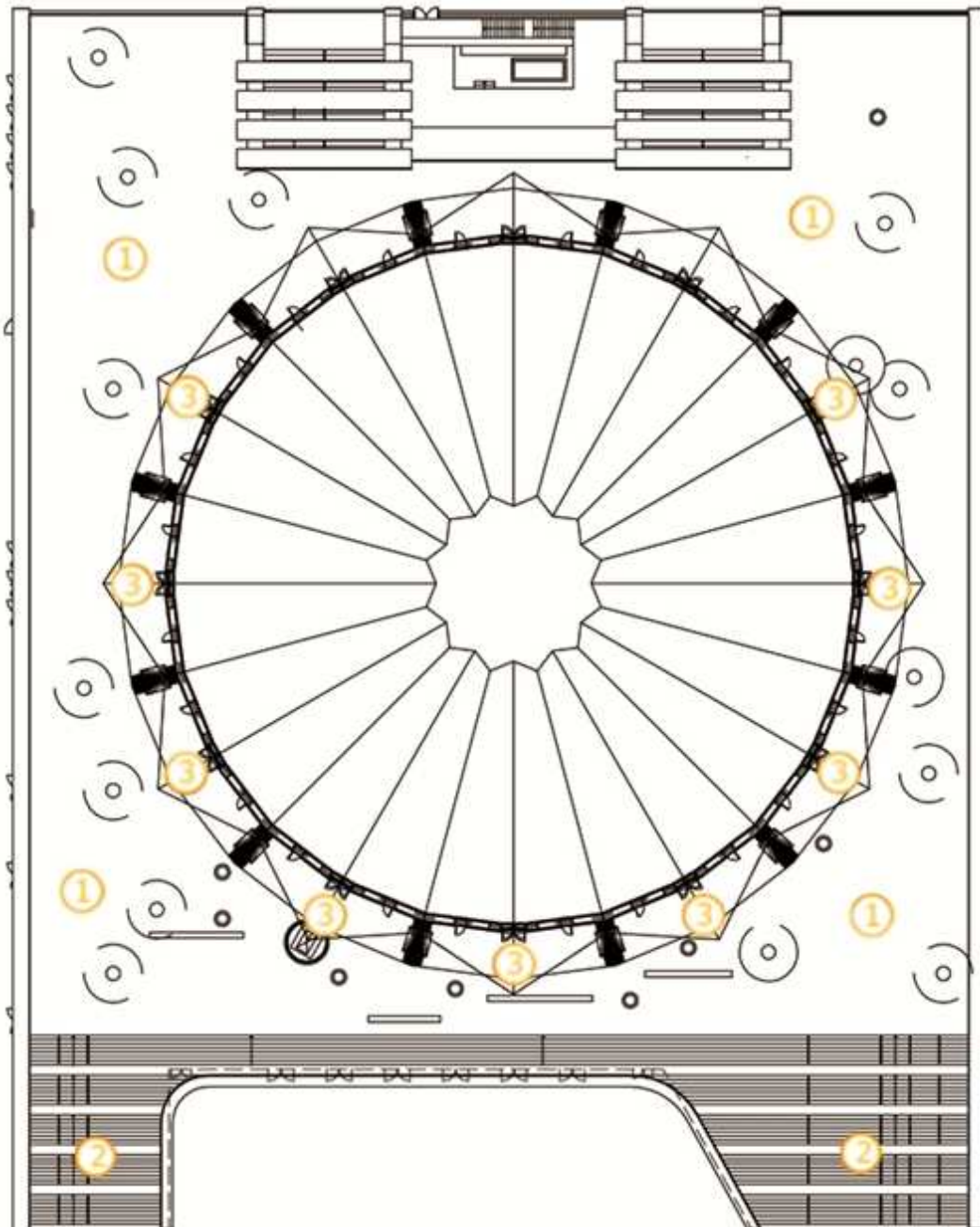
LAYOUT BASEMENT

- 1 Scene rear area
- 2 Scene area
- 3 circus ring
- 4 Cloakrooms
- 5 WCs
- 6 Backstage East
- 7 Big Arena loading ramp



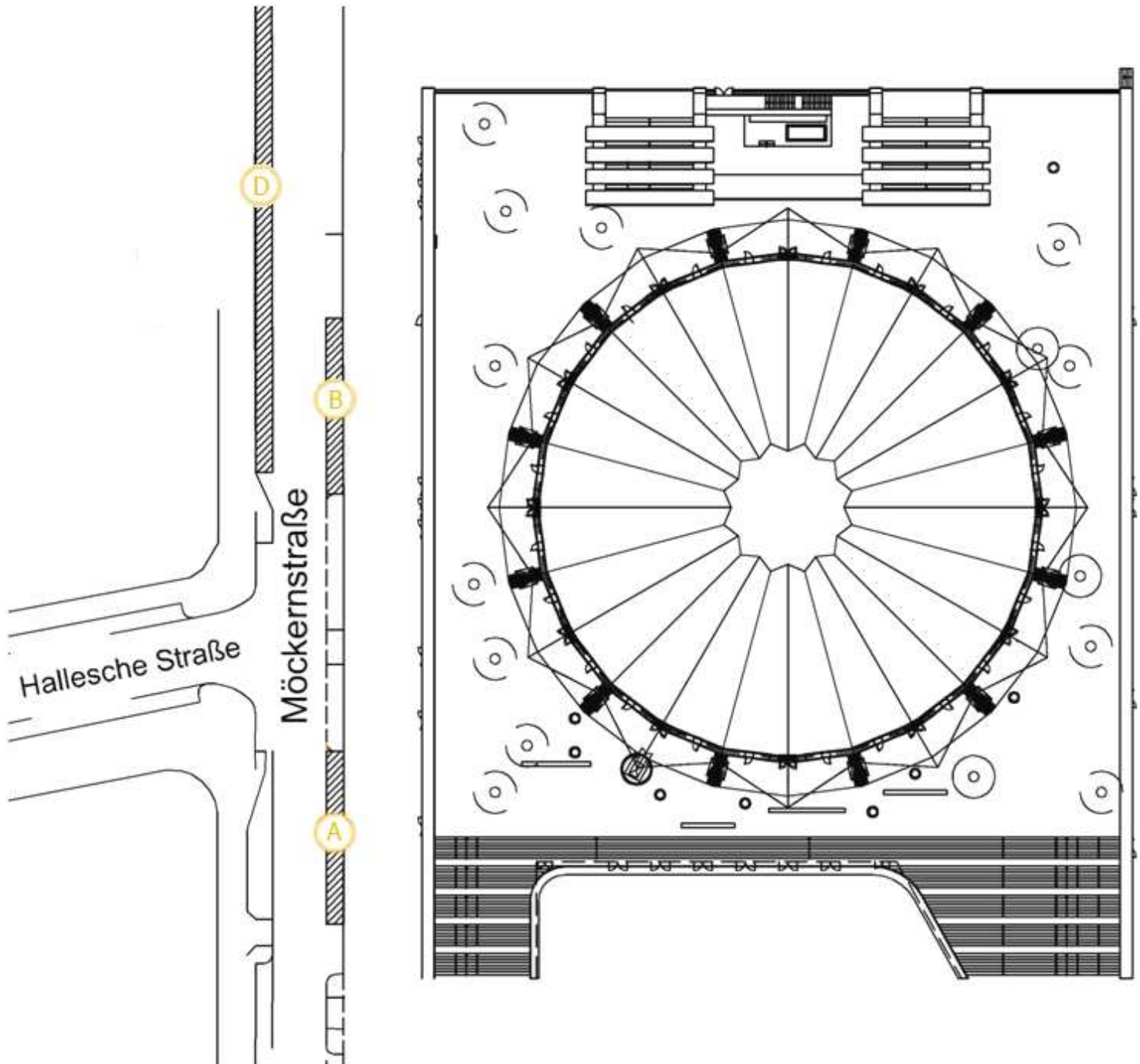
LAYOUT GROUND FLOOR

- 1 Entrance
- 2 Foyer
- 3 Big Arena
- 4 Backstage area
- 5 Small Arena
- 6 Catering
- 7 Dressing Room 2
- 8 Dressing Room 1
- 9 Lounge
- 10 Restaurant
- 11 Kitchen
- 12 Administration
- 13 Big Arena loading ramp access



LAYOUT ROOF TERRACE

- 1 Roof terrace
- 2 Outdoor stairs and roof terrace entrance
- 3 Access from Big Arena to roof terrace



#### BLOCKABLE PARKING ZONES

- A Parking zone A ca. 20 m
- B Parking zone B ca. 20 m
- D Parking zone D ca. 70 m