

HOTEL KRONE  UNTERSTRASS
ZÜRICH



DAY RATES AND ROOM HIRE

The perfect option for every business event



WELCOME

The right room for your occasion

Our 7 air-conditioned seminar rooms – all with natural light – are fitted with state-of-the-art technical equipment.

Thanks to soundproofed dividing walls, the larger rooms can be tailored to your needs – allowing a perfectly customized layout. Whether you're planning a small workshop, a seminar with 40 people or a conference for 200 people, we have the perfect room for you.















Our day rates help you keep your budget under control. You choose your perfect option and we'll do the rest, allowing you to devote your full attention to the content of your seminar day.

If you prefer a made-to-measure solution, you can hire a room and order your desired services and culinary "add-ons" completely in line with your wishes. When it comes to the catering, we take care to provide light, wholesome cuisine and you decide whether you'd prefer a simple sandwich, a sophisticated standing lunch or a business lunch of many courses – (almost) everything is possible.



DAY RATES

The perfect package to get off the ground

	Charter	Economy	Economy Plus	Premium	First
For whom?	You want quick, simple solutions and only need a little energy to give you a boost.	The perfect proposal with a speedy lunch break for crafty number-crunchers with straightforward requirements.	When you just want to concentrate on work and so appreciate attentive support and a sufficient supply of power.	That's how to organize meetings: everything useful is there, but without oversaturation and waiting times.	Your all-round, worry-free package with comprehensive service, including wine with the meal at lunchtime and a drink to finish with.
How does it work?	The coffee machine is in the room. Croissants with the morning option (9 a.m. – 12 noon), mini sandwiches in the afternoon (2 p.m. – 5 p.m.). For a maximum of 12 people.	Simple, fair and affordable. Things move quickly at lunchtime, hence the day is over by 5 p.m. at the latest.	Everything you need is there, including a light and – on request – quick lunch.	Our tried-and-tested package rate for (almost) every case.	Full service and support for the entire day, adapted to your needs.
 Seminar room with natural light and air conditioning, suitable for the number of people, including your desired seating	👑	👑	👑	👑	👑
 Projector/screen/flat screen	👑	👑	👑	👑	👑
 Pin board with pins, flip chart with pens, presentation kit, pad of paper and ballpoint pen for each guest				👑	👑
 WLAN access	👑	👑	👑	👑	👑
 Mineral water in the room, replenished in the breaks	👑	👑	👑	👑	👑
 Coffee and croissants/mini sandwich on arrival	👑			👑	👑
 Breaktime buffet in the morning break and/or afternoon "MEDIUM"		👑👑	👑👑		
 Breaktime buffet in the morning and/or afternoon "BRAINPOWER"				👑👑	👑👑
 Lunchtime catering with "Fast Sandwich Lunch" (in the room)		👑			
 2-course business lunch in the restaurant (or a standing lunch, from 30 people)			👑		
 3-course business lunch (meat/fish/vegetarian)				👑	👑
 Table beverages and coffee/tea with lunch				👑	👑
 Wine accompaniment: 1 glass of white or red wine with lunch					👑
 Reason to raise a toast: 1 glass of prosecco or white wine to finish off					👑
Per person	-	80.-	95.-	115.-	135.-
Half-day version	45.-	60.-	70.-	90.-	100.-
Weekend/Public holidays	40.-	60.-	70.-	90.-	100.-



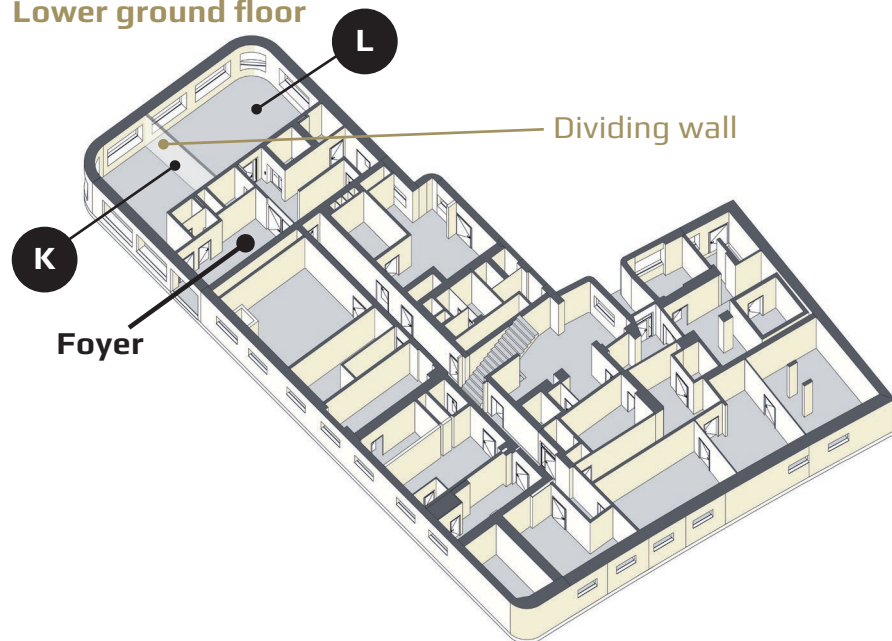
ROOM HIRE

The right size at the right price

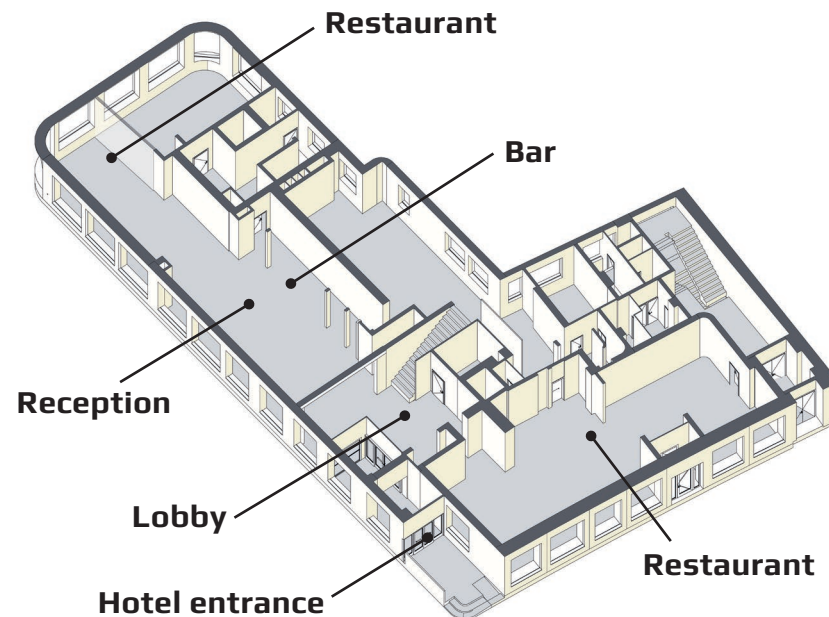
Our seminar rooms can also be hired without benefiting from the day rates. You can thus design your day and the culinary catering of your participants completely according to your wishes. Ask us about our packages: whether it's coffee during the break, a sandwich, standing lunch or a business lunch – we are happy to make it possible for you.

Thanks to the soundproofed dividing walls, the rooms can be adjusted to the required size, and the type of seating can be chosen. All rooms have air conditioning, natural light and up-to-date seminar equipment.

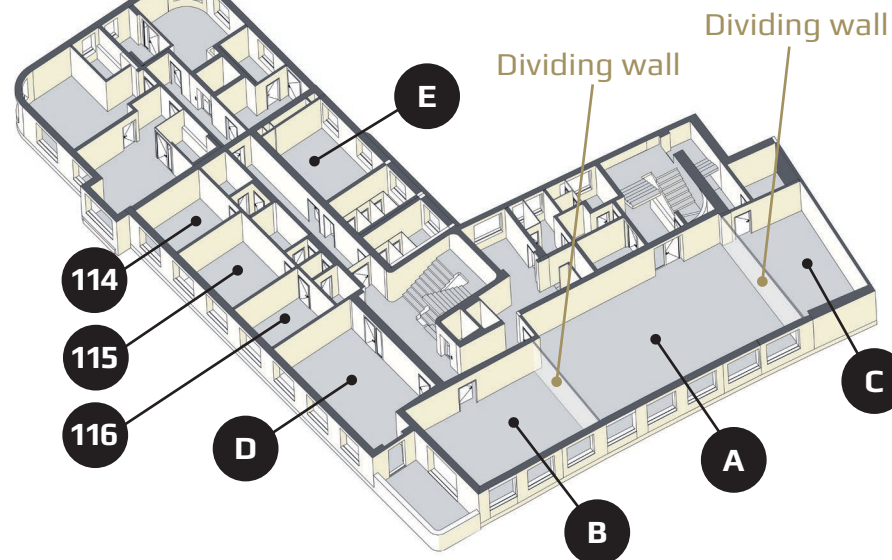
Lower ground floor



Ground floor

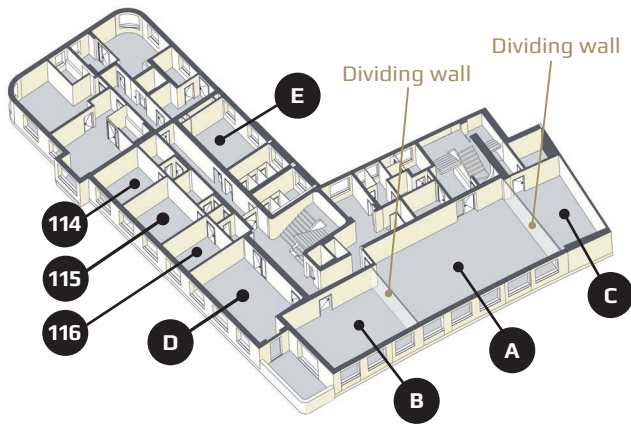


First floor

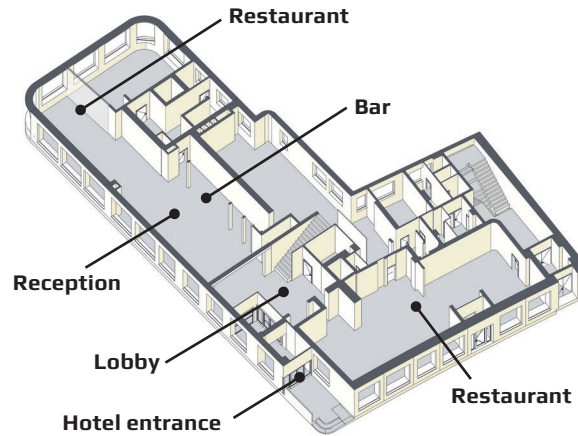


ROOM HIRE

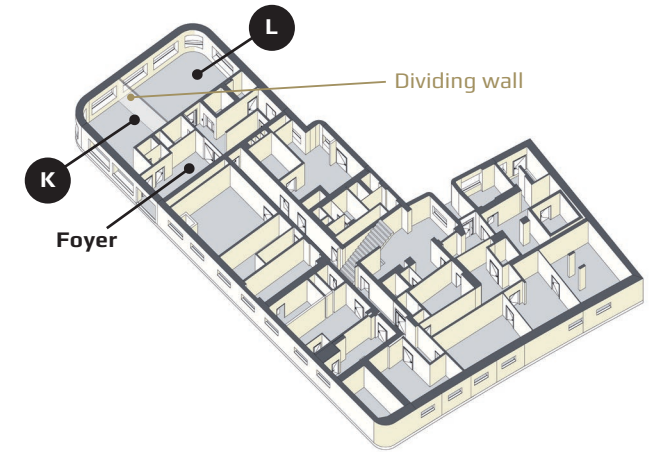
First floor



Ground floor



Lower ground floor



	A+B+C	A+B	A+C	A	B	C	D	E	114 115 116	K+L	K	L
Size	180 m ²	145 m ²	131 m ²	97 m ²	48 m ²	34 m ²	41 m ²	20 m ²	10 m ²	60 m ²	23 m ²	37 m ²
L x B (m)	24.20 x 7.80	20.20 x 7.80	16.40 x 7.80	12.40 x 7.80	7.80 x 6.10	7.80 x 4.00	5.40 x 7.30	5.20 x 3.60	ca. 3.00 x 3.50	11.5 x 5.10	4.50 x 5.10	7.00 x 5.10
Mornings until 12.00 noon	from 1250.-	from 1050.-	from 950.-	from 700.-	from 450.-	from 250.-	from 350.-	from 300.-	from 150.-	from 550.-	from 250.-	from 350.-
Afternoons 12.30-5.30 p.m.	from 1250.-	from 1050.-	from 950.-	from 700.-	from 450.-	from 250.-	from 350.-	from 300.-	from 150.-	from 550.-	from 250.-	from 350.-
Evenings* from 6.00 p.m.	from 850.-	from 700.-	from 600.-	from 550.-	from 350.-	from 250.-	from 350.-	from 250.-	-	from 550.-	from 250.-	from 300.-
from 6.45 p.m.	from 500.-	from 400.-	from 350.-	from 300.-	from 250.-	from 150.-	from 200.-	from 150.-	-	from 350.-	from 150.-	from 250.-
Full day until 5.30 p.m.	from 2000.-	from 1800.-	from 1500.-	from 1200.-	from 750.-	from 400.-	from 600.-	from 500.-	from 200.-	from 990.-	from 450.-	from 600.-
Surcharge 24 h	+ 300.-	+ 300.-	+ 300.-	+ 200.-	+ 200.-	+ 100.-	+ 100.-	+ 100.-	+ 50.-	+ 250.-	+ 100.-	+ 150.-

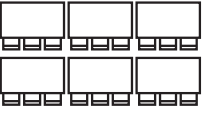
* Events requiring a greater amount preparation (e.g. special seating) will incur an additional charge (CHF 45.00 per employee per hour).

All rooms have natural light and a high-performance air-conditioning system. Room hire includes use of the installed technical equipment, suitable seating and statutory VAT. All prices in CHF.


HALL AND SEATING PLANS

From 0 to 180 in one building


SEMINAR

	A+B+C	A+B	A+C	A	B	C	D	E	114, 115, 116	K+L	K	L
	180 m ²	145 m ²	131 m ²	97 m ²	48 m ²	34 m ²	41 m ²	20 m ²	10 m ² each	60 m ²	23 m ²	37 m ²
	90 people	80 people	60 people	55 people	24 people	12 people	15 people	-	-	30 people.	10 people	16 people

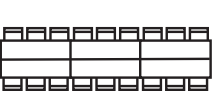
THEATRE

	A+B+C	A+B	A+C	A	B	C	D	E	114, 115, 116	K+L	K	L
	180 m ²	145 m ²	131 m ²	97 m ²	48 m ²	34 m ²	41 m ²	20 m ²	10 m ² each	60 m ²	23 m ²	37 m ²
	200 people	160 people	120 people	100 people	40 people	20 people	30 people	-	10 people	50 people	16 people	36 people

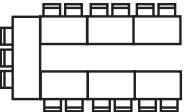
ASSEMBLY

	A+B+C	A+B	A+C	A	B	C	D	E	114, 115, 116	K+L	K	L
	180 m ²	145 m ²	131 m ²	97 m ²	48 m ²	34 m ²	41 m ²	20 m ²	10 m ² each	60 m ²	23 m ²	37 m ²
	160 people	150 people	110 people	90 people	40 people	20 people	24 people	-	-	50 people	16 people	30 people


LONG ROWS TABLE

	A+B+C	A+B	A+C	A	B	C	D	E	114, 115, 116	K+L	K	L
	180 m ²	145 m ²	131 m ²	97 m ²	48 m ²	34 m ²	41 m ²	20 m ²	10 m ² each	60 m ²	23 m ²	37 m ²
	-	-	-	40 people	24 people	16 people	20 people	8 people	4 - 6 people	24 people	12 people	8 people

U-SHAPED

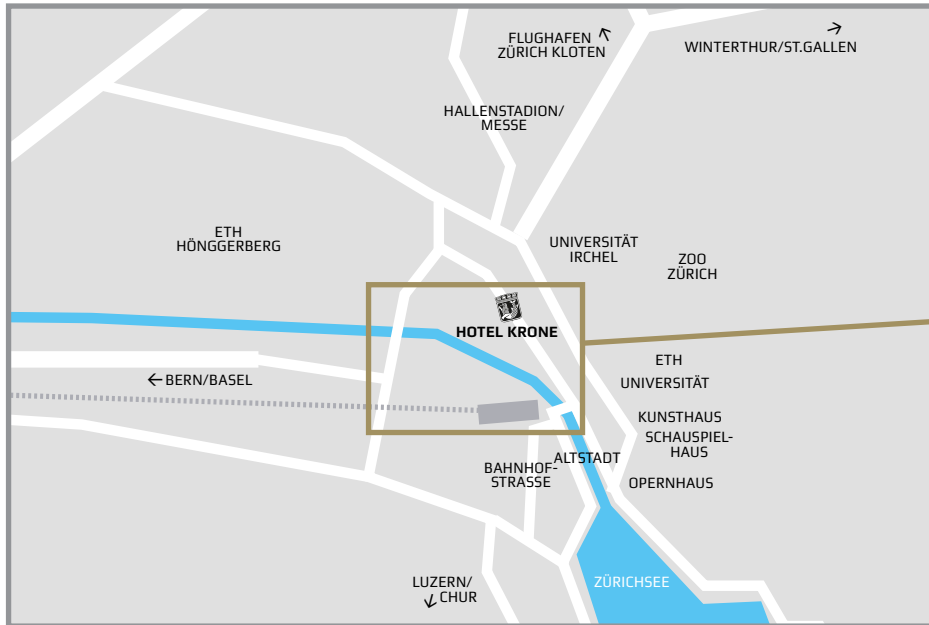
	A+B+C	A+B	A+C	A	B	C	D	E	114, 115, 116	K+L	K	L
	180 m ²	145 m ²	131 m ²	97 m ²	48 m ²	34 m ²	41 m ²	20 m ²	10 m ² each	60 m ²	23 m ²	37 m ²
	-	-	-	38 people	22 people	10 people	16 people	-	-	26 people	10 people	14 people

BANQUET

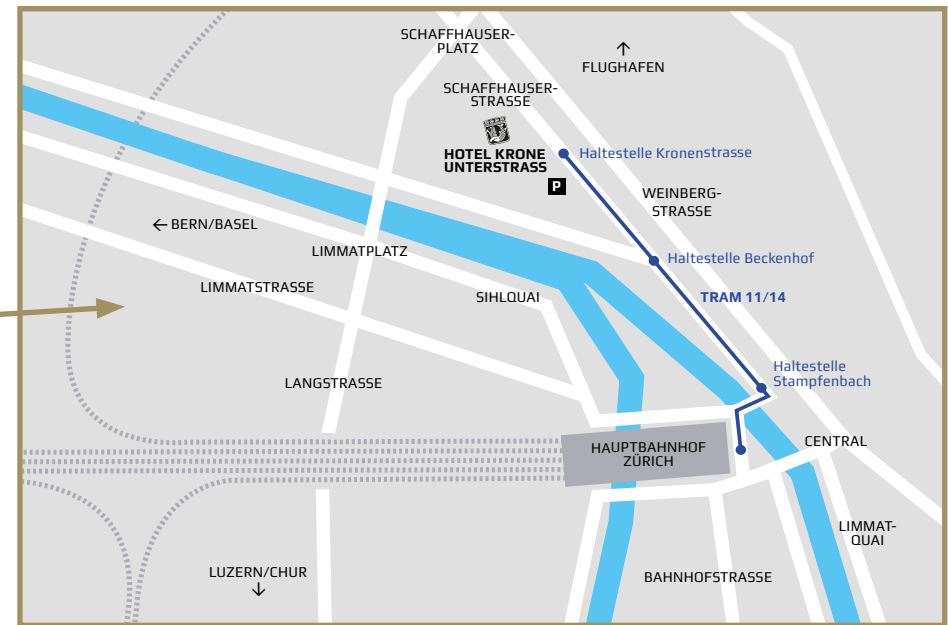
	A+B+C	A+B	A+C	A	B	C	D	E	114, 115, 116	K+L	K	L
	180 m ²	145 m ²	131 m ²	97 m ²	48 m ²	34 m ²	41 m ²	20 m ²	10 m ² each	60 m ²	23 m ²	37 m ²
	120 people	100 people	70 people	60 people	30 people	-	20 people	-	-	-	-	-

LOCATED IN THE HEART OF THE CITY

Exploring the city by tram or on foot



The Hotel Krone Unterstrass is in a superb central location in the city. The main station, conference center, exhibition center and Hallenstadion arena, university and ETH Zurich, Bahnhofstrasse shopping area, old town and Lake Zurich can be reached in no time on foot or by tram. The No.11 and No.14 tram lines stop right in front of the hotel ("Kronenstrasse" stop).



You can get to Zurich Kloten airport by tram or via the main station by train in approximately 20 minutes.

If you are travelling by car, you can use the nearby Stampfenbach car park, which usually has sufficient parking spaces available.

HOTEL KRONE UNTERSTRASS

ZÜRICH

Schaffhauserstrasse 1, CH-8006 Zürich
Tel +41 (0)44 360 56 56
Fax +41 (0)44 360 56 00
www.hotel-krone.ch, info@hotel-krone.ch

4*city hotel. 80 air-conditioned hotel rooms
2 restaurants and the "different" bar
7 seminar and banqueting rooms for up to 200 people
Central, city location. Its own parking spaces



A Wüger Gastronomie AG company